

KNOXVILLE, TENNESSEE

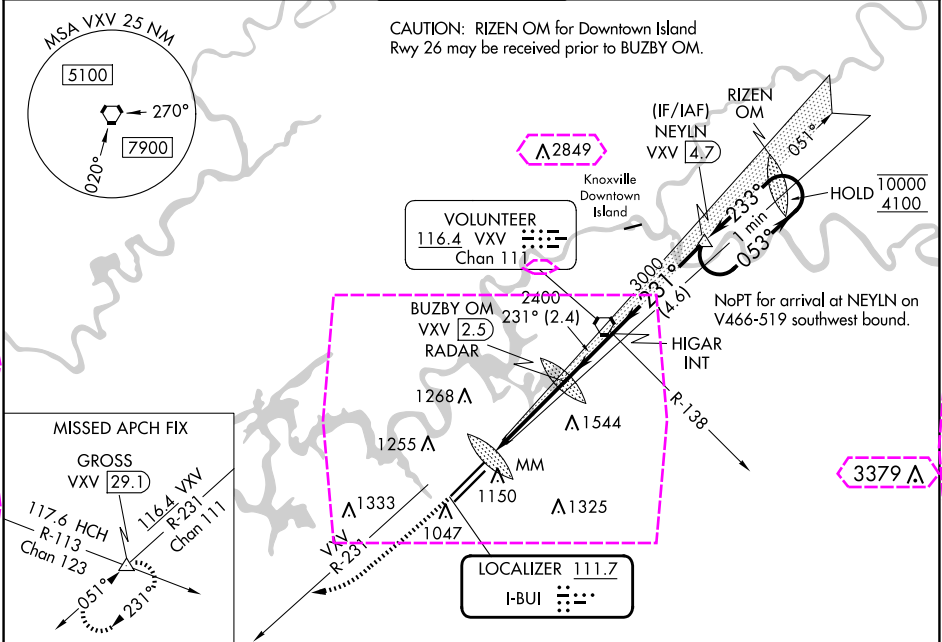
AL-218 (FAA)

24249

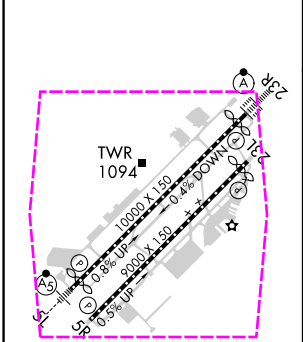
LOC I-BUI 111.7	APP CRS 231°	Rwy Idg 9495 TDZE 984 Apt Elev 986
---------------------------	------------------------	---

ILS RWY 23R (CAT II)
MC GHEE TYSON (TYS)

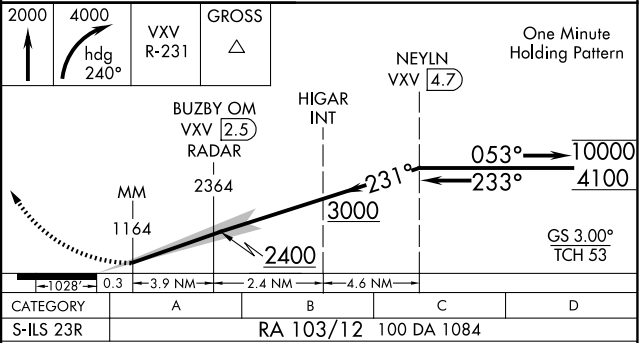
DME or RADAR required.		ALS F-2 	MISSED APPROACH: Climb to 2000 then climbing right turn to 4000 on heading 240° and VXV VORTAC R-231 to GROSS INT/VXV 29.1 DME and hold.	
ATIS 128.35	KNOXVILLE APP CON 123.9 360.8	KNOXVILLE TOWER 121.2 257.8	GND CON 121.9 348.6	CLNC DEL 121.65



ELEV 986	D	TDZE 984
-----------------	----------	-----------------



HIRL Rwy 5L-23R and 5R-23L
REIL Rwy 5R and 23L
TDZ/CL Rwy 5R and 23R



CATEGORY	A	B	C	D
S-ILS 23R	RA 103/12 100 DA 1084			

CATEGORY II ILS - SPECIAL AIRCREW & AIRCRAFT CERTIFICATION REQUIRED

KNOXVILLE, TENNESSEE
Amdt 14B 19MAY22

35°49'N-84°00'W

MC GHEE TYSON (TYS)
ILS RWY 23R (CAT II)

KNOXVILLE, TENNESSEE

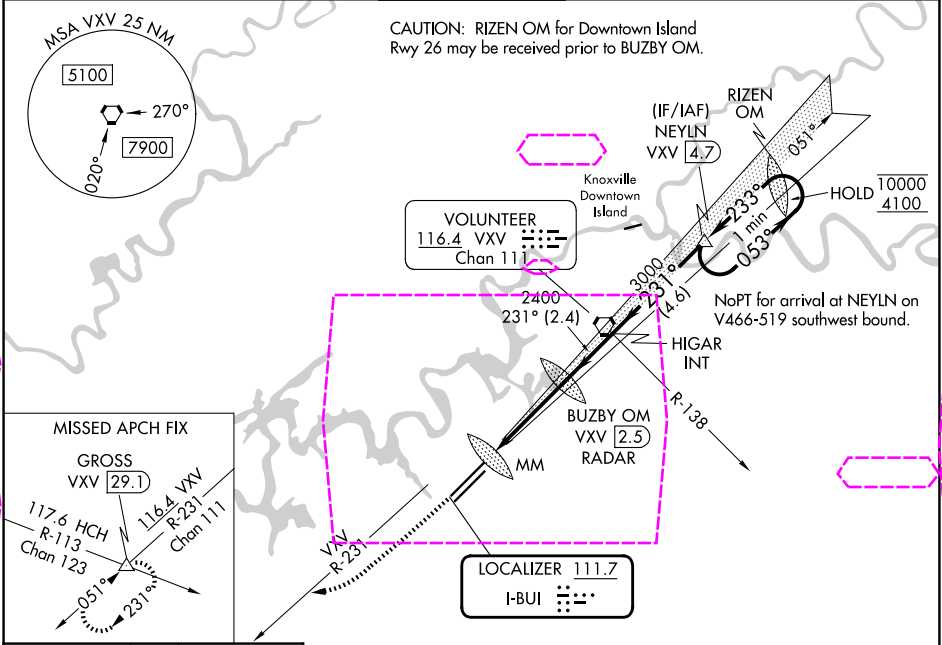
AL-218 (FAA)

25219

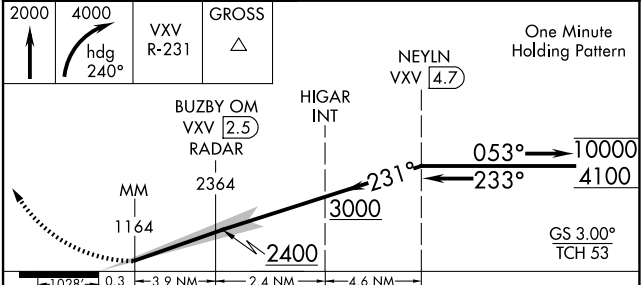
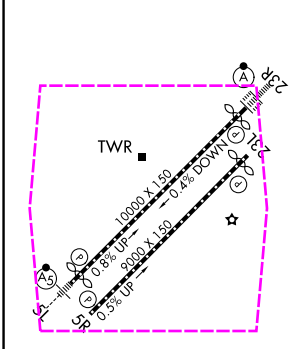
LOC I-BUI 111.7	APP CRS 231°	Rwy Ldg TDZE Apt Elev	9495 984 986
---------------------------	------------------------	-----------------------------	---

ILS RWY 23R (CAT II)
MC GHEE TYSON (TYS)

DME or RADAR required.		ALS F-2	MISSED APPROACH: Climb to 2000 then climbing right turn to 4000 on heading 240° and VXV VORTAC R-231 to GROSS INT/VXV 29.1 DME and hold.	
ATIS 128.35	KNOXVILLE APP CON 123.9 360.8	KNOXVILLE TOWER 121.2 257.8	GND CON 121.9 348.6	CLNC DEL 121.65



ELEV 986	D	TDZE 984
----------	---	----------



CATEGORY	A	B	C	D
S-ILS 23R	RA 103/12 100 DA 1084			

CATEGORY II ILS - SPECIAL AIRCREW & AIRCRAFT CERTIFICATION REQUIRED

KNOXVILLE, TENNESSEE
Amdt 14B 19MAY22

35°49'N-84°00'W

MC GHEE TYSON (TYS)
ILS RWY 23R (CAT II)

SE-1, 07 AUG 2025 to 04 SEP 2025

SE-1, 07 AUG 2025 to 04 SEP 2025