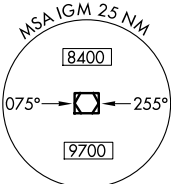


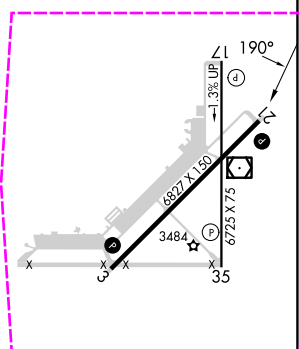
VOR/DME RWY 21
KINGMAN (IGM)

Circling Rwy 35 NA at night.

MISSED APPROACH: Climbing right turn to 6000 via IGM VOR/DME R-208 then climbing right turn to 9000 direct IGM VOR/DME and hold.

UNICOM
122.8 (CTAF) **L**

SW-4, 10 JUL 2025 to 07 AUG 2025



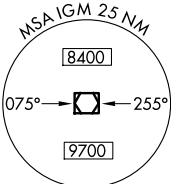
MIRL Rwy 3-21 and 17-35 **L**
REIL Rwy 3 and 21 **L**

KINGMAN (IGM)
VOR/DME RWY 21

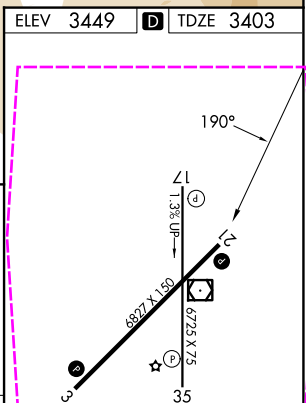
VOR/DME RWY 21
KINGMAN (IGM)

Circling Rwy 35 NA at night.

MISSED APPROACH: Climbing right turn to 6000 via IGM VOR/DME R-208 then climbing right turn to 9000 direct IGM VOR/DME and hold.

UNICOM
122.8 (CTAF) **L**

SW-4, 07 AUG 2025 to 04 SEP 2025



MIRL Rwy 3-21 and 17-35 **L**
REIL Rwy 3 and 21 **L**

KINGMAN (IGM)
VOR/DME RWY 21