

KINGMAN, ARIZONA

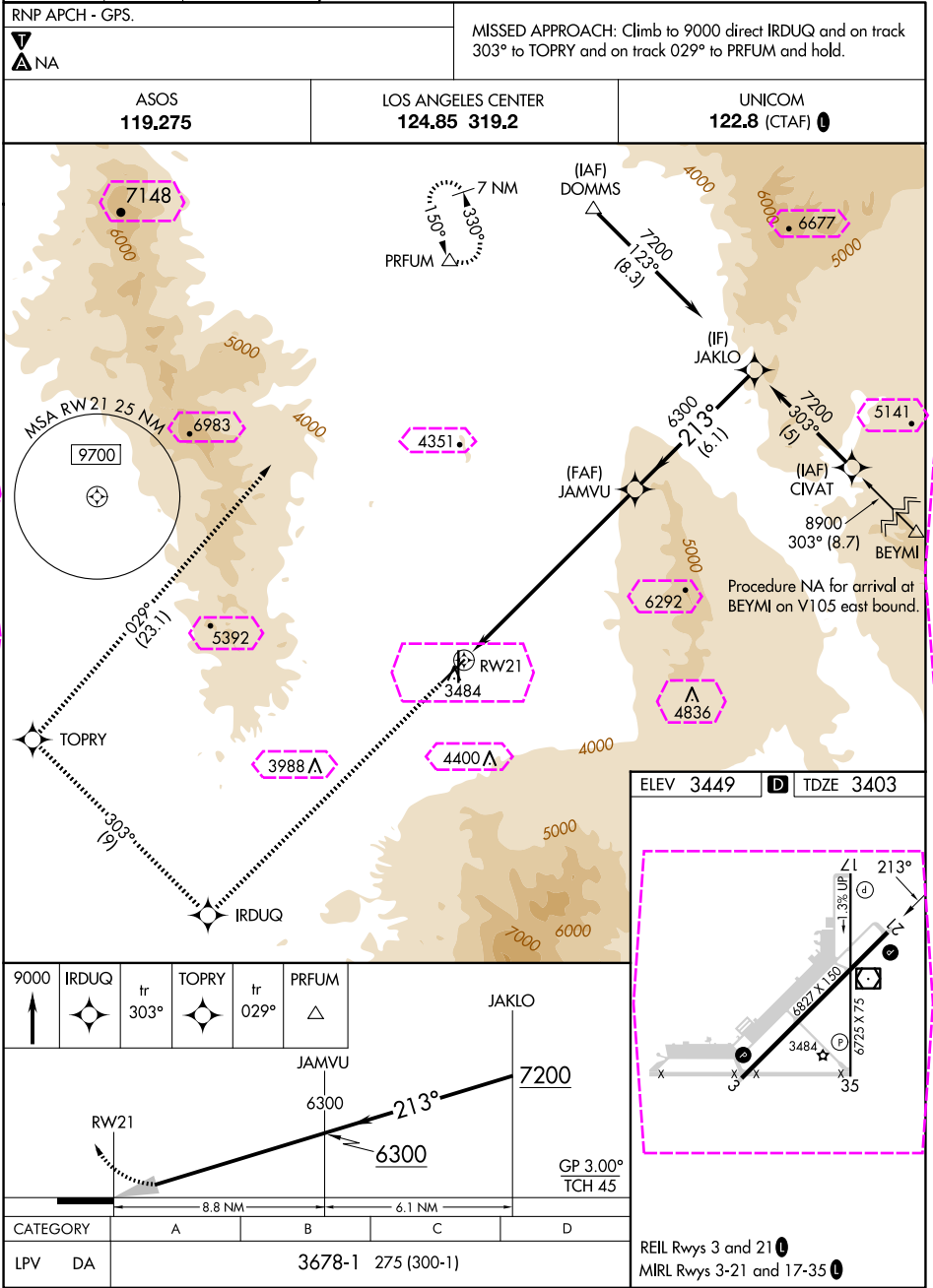
AL-215 (FAA)

24361

WAAS CH 70612 W21A	APP CRS 213°	Rwy Idg 6827 TDZE 3403 Apt Elev 3449
--	------------------------	---

RNAV (GPS) Z RWY 21

KINGMAN (IGM)



KINGMAN, ARIZONA

Orig-D 26DEC24

35°16'N-113°56'W

KINGMAN (IGM)

RNAV (GPS) Z RWY 21

KINGMAN, ARIZONA

AL-215 (FAA)

25219

WAAS CH 70612 W21A	APP CRS 213°	Rwy Ldg TDZE Apt Elev	6827 3403 3449
--	------------------------	-----------------------------	---

RNAV (GPS) Z RWY 21
KINGMAN (IGM)

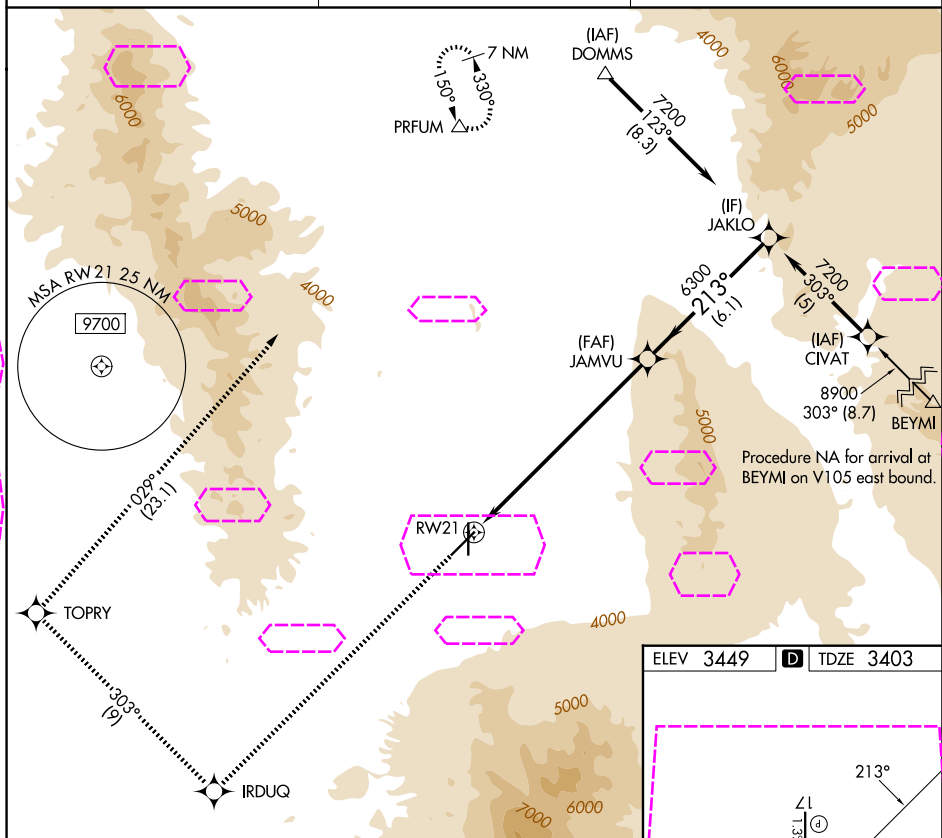
RNP APCH - GPS.

ANA

MISSED APPROACH: Climb to 9000 direct IRDUQ and on track 303° to TOPRY and on track 029° to PRFUM and hold.

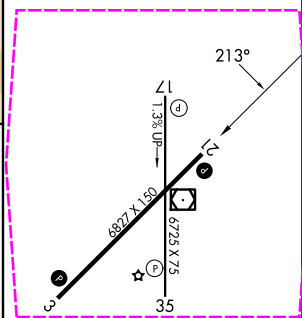
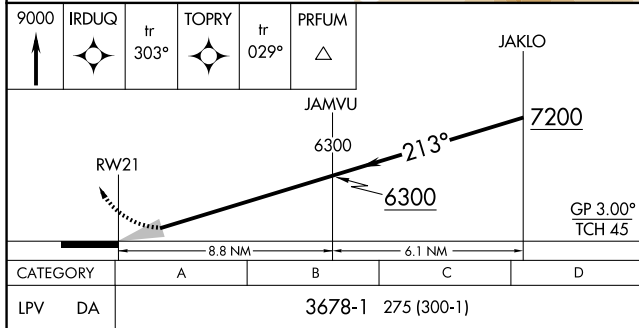
ASOS
119.275

LOS ANGELES CENTER
124.85 319.2

UNICOM
122.8 (CTAF) **L**

Procedure NA for arrival at
BEYMI on V105 east bound.

ELEV 3449	D	TDZE 3403
-----------	----------	-----------



REIL Rwys 3 and 21 **L**
MIRL Rwys 3-21 and 17-35 **L**

KINGMAN, ARIZONA
Orig-D 26DEC24

35°16'N-113°56'W

KINGMAN (IGM)

RNAV (GPS) Z RWY 21

SW-4, 07 AUG 2025 to 04 SEP 2025

SW-4, 07 AUG 2025 to 04 SEP 2025