

KINGMAN, ARIZONA

AL-215 (FAA)

24361

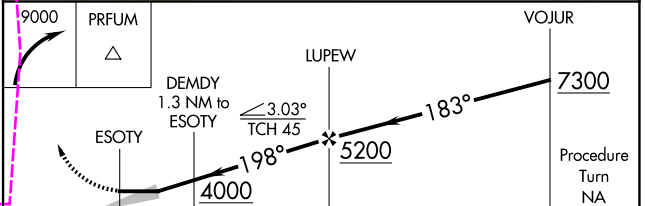
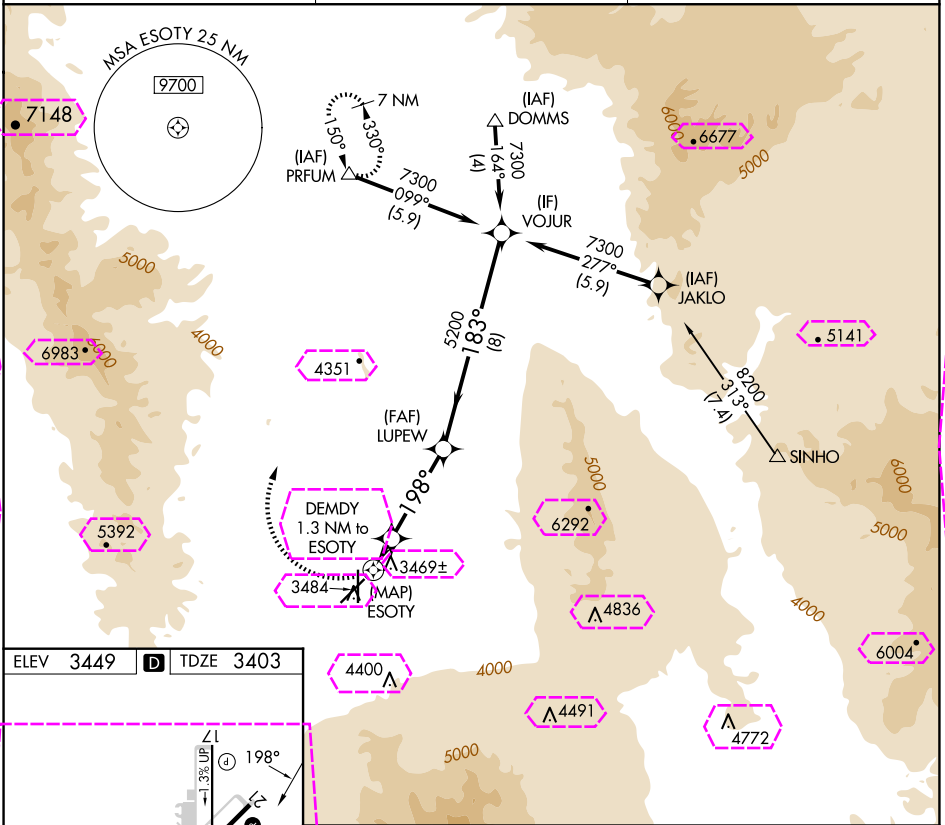
APP CRS	Rwy Idg	6827
198°	TDZE	3403
	Apt Elev	3449

# RNAV (GPS) Y RWY 21

KINGMAN (IGM)

<p><b>A</b> DME/DME RNP-0.3 NA. Circling NA for Cat D southeast of Rwy 3-21. Circling Rwy 35 NA at night.</p>	<p>MISSED APPROACH: Climbing right turn to 9000 direct PRFUM and hold, continue climb-in-hold to 9000.</p>
---	--

ASOS 119.275	LOS ANGELES CENTER 124.85 319.2	UNICOM 122.8 (CTAF) <b>0</b>
-----------------	------------------------------------	---------------------------------



REIL Rwy 3 and 21 0 MIRL Rwy 3-21 and 17-35 0	<div><div></div>0.5</div> <div><div></div>1.3 NM</div> <div><div></div>3.7 NM</div> <div><div></div>8 NM</div>					
	CATEGORY	A		B	C	D
	LNAV MDA	3820-1		417 (400-1)	3820-1¼	417 (400-1¼)
	CIRCLING	3980-1 531 (600-1)		4100-1 651 (700-1)	4420-3	971 (1000-3)

KINGMAN, ARIZONA

Orig-C 20MAY21

35°16'N-113°56'W

KINGMAN (IGM)

# RNAV (GPS) Y RWY 21

SW-4, 10 JUL 2025 to 07 AUG 2025

SW-4, 10 JUL 2025 to 07 AUG 2025

KINGMAN, ARIZONA

AL-215 (FAA)

25219

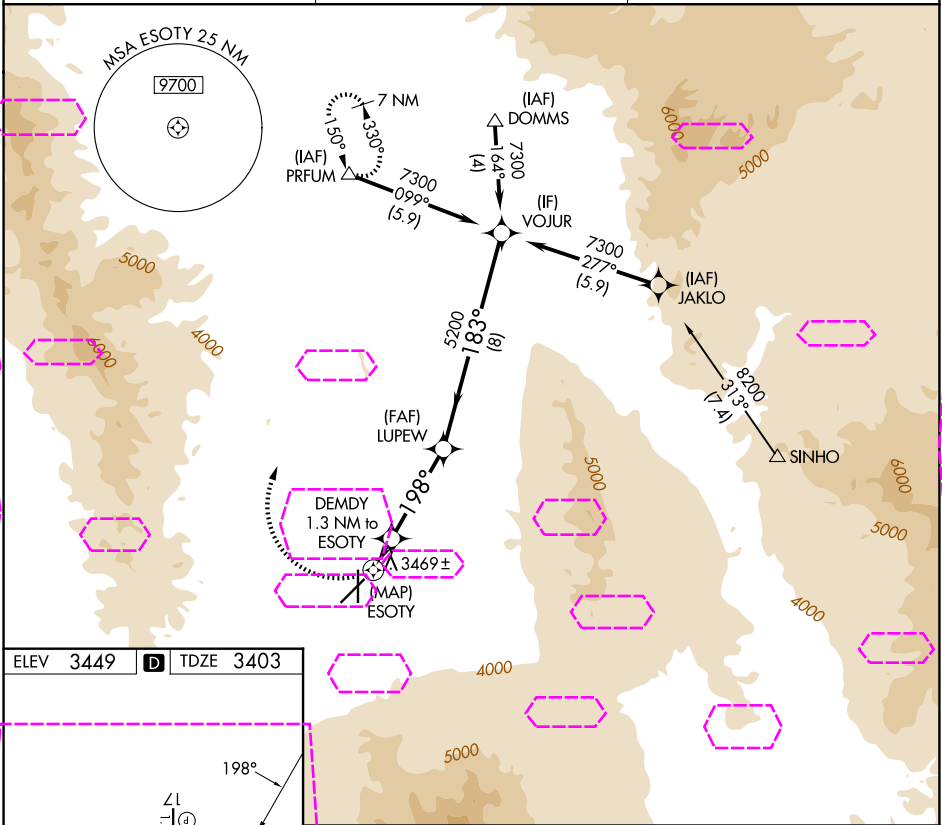
APP CRS <b>198°</b>	Rwy Ldg <b>6827</b>
	TDZE <b>3403</b>
	Apt Elev <b>3449</b>

# RNAV (GPS) Y RWY 21

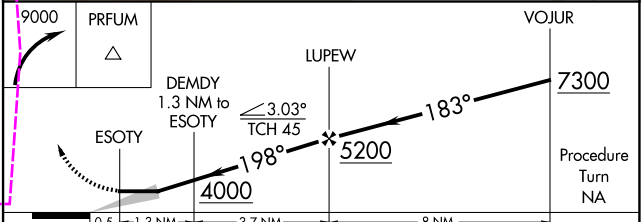
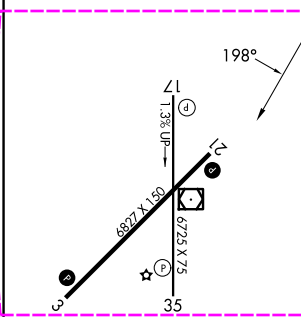
KINGMAN (IGM)

<b>⚠</b> DME/DME RNP-0.3 NA. Circling NA for Cat D southeast of Rwy 3-21. Circling Rwy 35 NA at night.	MISSED APPROACH: Climbing right turn to 9000 direct PRFUM and hold, continue climb-in-hold to 9000.
--	---

ASOS <b>119.275</b>	LOS ANGELES CENTER <b>124.85 319.2</b>	UNICOM <b>122.8 (CTAF) 0</b>
------------------------	---	---------------------------------



ELEV 3449	<b>D</b>	TDZE 3403
-----------	----------	-----------



CATEGORY	A	B	C	D
LNAV MDA	3820-1	417 (400-1)	3820-1¼	417 (400-1¼)
CIRCLING	3980-1 531 (600-1)	4100-1 651 (700-1)	4420-3	971 (1000-3)

KINGMAN, ARIZONA  
Orig-C 20MAY21

35°16'N-113°56'W

# RNAV (GPS) Y RWY 21

KINGMAN (IGM)

SW-4, 07 AUG 2025 to 04 SEP 2025

SW-4, 07 AUG 2025 to 04 SEP 2025