

KINGMAN, ARIZONA

AL-215 (FAA)

24361

WAAS CH 86312 W03A	APP CRS 033°	Rwy Idg 6827 TDZE 3412 Apt Elev 3449
--	------------------------	---

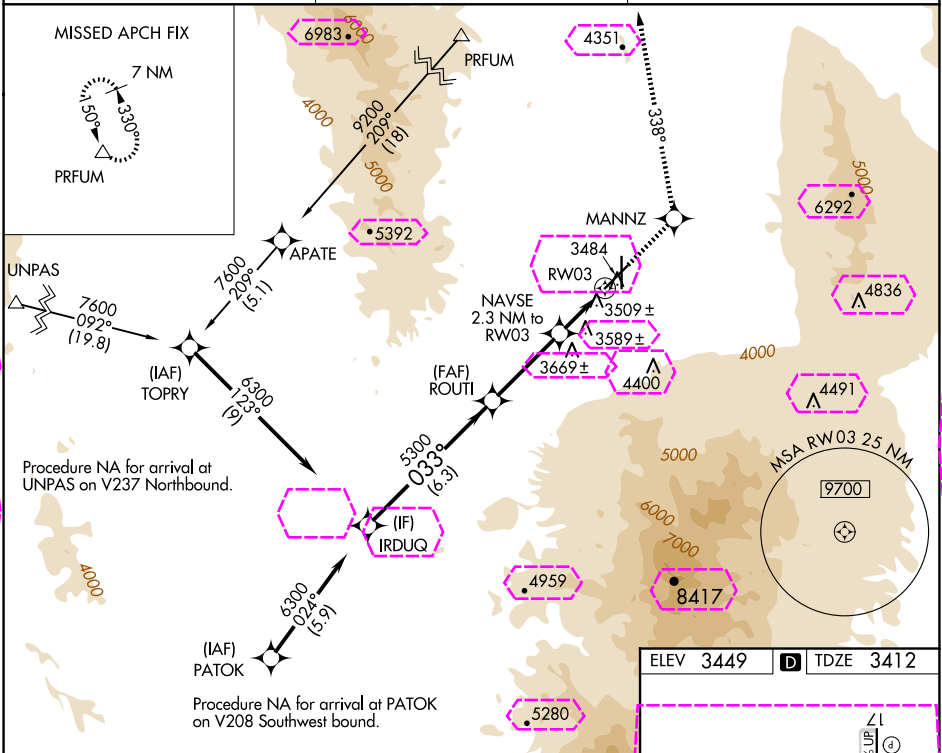
RNAV (GPS) RWY 3

KINGMAN (IGM)

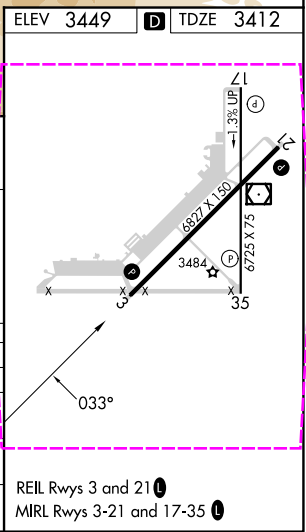
⚠ For uncompensated Baro-VNAV systems, LNAV/VNAV NA below -21°C (-5°F) or above 42°C (107°F). DME/DME RNP-0.3 NA. Circling NA for Cat D southeast of Rwy 3-21. Circling Rwy 35 NA at night.

MISSED APPROACH: Climb to 9000 direct MANNZ and via track 338° to PRFUM and hold, continue climb-in-hold to 9000.

ASOS 119.275	LOS ANGELES CENTER 124.85 319.2	UNICOM 122.8 (CTAF) 0
------------------------	---	---------------------------------



Procedure	IRDUQ	ROUTI	MANNZ	PRFUM
Turn	033°	033°	338°	338°
NA	GP 3.00° TCH 45	NAVSE 2.3 NM to RW03	NAVSE 2.3 NM to RW03	NAVSE 2.3 NM to RW03
	6300	5300	4180	4180
	6.3 NM	3.4 NM	2.3 NM	2.3 NM
CATEGORY	A	B	C	D
LPV DA		3713-1	301 (400-1)	
LNAV/VNAV DA		3952-2	540 (600-2)	
LNAV MDA	3840-1	428 (500-1)	3840-1½ 428 (500-1½)	3840-1½ 428 (500-1½)
CIRCLING	3980-1 531 (600-1)	4100-1 651 (700-1)	4420-3	971 (1000-3)



KINGMAN, ARIZONA
Orig-C 20MAY21

35°16'N-113°56'W

KINGMAN (IGM)
RNAV (GPS) RWY 3

SW-4, 10 JUL 2025 to 07 AUG 2025

SW-4, 10 JUL 2025 to 07 AUG 2025

KINGMAN, ARIZONA

AL-215 (FAA)

25219

WAAS CH 86312 W03A	APP CRS 033°	Rwy Ldg TDZE Apt Elev 3449
--	------------------------	---

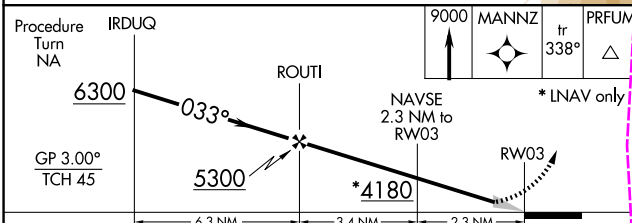
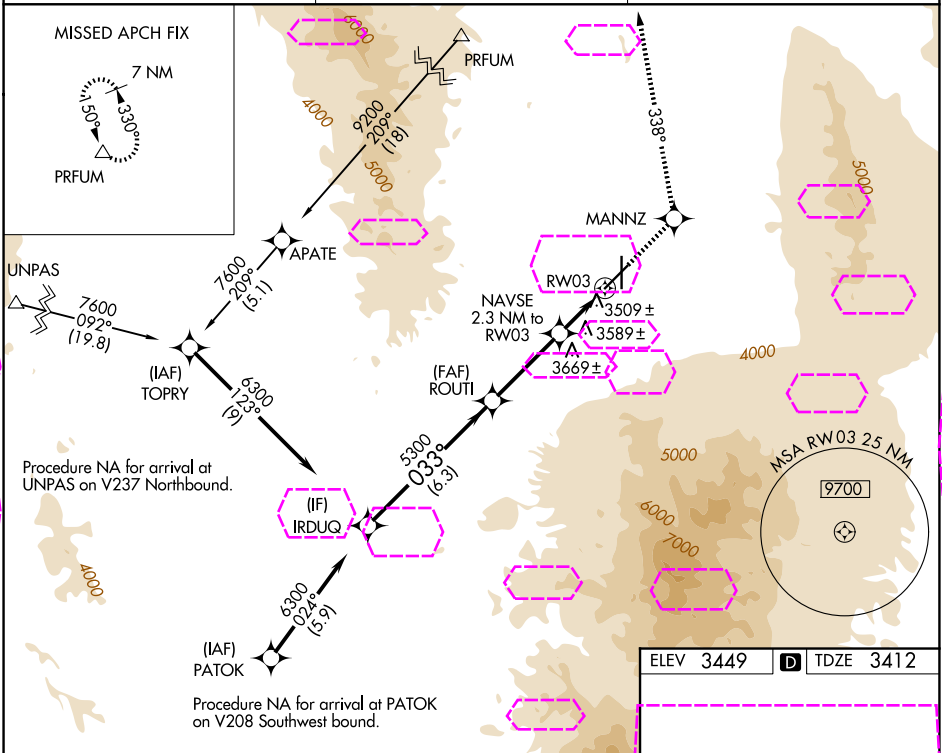
RNAV (GPS) RWY 3

KINGMAN (IGM)

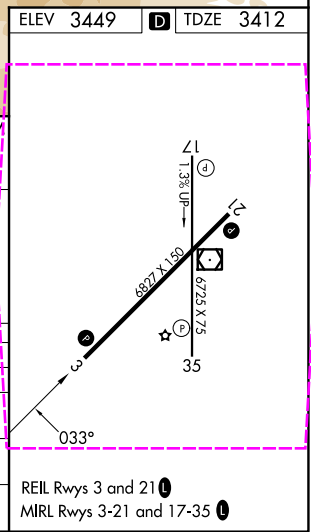
⚠ For uncompensated Baro-VNAV systems, LNAV/VNAV NA below -21°C (-5°F) or above 42°C (107°F). DME/DME RNP-0.3 NA. Circling NA for Cat D southeast of Rwy 3-21. Circling Rwy 35 NA at night.

MISSED APPROACH: Climb to 9000 direct MANNZ and via track 338° to PRFUM and hold, continue climb-in-hold to 9000.

ASOS 119.275	LOS ANGELES CENTER 124.85 319.2	UNICOM 122.8 (CTAF) 0
------------------------	---	---------------------------------



CATEGORY	A	B	C	D
LPV DA		3713-1	301 (400-1)	
LNAV/VNAV DA		3952-2	540 (600-2)	
LNAV MDA	3840-1	428 (500-1)	3840-1½ 428 (500-1½)	3840-1½ 428 (500-1½)
CIRCLING	3980-1 531 (600-1)	4100-1 651 (700-1)	4420-3	971 (1000-3)



KINGMAN, ARIZONA
Orig-C 20MAY21

35°16'N-113°56'W

KINGMAN (IGM)
RNAV (GPS) RWY 3