

JACKSONVILLE, FLORIDA

AL-208 (FAA)

21168

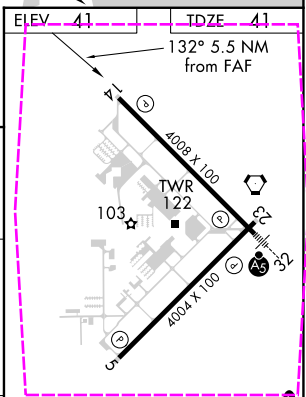
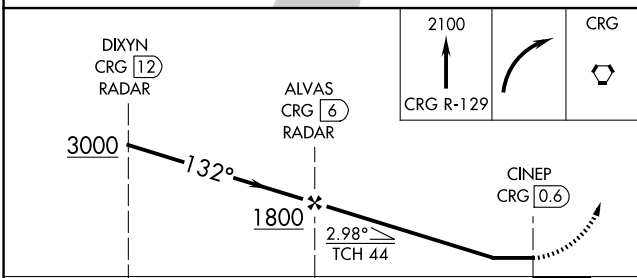
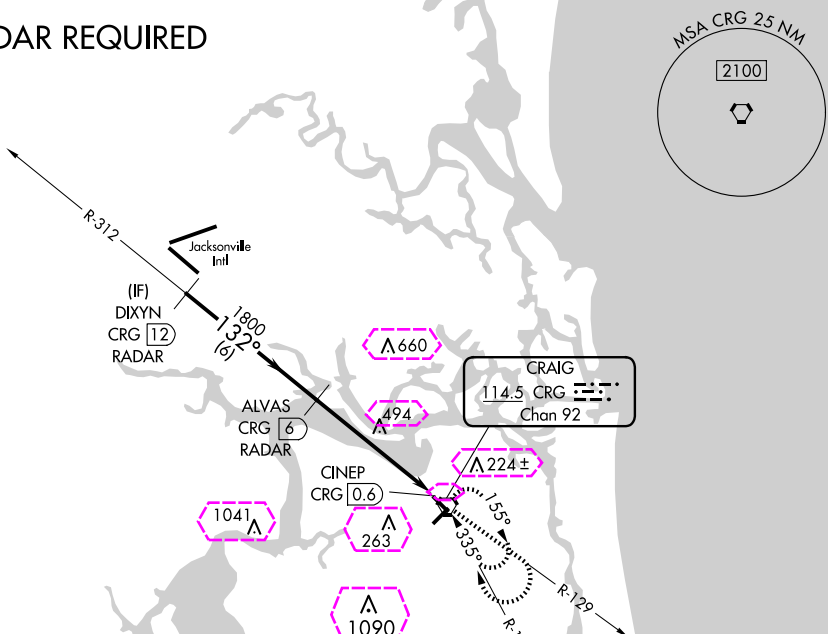
VORTAC CRG	APP CRS	Rwy Idg	4008
114.5	132°	TDZE	41
Chan 92		Apt Elev	41

VOR RWY 14
JACKSONVILLE EXEC AT CRAIG (CRG)

▼ Procedure NA at night. ▲ DME or Radar required. Helicopter visibility reduction below 1 SM NA.	MISSED APPROACH: Climb to 2100 via CRG VORTAC R-129 then right turn direct CRG VORTAC and hold.
--	---

ATIS 125.4	JACKSONVILLE APP CON 124.9 308.4	CRAIG TOWER ★ 132.1 (CTAF) 269.525	GND CON 121.8	CLNC DEL 118.35	UNICOM 122.95
---------------	-------------------------------------	---------------------------------------	------------------	--------------------	------------------

RADAR REQUIRED



CATEGORY	A	B	C	D
S-14	800-1 759 (800-1)	800-1¼ 759 (800-1¼)	800-2½	759 (800-2½)
CIRCLING	800-1 759 (800-1)	800-1¼ 759 (800-1¼)	800-2½	759 (800-2½)

FAF to MAP 5.5 NM					
Knots	60	90	120	150	180
Min:Sec	5:30	3:40	2:45	2:12	1:50

JACKSONVILLE, FLORIDA
Amdt 5A 28MAY15

30°20'N-81°31'W

JACKSONVILLE EXEC AT CRAIG (CRG)
VOR RWY 14

JACKSONVILLE, FLORIDA

AL-208 (FAA)

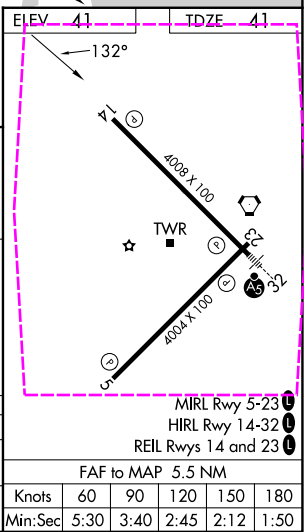
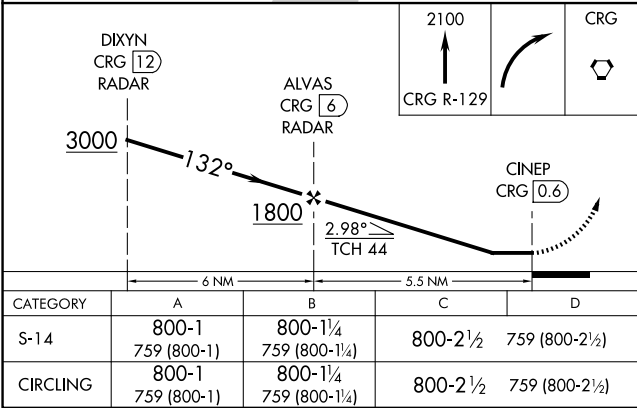
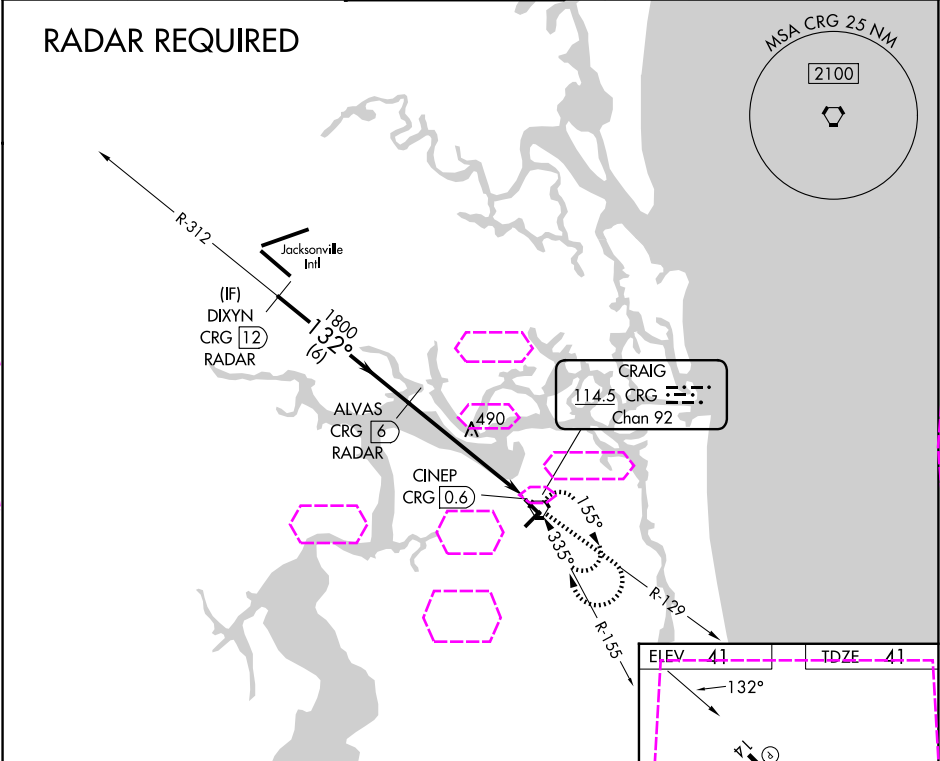
25219

VORTAC CRG	APP CRS	Rwy Ldg	4008
114.5	132°	TDZE	41
Chan 92		Apt Elev	41

VOR RWY 14
JACKSONVILLE EXEC AT CRAIG (CRG)

Procedure NA at night. DME or Radar required. Helicopter visibility reduction below 1 SM NA.	MISSED APPROACH: Climb to 2100 via CRG VORTAC R-129 then right turn direct CRG VORTAC and hold.
--	---

ATIS 125.4	JACKSONVILLE APP CON 124.9 308.4	CRAIG TOWER ★ 132.1 (CTAF) 269.525	GND CON 121.8	CLNC DEL 118.35	UNICOM 122.95
---------------	-------------------------------------	---------------------------------------	------------------	--------------------	------------------



JACKSONVILLE, FLORIDA
Amdt 5A 28MAY15

30°20'N-81°31'W

JACKSONVILLE EXEC AT CRAIG (CRG)
VOR RWY 14

SE-3, 07 AUG 2025 to 04 SEP 2025

SE-3, 07 AUG 2025 to 04 SEP 2025