

WAAS CH 57901 W32A	APP CRS 321°	Rwy Idg 4008 TDZE 41 Apt Elev 41
--	------------------------	---

RNAV (GPS) RWY 32
JACKSONVILLE EXEC AT CRAIG (CRG)

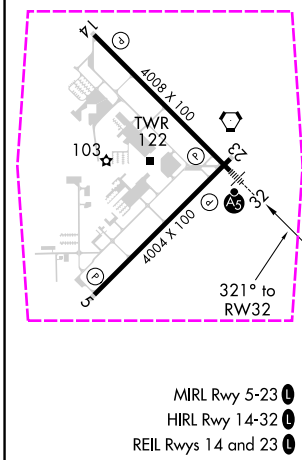
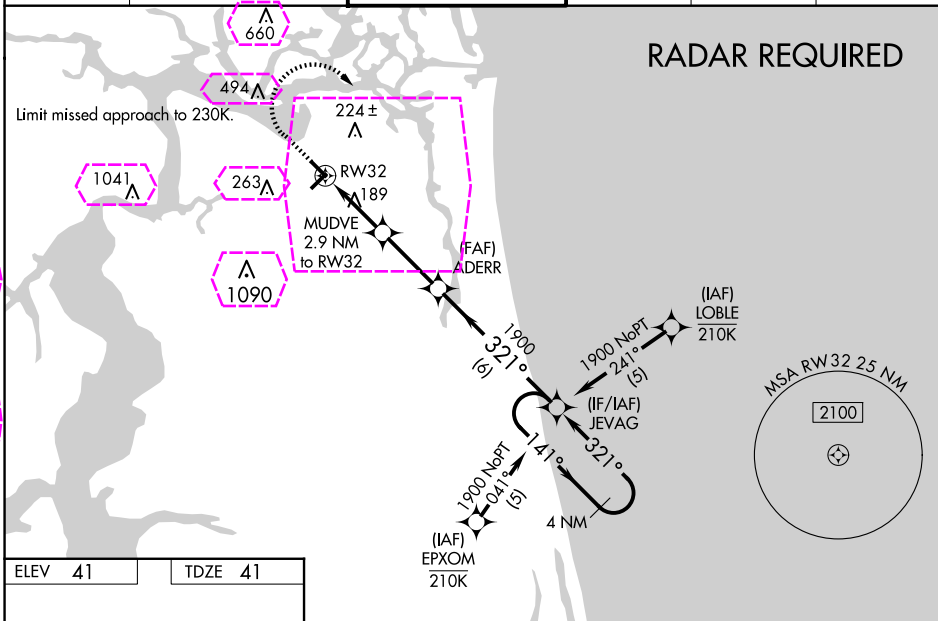
▼ Night landing: Rwy 5 NA. Baro-VNAV and VDP NA when using Jacksonville Intl altimeter setting. For uncomputed Baro-VNAV systems, LNAV/VNAV NA below -3°C (27°F) or above 54°C (130°F). DME/DME RNP-0.3 NA. Helicopter visibility reduction below ¾ SM NA. VDP NA with Jacksonville Intl altimeter setting. When local altimeter setting not received, use Jacksonville Intl altimeter setting: increase LPV DA to 273 feet; increase LNAV/VNAV DA to 413 feet; increase all MDAs 40 feet and Circling visibility Cat C ¼ SM. For inop MALSR, when using Jacksonville Intl altimeter setting, increase LNAV/VNAV all Cats visibility to 1½ and LNAV Cats C/D visibility to 1¼.

MALSR



MISSED APPROACH:
Climb to 700 then
climbing right turn to
1900 direct JEVAG
and hold.

ATIS 125.4	JACKSONVILLE APP CON 124.9 308.4	CRAIG TOWER ★ 132.1 (CTAF) 0 269.525	GND CON 121.8	CLNC DEL 118.35	UNICOM 122.95
---------------	-------------------------------------	---	------------------	--------------------	------------------

[illegible]

JACKSONVILLE, FLORIDA

AL-208 (FAA)

25219

WAAS CH 57901 W32A	APP CRS 321°	Rwy Ldg 4008 TDZE 41 Apt Elev 41
--	------------------------	---

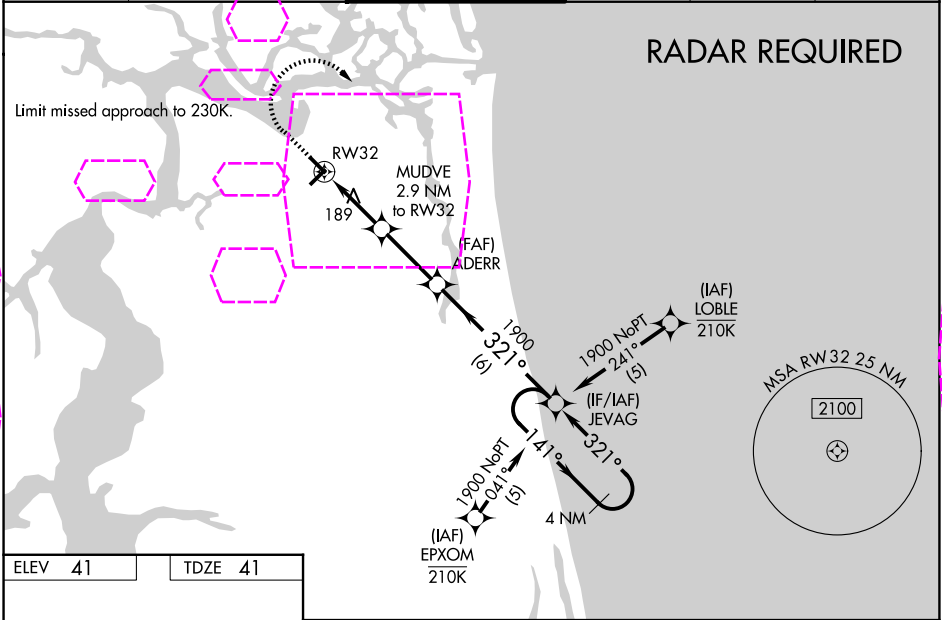
RNAV (GPS) RWY 32
JACKSONVILLE EXEC AT CRAIG (CRG)

⚠ Night landing: Rwy 5 NA. Baro-VNAV and VDP NA when using Jacksonville Intl altimeter setting. For uncompensated Baro-VNAV systems, LNAV/VNAV NA below -3°C (27°F) or above 54°C (130°F). DME/DME RNP-0.3 NA. Helicopter visibility reduction below ¾ SM NA. VDP NA with Jacksonville Intl altimeter setting. When local altimeter setting not received, use Jacksonville Intl altimeter setting: increase LPV DA to 273 feet; increase LNAV/VNAV DA to 413 feet; increase all MDAs 40 feet and Circling visibility Cat C ¼ SM. For inop MALSR, when using Jacksonville Intl altimeter setting, increase LNAV/VNAV all Cats visibility to 1½ and LNAV Cats C/D visibility to 1¼.

MALSR

MISSED APPROACH:
Climb to 700 then climbing right turn to 1900 direct JEVAG and hold.

ATIS 125.4	JACKSONVILLE APP CON 124.9 308.4	CRAIG TOWER ★ 132.1 (CTAF) 269.525	GND CON 121.8	CLNC DEL 118.35	UNICOM 122.95
----------------------	--	--	-------------------------	---------------------------	-------------------------



ELEV 41 TDZE 41

MIRL Rwy 5-23
HIRL Rwy 14-32
REIL Rwy 14 and 23

	700	1900	JEVAG	
	*LNAV only.			
	*1.1 NM to RW32			
	*1000			
	1.1 NM 1.8 NM 2.8 NM 6 NM			
CATEGORY	A	B	C	D
LPV DA		241-1	200 (200-1)	
LNAV/VNAV DA		381-1	340 (400-1)	
LNAV MDA		440-1	399 (400-1)	
CIRCLING	500-1 459 (500-1)	600-1 559 (600-1)	620-1½ 579 (600-1½)	800-2½ 759 (800-2½)

JACKSONVILLE, FLORIDA
Amdt 1B 30DEC21

30°20'N-81°31'W

JACKSONVILLE EXEC AT CRAIG (CRG)
RNAV (GPS) RWY 32

SE-3, 07 AUG 2025 to 04 SEP 2025

SE-3, 07 AUG 2025 to 04 SEP 2025