

LOC I-CRG	APP CRS	Rwy Idg	<b>4008</b>
<u><b>111.7</b></u>	<b>321°</b>	TDZE	<b>41</b>
		Apt Elev	<b>41</b>

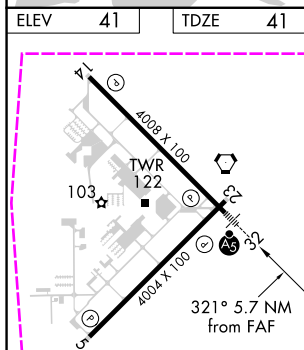
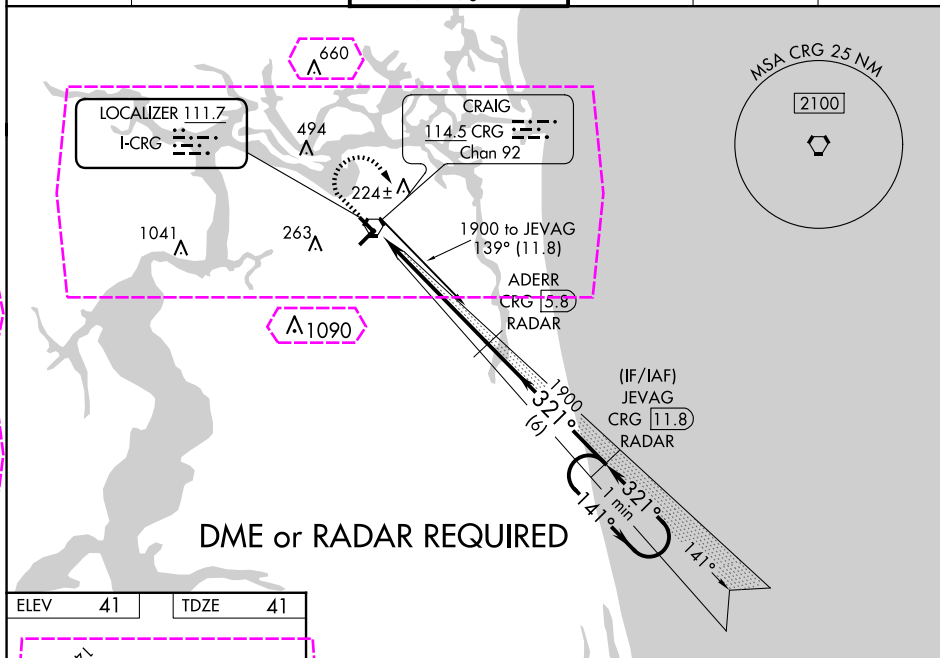
ILS or LOC RWY 32  
JACKSONVILLE EXEC AT CRAIG (CRG)

**▼** Night landing: Rwy 5 NA. DME or radar required. Helicopter visibility reduction below 1 SM NA. When local altimeter setting not received, use Jacksonville Intl altimeter setting: increase DA to 273 feet; increase all MDAs 40 feet and Circling visibility Cat C ¼ SM. For inop MALS, increase S-LOC 32 Cts C/D visibility to 1¼ mile. For inop MALS, when using Jacksonville Intl altimeter setting, increase S-LOC 32 Cts C/D visibility to 1¾ mile.



**MISSED APPROACH:** Climb to 700 then climbing right turn to 1900 on heading 180° and on CRG VORTAC R-139 to JEVAG/CRG VORTAC 11.8 DME/RADAR and hold.

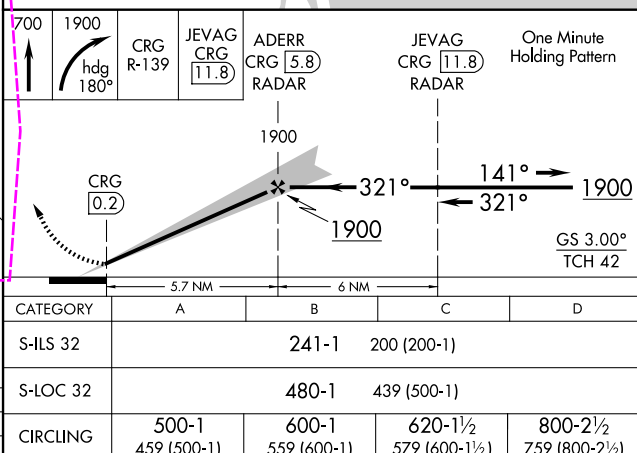
ATIS 125.4	JACKSONVILLE APP CON 124.9 308.4	CRAIG TOWER ★ 132.1 (CTAF) 0 269.525	GND CON 121.8	CLNC DEL 118.35	UNICOM 122.95
---------------	-------------------------------------	---	------------------	--------------------	------------------



MIRL Rwy 5-23 **L**  
HIRL Rwy 14-32 **L**  
REIL Rwy 14 and 23 **L**

FAF to MAP 5.7 NM

Knots	60	90	120	150	180
Min:Sec	5:42	3:48	2:51	2:17	1:54



JACKSONVILLE EXEC AT CRAIG (CRG)

Amdt 5B 30DEC21

30°20'N-81°31'W

## ILS or LOC RWY 32

JACKSONVILLE, FLORIDA

AL-208 (FAA)

25219

LOC I-CRG 111.7	APP CRS 321°	Rwy Ldg 4008
	TDZE 41	
	Apt Elev 41	

# ILS or LOC RWY 32

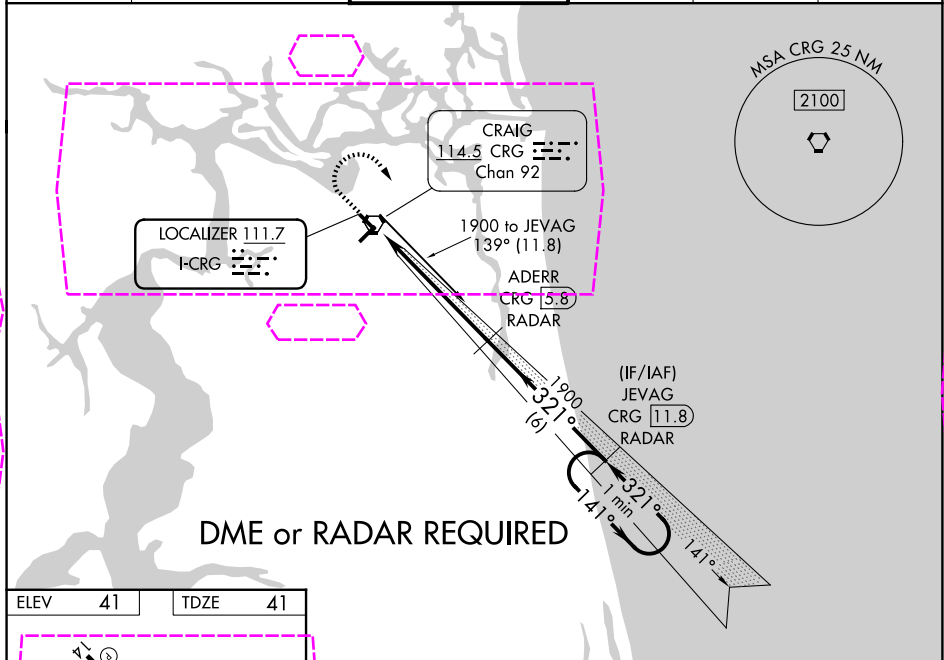
JACKSONVILLE EXEC AT CRAIG (CRG)

**⚠ Night landing: Rwy 5 NA. DME or radar required. Helicopter visibility reduction below 1 SM NA. When local altimeter setting not received, use Jacksonville Intl altimeter setting: increase DA to 273 feet; increase all MDAs 40 feet and Circling visibility Cat C ¼ SM. For inop MALS, increase S-LOC 32 Cats C/D visibility to 1¼ mile. For inop MALS, when using Jacksonville Intl altimeter setting, increase S-LOC 32 Cats C/D visibility to 1¾ mile.**

**MALS**

**⚠ MISSED APPROACH:** Climb to 700 then climbing right turn to 1900 on heading 180° and on CRG VORTAC R-139 to JEVAG/CRG VORTAC 11.8 DME/RADAR and hold.

ATIS 125.4	JACKSONVILLE APP CON 124.9 308.4	CRAIG TOWER ★ 132.1 (CTAF) 269.525	GND CON 121.8	CLNC DEL 118.35	UNICOM 122.95
---------------	-------------------------------------	---------------------------------------	------------------	--------------------	------------------



ELEV	41	TDZE	41
------	----	------	----

**MIRL Rwy 5-23**

**HIRL Rwy 14-32**

**REIL Rws 14 and 23**

**FAF to MAP 5.7 NM**

Knots	60	90	120	150	180
Min:Sec	5:42	3:48	2:51	2:17	1:54

700	1900	CRG R-139	JEVAG CRG 11.8	ADERR CRG 5.8 RADAR	JEVAG CRG 11.8 RADAR	One Minute Holding Pattern
-----	------	-----------	----------------	---------------------	----------------------	----------------------------

1900

321°

141°

1900

GS 3.00°  
TCH 42

	5.7 NM	6 NM		
--	--------	------	--	--

CATEGORY	A	B	C	D
S-ILS 32		241-1	200 (200-1)	
S-LOC 32		480-1	439 (500-1)	
CIRCLING	500-1 459 (500-1)	600-1 559 (600-1)	620-1½ 579 (600-1½)	800-2½ 759 (800-2½)

JACKSONVILLE, FLORIDA  
Amdt 5B 30DEC21

JACKSONVILLE EXEC AT CRAIG (CRG)  
30°20'N-81°31'W  
**ILS or LOC RWY 32**

SE-3, 07 AUG 2025 to 04 SEP 2025

SE-3, 07 AUG 2025 to 04 SEP 2025