

JACKSON, MISSISSIPPI

AL-206 (FAA)

21224

WAAS CH 56416 W34A	APP CRS 339°	Rwy Idg 5387 TDZE 322 Apt Elev 341
--	------------------------	---

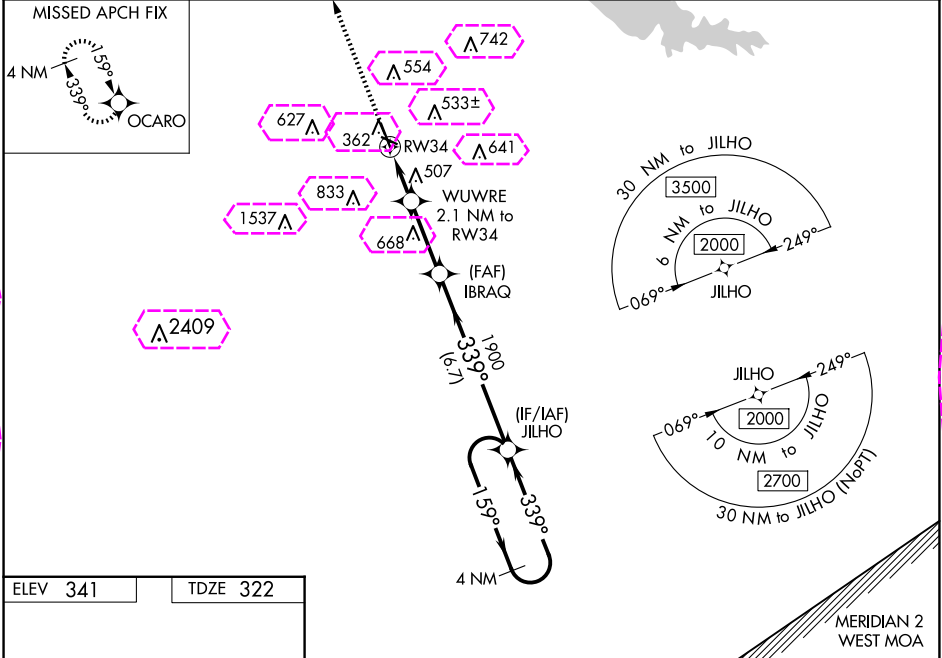
RNAV (GPS) RWY 34

HAWKINS FLD (HKS)

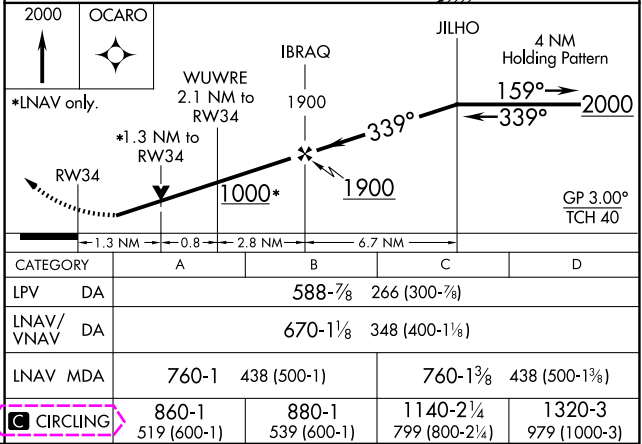
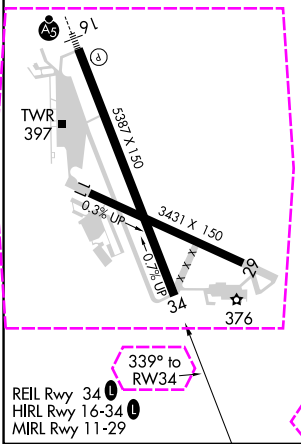
⚠ For uncompensated Baro-VNAV systems, LNAV/VNAV NA below -6°C (22°F) or above 54°C (130°F). DME/DME RNP-0.3 NA. Baro-VNAV and VDP NA when using Jackson-Medgar Wiley Evers Intl altimeter setting. When local altimeter setting not received, use Jackson-Medgar Wiley Evers Intl altimeter setting and increase all DA 19 feet and all MDA 20 feet. Increase LPV and LNAV/VNAV all Cts visibility 1/8 mile and Circling Cat C visibility 1/4 mile. Rwy 34 helicopter visibility reduction below 3/4 SM NA.

MISSED APPROACH:
Climb to 2000 direct
OCARO and hold.

ASOS 120.625	JACKSON APP CON ★ 123.9 319.2	HAWKINS TOWER ★ 119.65 (CTAF) 257.8	GND CON 121.9 239.0	CLNC DEL 121.9 (When twr closed)	UNICOM 122.95
------------------------	---	---	-------------------------------	---	-------------------------



ELEV 341	TDZE 322
-----------------	-----------------



JACKSON, MISSISSIPPI
Amdt 2A 25MAY17

32°20'N-90°13'W

HAWKINS FLD (HKS)
RNAV (GPS) RWY 34

SC-4, 10 JUL 2025 to 07 AUG 2025

SC-4, 10 JUL 2025 to 07 AUG 2025

JACKSON, MISSISSIPPI

AL-206 (FAA)

25219

WAAS CH 56416 W34A	APP CRS 339°	Rwy Ldg TDZE 322 Apt Elev 341
--	------------------------	---

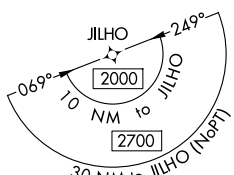
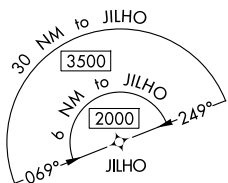
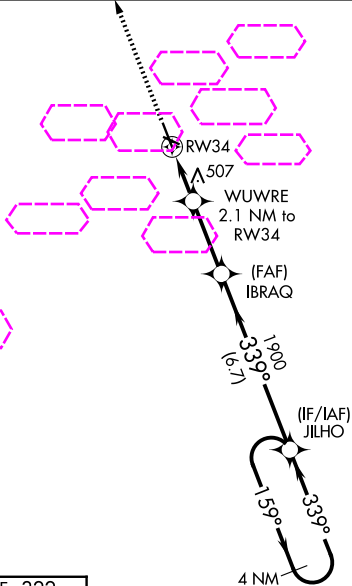
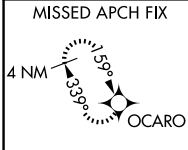
RNAV (GPS) RWY 34

HAWKINS FLD (HKS)

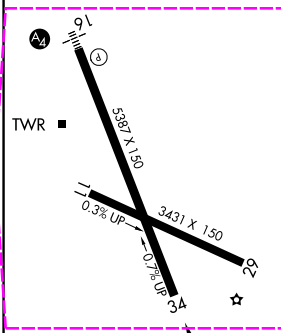
⚠ For uncompensated Baro-VNAV systems, LNAV/VNAV NA below -6°C (22°F) or above 54°C (130°F). DME/DME RNP-0.3 NA. Baro-VNAV and VDP NA when using Jackson-Medgar Wiley Evers Intl altimeter setting. When local altimeter setting not received, use Jackson-Medgar Wiley Evers Intl altimeter setting and increase all DA 19 feet and all MDA 20 feet. Increase LPV and LNAV/VNAV all Cts visibility ½ mile and Circling Cat C visibility ¼ mile. Rwy 34 helicopter visibility reduction below ¾ SM NA.

MISSED APPROACH:
Climb to 2000 direct
OCARO and hold.

ASOS 120.625	JACKSON APP CON ★ 123.9 319.2	HAWKINS TOWER ★ 119.65 (CTAF) 0 257.8	GND CON 121.9 239.0	CLNC DEL 121.9 (When twr closed)	UNICOM 122.95
------------------------	---	---	-------------------------------	---	-------------------------



ELEV 341	TDZE 322
-----------------	-----------------



REIL Rwy 34
HIRL Rwy 16-34
MIRL Rwy 11-29

2000 ↑	OCARO ✦				
*LNAV only.		WUWRE 2.1 NM to RW34	IBRAQ 1900	JILHO 4 NM Holding Pattern	2000 159° → ← 339°
RW34 ⋯		*1.3 NM to RW34 1000*	1900	GP 3.00° TCH 40	
1.3 NM		0.8	2.8 NM	6.7 NM	
CATEGORY		A	B	C	D
LPV DA		588-7 ⁸ / ₈		266 (300-7 ⁸ / ₈)	
LNAV/VNAV DA		670-1 ¹ / ₈		348 (400-1 ¹ / ₈)	
LNAV MDA		760-1	438 (500-1)	760-1 ³ / ₈	438 (500-1 ³ / ₈)
CIRCLING		860-1 519 (600-1)	880-1 539 (600-1)	1140-2 ¹ / ₄ 799 (800-2 ¹ / ₄)	1320-3 979 (1000-3)

JACKSON, MISSISSIPPI
Amdt 2A 25MAY17

32°20'N-90°13'W

HAWKINS FLD (HKS)
RNAV (GPS) RWY 34

SC-4, 07 AUG 2025 to 04 SEP 2025

SC-4, 07 AUG 2025 to 04 SEP 2025