

JACKSON, MISSISSIPPI

AL-206 (FAA)

21 224

WAAS CH <b>50316</b> <b>W16A</b>	APP CRS <b>159°</b>	Rwy Idg <b>5387</b> TDZE <b>341</b> Apt Elev <b>341</b>
----------------------------------------	------------------------	---------------------------------------------------------------

# RNAV (GPS) RWY 16

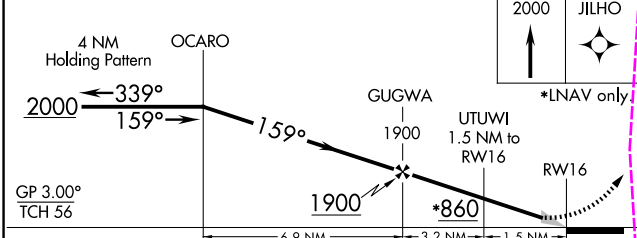
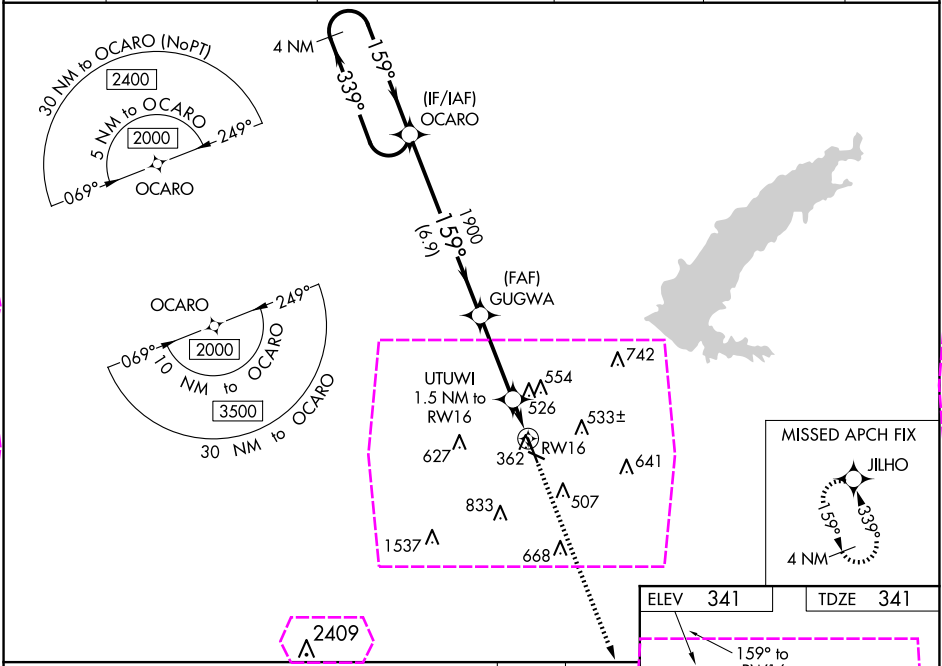
HAWKINS FLD (HKS)

**⚠** Baro-VNAV NA when using Jackson-Medgar Wiley Evers Intl altimeter setting. For uncompensated Baro-VNAV systems, LNAV/VNAV NA below -6°C (22°F) or above 54°C (130°F). DME/DME RNP-0.3 NA. When local altimeter setting not received, use Jackson-Medgar Wiley Evers Intl altimeter setting and increase all DA 19 feet and all MDA 20 feet. Increase LNAV/VNAV all Cats and LNAV Cats C/D visibilities ½ mile and Circling Cat C ¼ mile. For inop MALS when using Jackson-Medgar Wiley Evers Intl altimeter setting increase LNAV/VNAV all Cats to 1½.

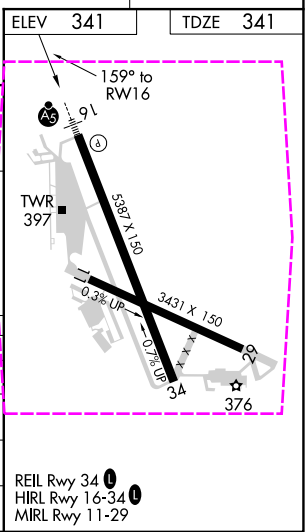
**MALS**

**MISSED APPROACH:**  
Climb to 2000 direct JILHO and hold.

ASOS <b>120.625</b>	JACKSON APP CON ★ <b>123.9 319.2</b>	HAWKINS TOWER ★ <b>119.65 (CTAF) 0 257.8</b>	GND CON <b>121.9 239.0</b>	CLNC DEL <b>121.9</b> (When twr closed)	UNICOM <b>122.95</b>
------------------------	-----------------------------------------	-------------------------------------------------	-------------------------------	-----------------------------------------------	-------------------------



CATEGORY	A	B	C	D
LPV DA		542-½	201 (300-½)	
LNAV/VNAV DA		677-⅝	336 (400-⅝)	
LNAV MDA	780-½	439 (500-½)	780-¾	439 (500-¾)
<b>CIRCLING</b>	860-1 519 (600-1)	880-1 539 (600-1)	1140-2¼ 799 (800-2¼)	1320-3 979 (1000-3)



JACKSON, MISSISSIPPI  
Amdt 2A 11DEC14

32°20'N-90°13'W

HAWKINS FLD (HKS)  
RNAV (GPS) RWY 16

SC-4, 10 JUL 2025 to 07 AUG 2025

SC-4, 10 JUL 2025 to 07 AUG 2025

JACKSON, MISSISSIPPI

AL-206 (FAA)

25219

WAAS CH <b>50316</b> <b>W16A</b>	APP CRS <b>159°</b>	Rwy Ldg <b>5387</b> TDZE <b>341</b> Apt Elev <b>341</b>
----------------------------------------	------------------------	---------------------------------------------------------------

# RNAV (GPS) RWY 16

HAWKINS FLD (HKS)

**⚠** Baro-VNAV NA when using Jackson-Medgar Wiley Evers Intl altimeter setting. For uncompensated Baro-VNAV systems, LNAV/VNAV NA below -6°C (22°F) or above 54°C (130°F). DME/DME RNP-0.3 NA. When local altimeter setting not received, use Jackson-Medgar Wiley Evers Intl altimeter setting and increase all DA 19 feet and all MDA 20 feet. Increase LNAV/VNAV all Cats and LNAV Cats C/D visibilities ½ mile and Circling Cat C ¼ mile. For inop MALS when using Jackson-Medgar Wiley Evers Intl altimeter setting increase LNAV/VNAV all Cats to 1½.

**MALS**  
 = **MISSED APPROACH:**  
Climb to 2000 direct JILHO and hold.

ASOS <b>120.625</b>	JACKSON APP CON ★ <b>123.9 319.2</b>	HAWKINS TOWER ★ <b>119.65 (CTAF) 0 257.8</b>	GND CON <b>121.9 239.0</b>	CLNC DEL <b>121.9</b> (When twr closed)	UNICOM <b>122.95</b>
------------------------	-----------------------------------------	-------------------------------------------------	-------------------------------	-----------------------------------------------	-------------------------

