

INDIANAPOLIS, INDIANA

AL-203 (FAA)

24361

WAAS CH <b>45706</b> <b>W05A</b>	APP CRS <b>050°</b>	Rwy Idg <b>11200</b> TDZE <b>747</b> Apt Elev <b>796</b>
--	------------------------	--

# RNAV (GPS) Y RWY 5L

INDIANAPOLIS INTL (IND)

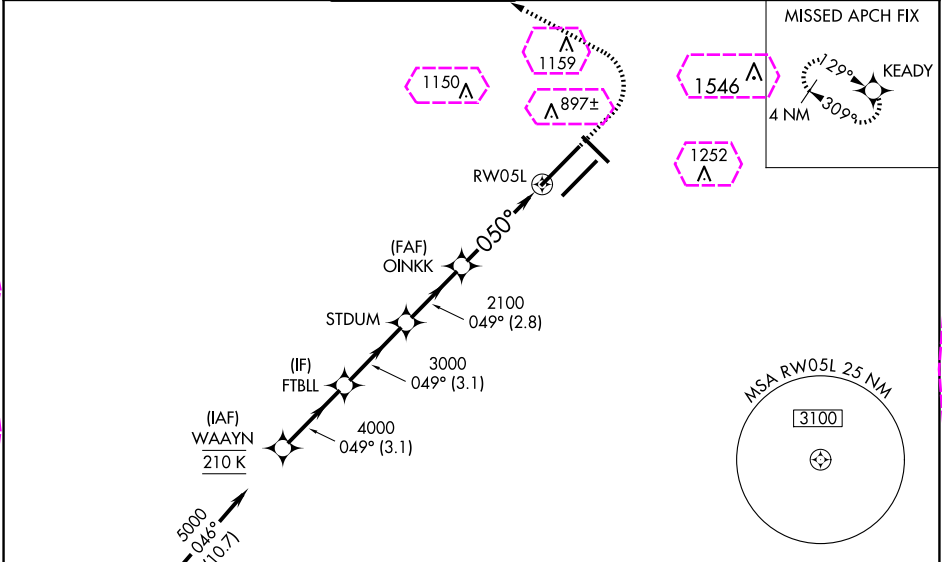
**T**  
**A**

For uncompensated Baro-VNAV systems, LNAV/VNAV NA below -18°C (0°F) or above 54°C (130°F). DME/DME RNP-0.3 NA. Simultaneous approach authorized. LNAV procedure NA during simultaneous operations. Use of FD or AP providing RNAV track guidance required during simultaneous operations. For inoperative ALS, increase LNAV/VNAV all Cats visibility to 1¼ SM and increase LNAV Cat C/D visibility to 1½ SM.

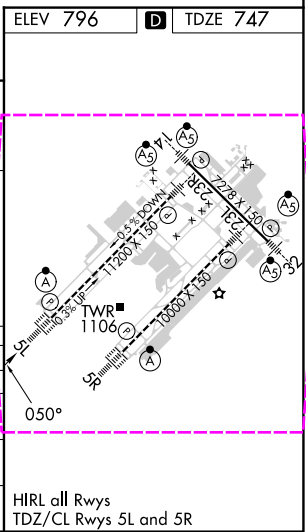
ALSF-2

MISSED APPROACH:  
Climb to 1300 then climbing left turn to 3000 direct KEADY and hold.

D-ATIS <b>134.25</b>	INDIANAPOLIS APP CON <b>128.175 317.8</b>	INDY TOWER <b>120.9 251.1</b>	GND CON <b>121.9</b>	CLNC DEL <b>128.75 251.1</b>	CPDLC
-------------------------	--	----------------------------------	-------------------------	---------------------------------	-------



VGSI and RNAV glidepath not coincident (VGSI Angle 3.00/TCH 74).				
CATEGORY	A	B	C	D
LPV DA	947/18 200 (200-½)			
LNAV/VNAV DA	1136/45 389 (400-¾)			
LNAV MDA	1220/24	473 (500-½)	1220/50	473 (500-1)
<b>CIRCLING</b>	1420-1	624 (700-1)	1420-1¾ 624 (700-¾)	1560-2½ 764 (800-2½)



EC-2, 10 JUL 2025 to 07 AUG 2025

EC-2, 10 JUL 2025 to 07 AUG 2025

INDIANAPOLIS, INDIANA

AL-203 (FAA)

25219

WAAS CH <b>45706</b> <b>W05A</b>	APP CRS <b>050°</b>	Rwy Ldg <b>11200</b> TDZE <b>747</b> Apt Elev <b>796</b>
--	------------------------	--

# RNAV (GPS) Y RWY 5L

INDIANAPOLIS INTL (IND)

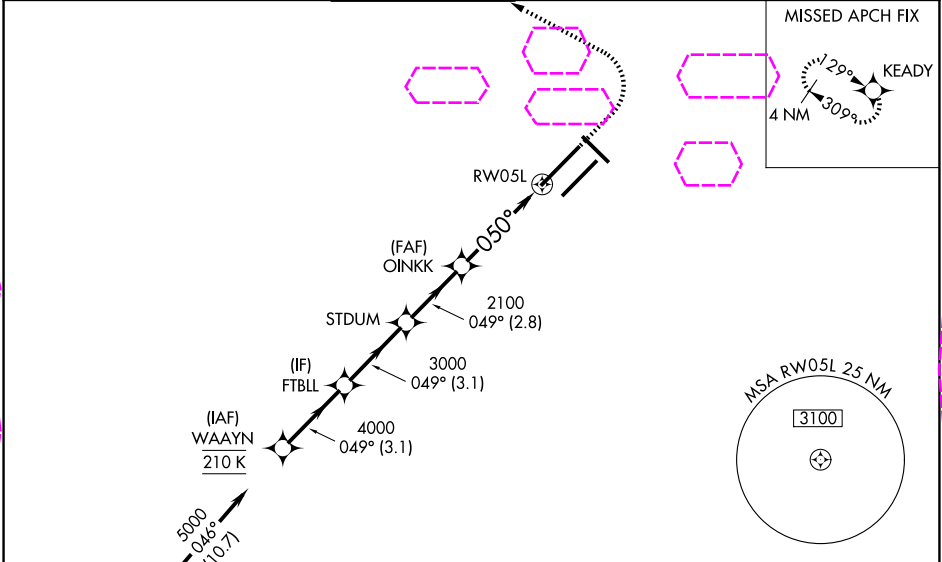
**T**  
**A**

For uncompensated Baro-VNAV systems, LNAV/VNAV NA below -18°C (0°F) or above 54°C (130°F). DME/DME RNP-0.3 NA. Simultaneous approach authorized. LNAV procedure NA during simultaneous operations. Use of FD or AP providing RNAV track guidance required during simultaneous operations. For inoperative ALS, increase LNAV/VNAV all Cats visibility to 1½ SM and increase LNAV Cat C/D visibility to 1¾ SM.

ALSF-2

MISSED APPROACH: Climb to 1300 then climbing left turn to 3000 direct KEADY and hold.

D-ATIS <b>134.25</b>	INDIANAPOLIS APP CON <b>128.175 317.8</b>	INDY TOWER <b>120.9 251.1</b>	GND CON <b>121.9</b>	CLNC DEL <b>128.75 251.1</b>	CPDLC
-------------------------	--	----------------------------------	-------------------------	---------------------------------	-------



ELEV 796		D		TDZE 747	
<p>VGSI and RNAV glidepath not coincident (VGSI Angle 3.00/TCH 74).</p> <p>WAAYN FTBLL STDUM OINKK RW05L</p> <p>5000 4000 3000 2100 2100 050°</p> <p>GP 3.00° TCH 53</p> <p>3.1 NM 3.1 NM 2.8 NM 2.8 NM 1.3</p> <p>1300 3000 KEADY</p> <p>*LNAV only.</p> <p>*1.3 NM to RW05L</p>					
CATEGORY	A	B	C	D	
LPV DA	947/18 200 (200-½)				
LNAV/VNAV DA	1136/45 389 (400-¾)				
LNAV MDA	1220/24 473 (500-½)		1220/50 473 (500-1)		
CIRCLING	1420-1 624 (700-1)		1420-1¾ 624 (700-¾)		1560-2½ 764 (800-2½)
					HIRL all Rwy TDZ/CL Rwy 5L and 5R

EC-2, 07 AUG 2025 to 04 SEP 2025

EC-2, 07 AUG 2025 to 04 SEP 2025