

INDIANAPOLIS, INDIANA

AI-203 (FAA)

24361

WAAS CH 77706 W23B	APP CRS 230°	Rwy Idg 11200 TDZE 783 Apt Elev 796
--	------------------------	--

RNAV (GPS) Y RWY 23R

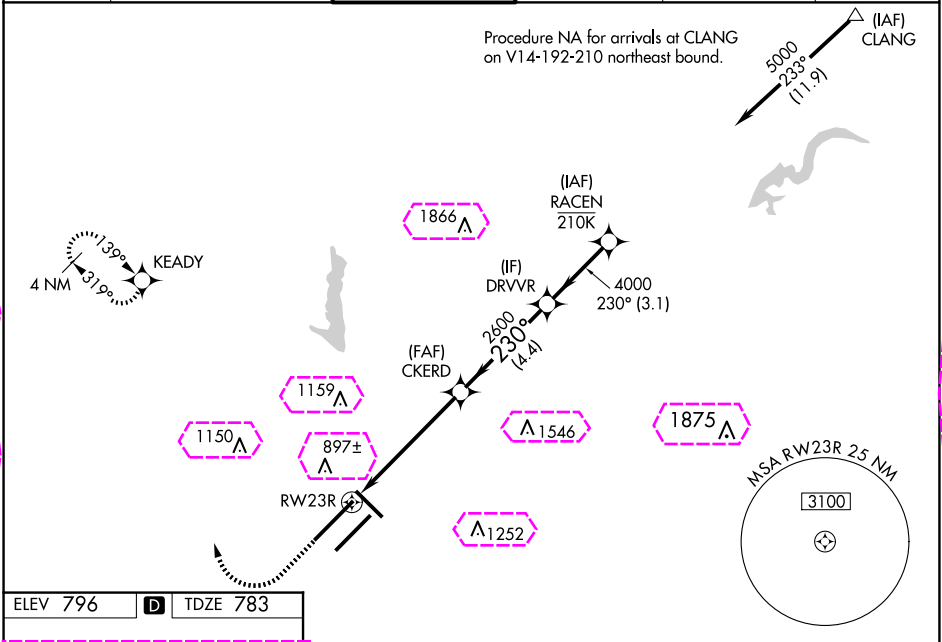
INDIANAPOLIS INTL (IND)

⚠ For uncompensated Baro-VNAV systems, LNAV/VNAV NA below -18°C (0°F) or above 54°C (130°F). DME/DME RNP-0.3 NA. For inoperative ALS, increase LNAV Cat C/D visibility to RVR 6000. Simultaneous approach authorized. LNAV procedure NA during simultaneous operations. Use of FD or AP providing RNAV track guidance required during simultaneous operations.
** RVR 1800 authorized with use of FD or AP or HUD to DA.

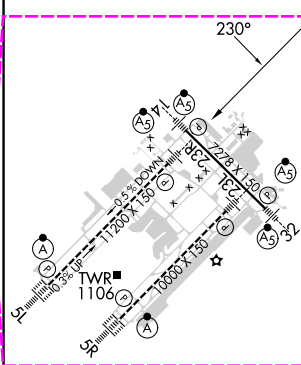
MALSRL

MISSED APPROACH:
Climb to 1500 then
climbing right turn to
3000 direct KEADY
and hold.

D-ATIS 134.25	INDIANAPOLIS APP CON 128.175 317.8	INDY TOWER 120.9 251.1	GND CON 121.9	CLNC DEL 128.75 251.1	CPDLC
-------------------------	--	----------------------------------	-------------------------	---------------------------------	-------



ELEV 796	D	TDZE 783
----------	----------	----------



		VGSI and RNAV glidepath not coincident (VGSI Angle 3.00/TCH 71).	
* LNAV only		CKERD	RACEN
* 1.1 NM to RW23R		2600	5000
		4000	
RW23R		2600	
1.1 NM		4.4 NM	3.1 NM
CATEGORY	A	B	C
LPV DA	** 983/24 200 (200-½)		
LNAV/VNAV DA	1165/40 382 (400-¾)		
LNAV MDA	1200/24	417 (500-½)	1200/40 417 (500-¾)
C CIRCLING	1420-1	624 (700-1)	1420-1¾ 624 (700-1¾) 1560-2½ 764 (800-2½)

INDIANAPOLIS, INDIANA
Amdt 4A 17AUG17

39°43'N-86°18'W

INDIANAPOLIS INTL (IND)

RNAV (GPS) Y RWY 23R

INDIANAPOLIS, INDIANA

AL-203 (FAA)

25219

WAAS CH 77706 W23B	APP CRS 230°	Rwy Ldg 11200 TDZE 783 Apt Elev 796
--	------------------------	--

RNAV (GPS) Y RWY 23R

INDIANAPOLIS INTL (IND)

⚠

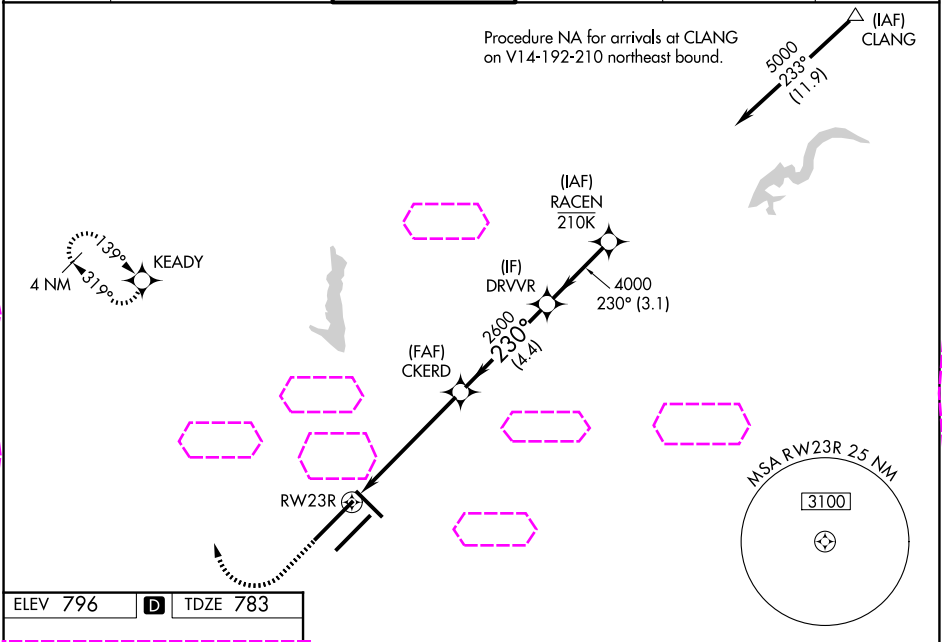
For uncompensated Baro-VNAV systems, LNAV/VNAV NA below -18°C (0°F) or above 54°C (130°F). DME/DME RNP-0.3 NA. For inoperative ALS, increase LNAV Cat C/D visibility to RVR 6000. Simultaneous approach authorized. LNAV procedure NA during simultaneous operations. Use of FD or AP providing RNAV track guidance required during simultaneous operations.
** RVR 1800 authorized with use of FD or AP or HUD to DA.

MALSR

MISSED APPROACH:

Climb to 1500 then climbing right turn to 3000 direct KEADY and hold.

D-ATIS 134.25	INDIANAPOLIS APP CON 128.175 317.8	INDY TOWER 120.9 251.1	GND CON 121.9	CLNC DEL 128.75 251.1	CPDLC
-------------------------	--	----------------------------------	-------------------------	---------------------------------	-------



ELEV 796	D	TDZE 783
----------	----------	----------

230°

1500 3000 KEADY

VGSI and RNAV glidepath not coincident (VGSI Angle 3.00/TCH 71).

RNAV only

1.1 NM to RW23R

CKERD 2600

DRVVR 4000

RACEN 5000

GP 3.00° TCH 55

CATEGORY	A	B	C	D
LPV DA	** 983/24 200 (200-½)			
LNAV/ VNAV DA	1165/40 382 (400-¾)			
LNAV MDA	1200/24	417 (500-½)	1200/40	417 (500-¾)
CIRCLING	1420-1	624 (700-1)	1420-1¾ 624 (700-1¾)	1560-2½ 764 (800-2½)

INDIANAPOLIS, INDIANA
Amdt 4A 17AUG17

39°43'N-86°18'W

INDIANAPOLIS INTL (IND)

RNAV (GPS) Y RWY 23R

EC-2, 07 AUG 2025 to 04 SEP 2025

EC-2, 07 AUG 2025 to 04 SEP 2025