



INDIANAPOLIS, INDIANA

AI-203 (FAA)

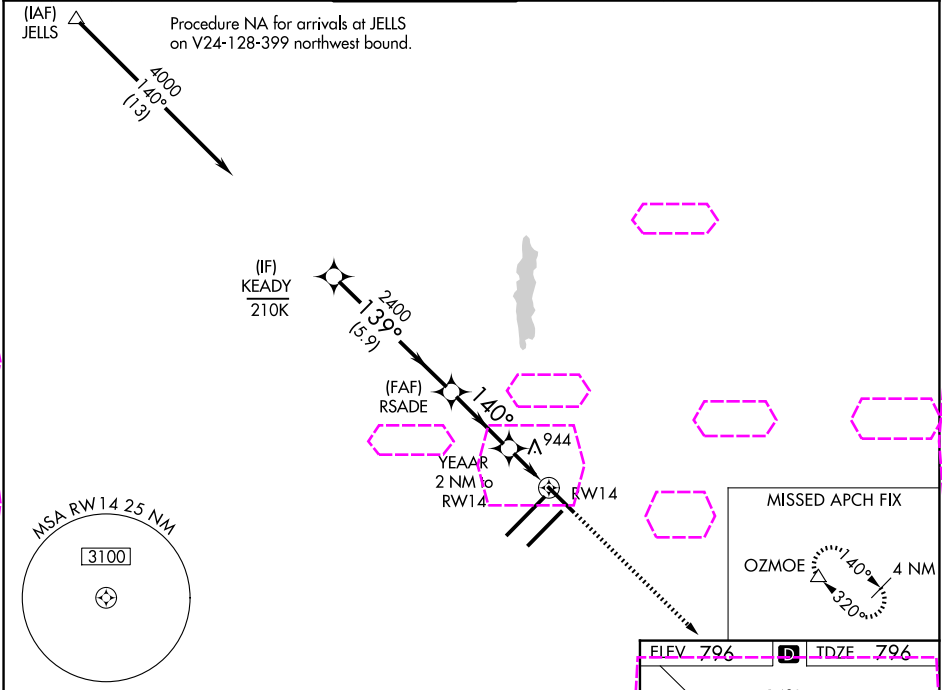
25219

WAAS CH 42602 W14A	APP CRS 140°	Rwy Ldg TDZE 796 Apt Elev 796
--	------------------------	---

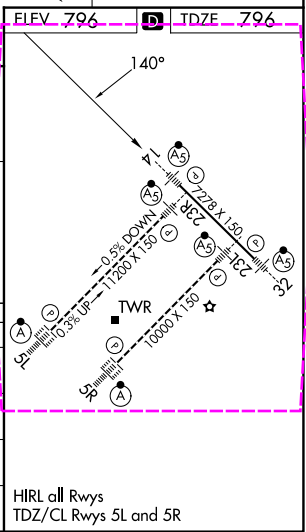
RNAV (GPS) Y RWY 14
INDIANAPOLIS INTL (IND)

 For uncompensated Baro-VNAV systems, LNAV/VNAV NA below -18°C (0°F) or above 54°C (130°F). DME/DME RNP-0.3 NA. **RVR 1800 authorized with use of FD or AP or HUD to DA.	MALSR 	MISSED APPROACH: Climb to 3000 direct OZMOE and hold.
---	--	---

D-ATIS 134.25	INDIANAPOLIS APP CON 128.175 317.8	INDY TOWER 120.9 251.1	GND CON 121.9	CLNC DEL 128.75 251.1	CPDLC
-------------------------	--	----------------------------------	-------------------------	---------------------------------	-------



KEADY		VGSI and RNAV glidepath not coincident (VGSI Angle 3.00/TCH 74).		3000		OZMOE
4000		139°		2400		△
GP 3.00°		TCH 55°		140°		
5.9 NM		2.9 NM		0.9 NM		
CATEGORY		A		B		
LPV DA		**996/24		200 (200-½)		
LNAV/VNAV DA		1092/24		296 (300-½)		
LNAV MDA		1200/24		404 (500-½)		
CIRCLING		1420-1		624 (700-1)		
		1420-1¾		624 (700-1¾)		
		1560-2½		764 (800-2½)		



INDIANAPOLIS, INDIANA
Amdt 4A 17AUG17

39°43'N-86°18'W

INDIANAPOLIS INTL (IND)
RNAV (GPS) Y RWY 14

EC-2, 07 AUG 2025 to 04 SEP 2025

EC-2, 07 AUG 2025 to 04 SEP 2025