

INDIANAPOLIS, INDIANA

AI-203 (FAA)

24361

APP CRS	Rwy Idg	10000
050°	TDZE	791
	Apt Elev	796

RNAV (RNP) Z RWY 5R

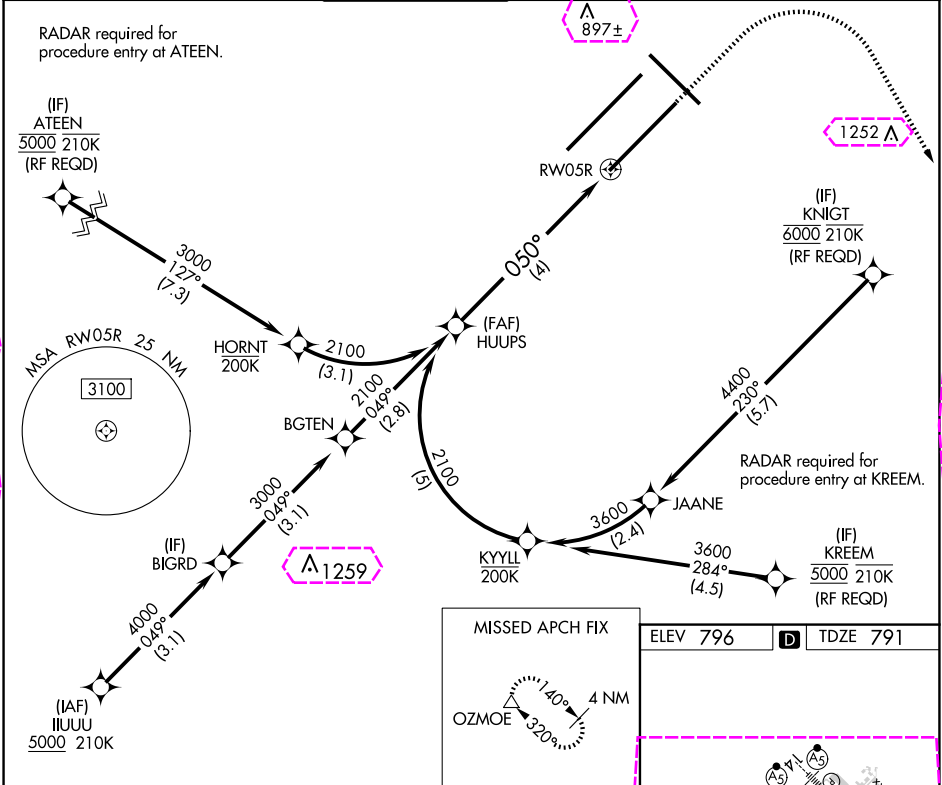
INDIANAPOLIS INTL (IND)

For uncompensated Baro-VNAV systems, procedure NA below -18°C (0°F) or above 54°C (130°F). GPS required. Simultaneous approach authorized, for arrivals from IUUU only.

ALSF-2

MISSED APPROACH: Climb to 1500, then climbing right turn to 3000 direct OZMOE and hold.

D-ATIS	INDIANAPOLIS APP CON	INDY TOWER	GND CON	CLNC DEL	CPDLC
134.25	128.175 317.8	120.9 251.1	121.9	128.75 251.1	



VGSI and RNAV glidepath not coincident (VGSI Angle 3.00/TCH 71).

HUUPS 2100

2100

GP 3.00° TCH 50

050°

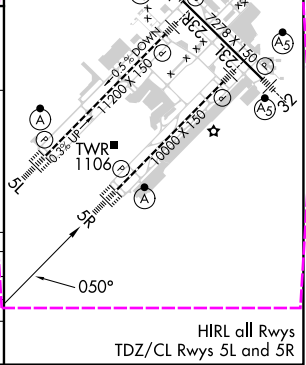
RW05R

4 NM

See planview for multiple IF locations.

CATEGORY	A	B	C	D
RNP 0.11 DA	1174/45	383 (400-7%)		
RNP 0.30 DA	1271/60	480 (500-1¼)		

AUTHORIZATION REQUIRED



EC-2, 10 JUL 2025 to 07 AUG 2025

EC-2, 10 JUL 2025 to 07 AUG 2025

INDIANAPOLIS, INDIANA

AL-203 (FAA)

25219

APP CRS	Rwy Ldg	10000
050°	TDZE	791
	Apt Elev	796

RNAV (RNP) Z RWY 5R

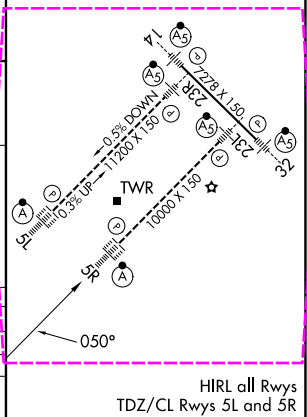
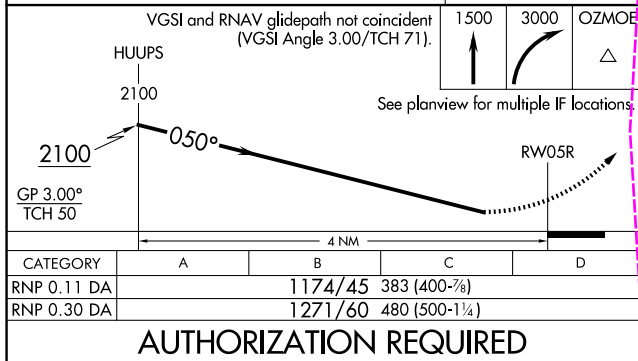
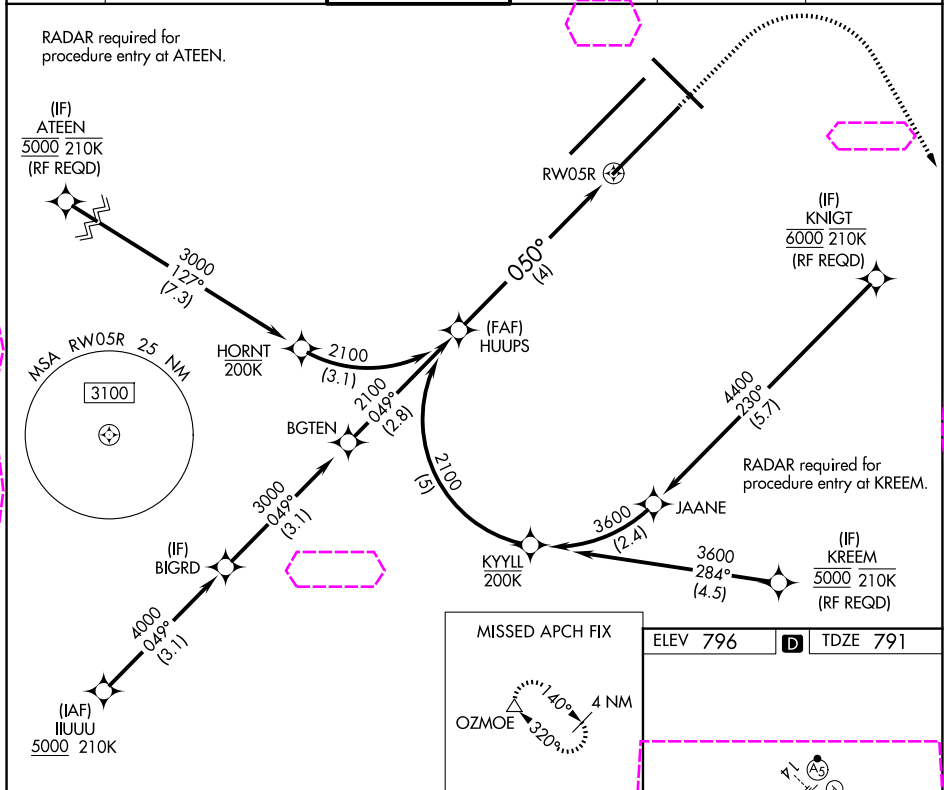
INDIANAPOLIS INTL (IND)

For uncompensated Baro-VNAV systems, procedure NA below -18°C (0°F) or above 54°C (130°F). GPS required. Simultaneous approach authorized, for arrivals from IUUU only.

ALSF-2

MISSED APPROACH:
Climb to 1500, then climbing right turn to 3000 direct OZMOE and hold.

D-ATIS	INDIANAPOLIS APP CON	INDY TOWER	GND CON	CLNC DEL	CPDLC
134.25	128.175 317.8	120.9 251.1	121.9	128.75 251.1	



EC-2, 07 AUG 2025 to 04 SEP 2025

EC-2, 07 AUG 2025 to 04 SEP 2025

INDIANAPOLIS, INDIANA

Amdt 2A 22JUN17

39°43'N-86°18'W

INDIANAPOLIS INTL (IND)
RNAV (RNP) Z RWY 5R