

INDIANAPOLIS, INDIANA

AL-203 (FAA)

24361

APP CRS	Rwy Idg	11200
050°	TDZE	747
	Apt Elev	796

RNAV (RNP) Z RWY 5L

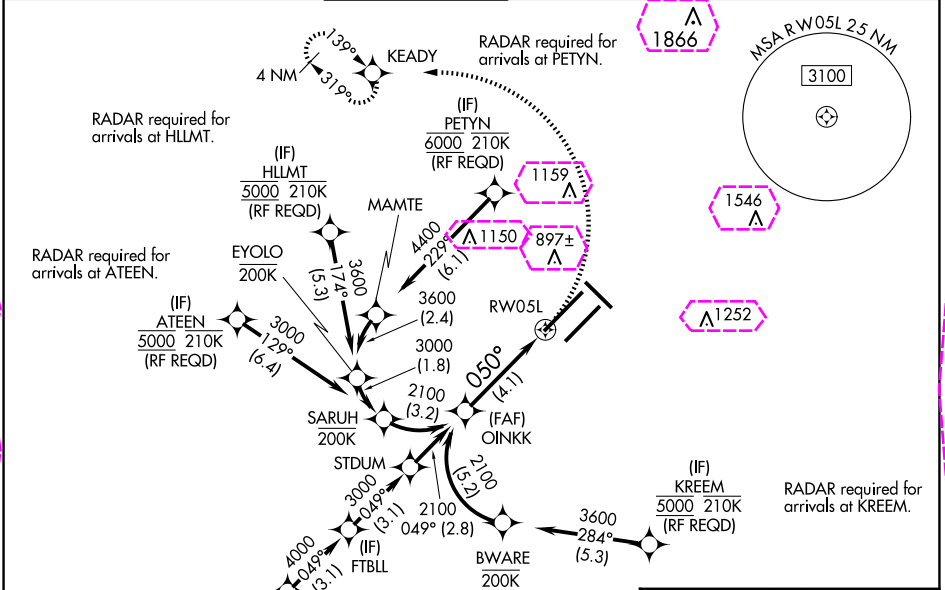
INDIANAPOLIS INTL (IND)

For uncompensated Baro-VNAV systems, procedure NA below -18°C (0°F) or above 54°C (130°F). GPS required. For inop ALS, increase RNP 0.30 all Cats visibility to 1½ SM. Simultaneous approach authorized.

ALSF-2

MISSED APPROACH:
Climbing left turn to 3000 direct KEADY and hold.

D-ATIS	INDIANAPOLIS APP CON	INDY TOWER	GND CON	CLNC DEL	CPDLC
134.25	128.175 317.8	120.9 251.1	121.9	128.75 251.1	



ELEV 796 TDZE 747

VGSI and RNAV glidepath not coincident (VGSI Angle 3.00/TCH 74).

3000 KEADY

2100

GP 3.00° TCH 53

See planview for multiple IF locations.

4.1 NM

CATEGORY	A	B	C	D
RNP 0.30 DA		1197/60	450 (500-1¼)	

AUTHORIZATION REQUIRED

HIRL all Rwys
TDZ/CL Rwys 5L and 5R

EC-2, 10 JUL 2025 to 07 AUG 2025

EC-2, 10 JUL 2025 to 07 AUG 2025

INDIANAPOLIS, INDIANA

Amdt 2 10NOV16

39°43'N-86°18'W

INDIANAPOLIS INTL (IND)

RNAV (RNP) Z RWY 5L

RNAV (RNP) Z RWY 5L