

EC-2, 10 JUL 2025 to 07 AUG 2025

INDIANAPOLIS, INDIANA

AL-203 (FAA)

25219

APP CRS	Rwy Ldg	7278
320°	TDZE	793
	Apt Elev	796

RNAV (RNP) Z RWY 32

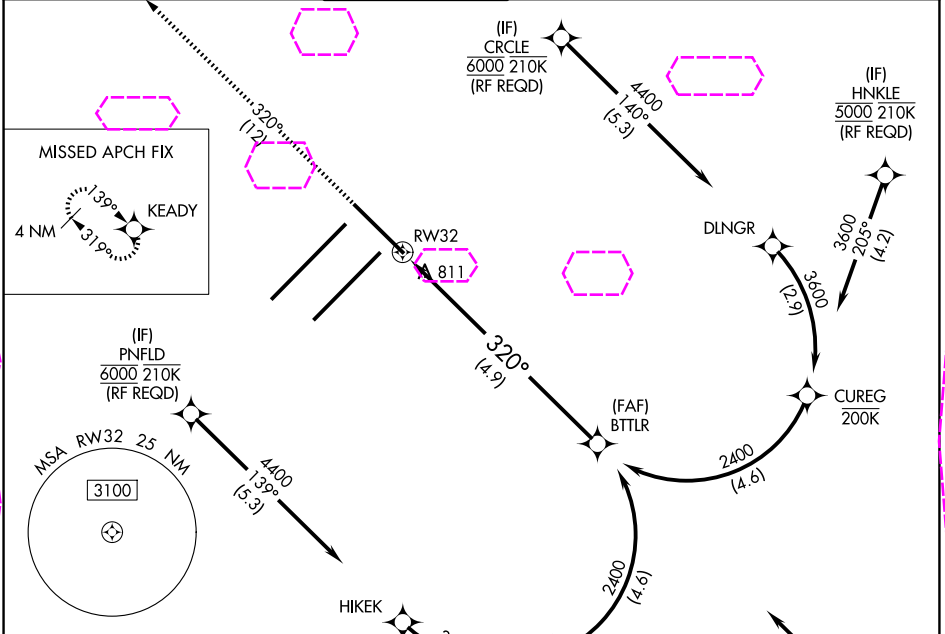
INDIANAPOLIS INTL (IND)

For uncompensated Baro-VNAV systems, procedure NA below -18°C (2°F) or above 54°C (130°F). GPS required.

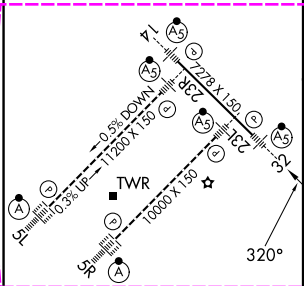
MALSR

MISSED APPROACH: Climb to 3000 on track 320° to KEADY and hold.

D-ATIS	INDIANAPOLIS APP CON	INDY TOWER	GND CON	CLNC DEL	CPDLC
134.25	128.175 317.8	120.9 251.1	121.9	128.75 251.1	



ELEV	796	TDZE	793
------	-----	------	-----



3000 KEADY

↑ 320°

VGSI and RNAV glidepath not coincident (VGSI Angle 3.00/TCH 73).

BTTLR

2400

2400

320°

RW32

See planview for multiple IF locations.

4.9 NM

GP 3.00° TCH 53

CATEGORY	A	B	C	D
RNP 0.19 DA		1134/30	341 (400-%)	
RNP 0.30 DA		1196/45	403 (400-%)	

HIRL all Rwys
TDZ/CL Rwys 5L and 5R

AUTHORIZATION REQUIRED

INDIANAPOLIS, INDIANA
Amdt 2 10NOV16

39°43'N-86°18'W

INDIANAPOLIS INTL (IND)
RNAV (RNP) Z RWY 32

EC-2, 07 AUG 2025 to 04 SEP 2025

EC-2, 07 AUG 2025 to 04 SEP 2025