

INDIANAPOLIS, INDIANA

AL-203 (FAA)

24361

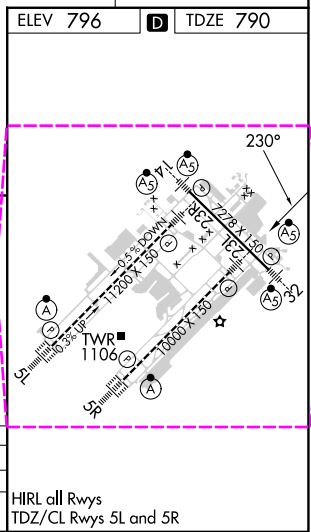
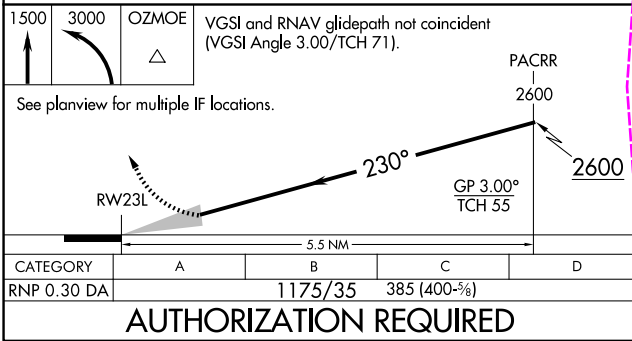
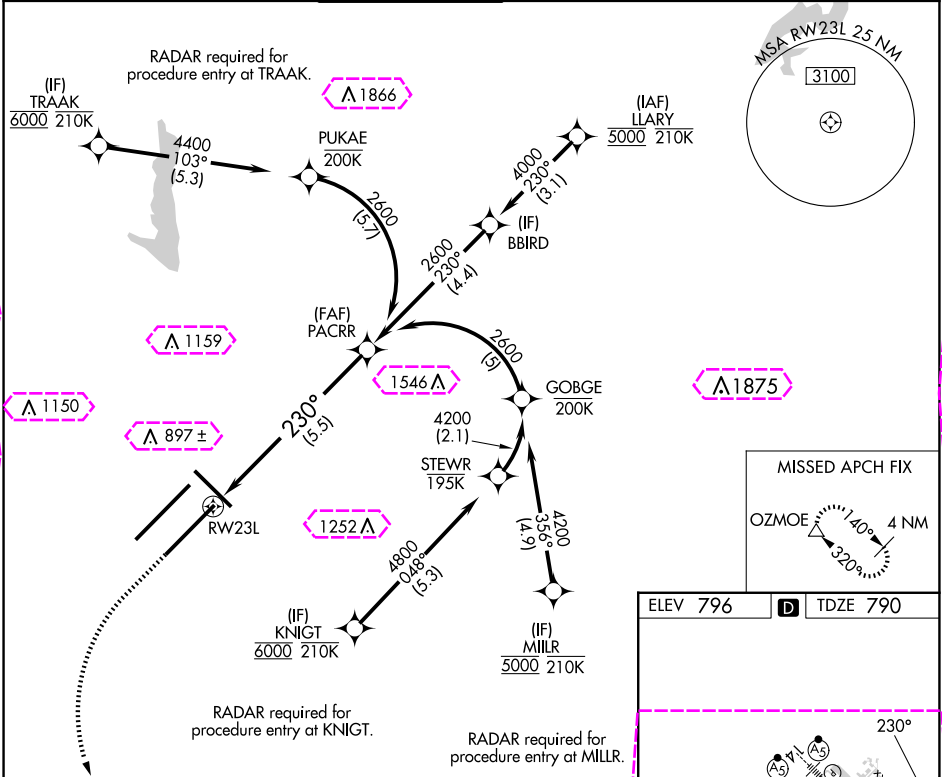
APP CRS	Rwy Idg	10000
230°	TDZE	790
	Apt Elev	796

RNAV (RNP) Z RWY 23L

INDIANAPOLIS INTL (IND)

RNP AR APCH - GPS.	MALSR	MISSED APPROACH: Climb to 1500, then climbing left turn to 3000 direct OZMOE and hold.
For uncompensated Baro-VNAV systems, procedure NA below -20°C or above 54°C. Simultaneous approach authorized for arrivals from LLRY only.		

D-ATIS	INDIANAPOLIS APP CON	INDY TOWER	GND CON	CLNC DEL	CPDLC
134.25	128.175 317.8	120.9 251.1	121.9	128.75 251.1	



APP CRS 230°	Rwy Ldg 10000 TDZE 790 Apt Elev 796
------------------------	--

RNAV (RNP) Z RWY 23L
INDIANAPOLIS INTL (IND)

RNP AR APCH - GPS.	
--------------------	--



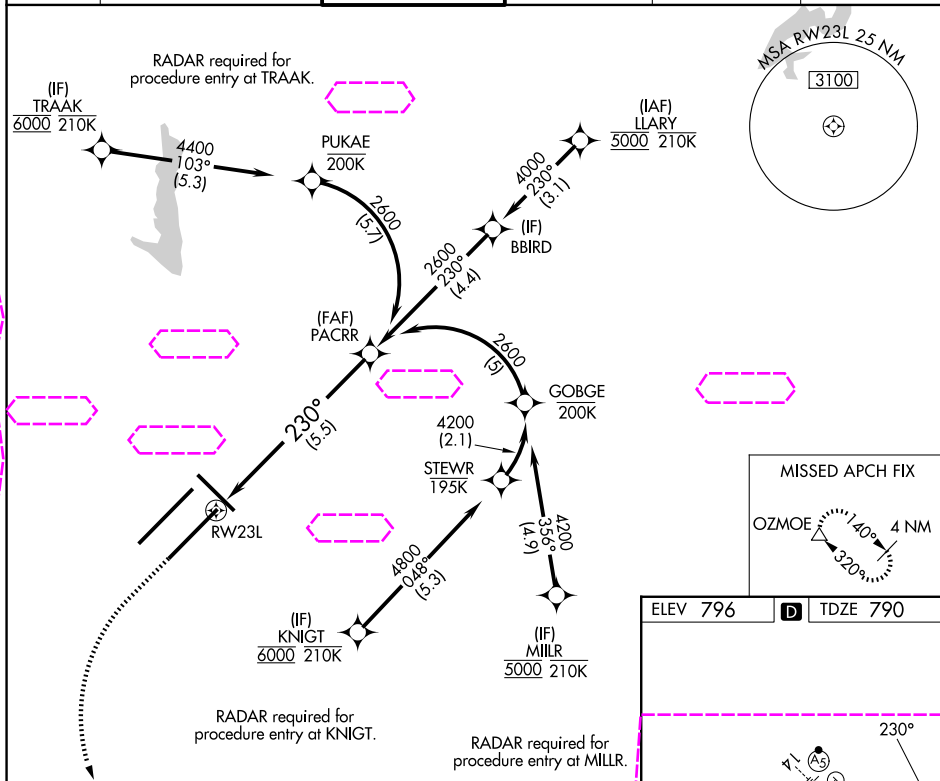
For uncompensated Baro-VNAV systems, procedure NA below -20°C or above 54°C. Simultaneous approach authorized for arrivals from LLARY only.




MALSR



MISSED APPROACH: Climb to 1500, then climbing left turn to 3000 direct OZMOE and hold.

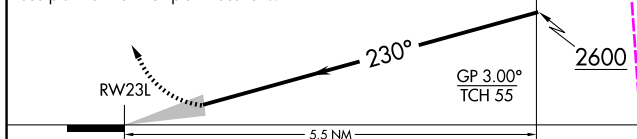
D-ATIS 134.25	INDIANAPOLIS APP CON 128.175 317.8	INDY TOWER 120.9 251.1	GND CON 121.9	CLNC DEL 128.75 251.1	CPDLC
------------------	---------------------------------------	---------------------------	------------------	--------------------------	-------



1500	3000	OZMOE
		

VGSI and RNAV glidepath not coincident (VGSI Angle 3.00/TCH 71).

See planview for multiple IF locations.



CATEGORY	A	B	C	D
RNP 0.30 DA		1175/35	385 (400- ⁵ / ₈)	

AUTHORIZATION REQUIRED

HIRL all Rwy's
TDZ/CL Rwy's 5L and 5R

INDIANAPOLIS, INDIANA

Amdt 3 25JAN24

39°43'N-86°18'W

INDIANAPOLIS INTL (IND)

RNAV (RNP) Z RWY 23L