

EC-2, 10 JUL 2025 to 07 AUG 2025

INDIANAPOLIS, INDIANA

AL-203 (FAA)

25219

LOC/DME I-IND 111.75 Chan 54 (Y)	APP CRS 050°	Rwy Ldg 11200 TDZE 747 Apt Elev 796
--	------------------------	--

ILS or LOC RWY 5L

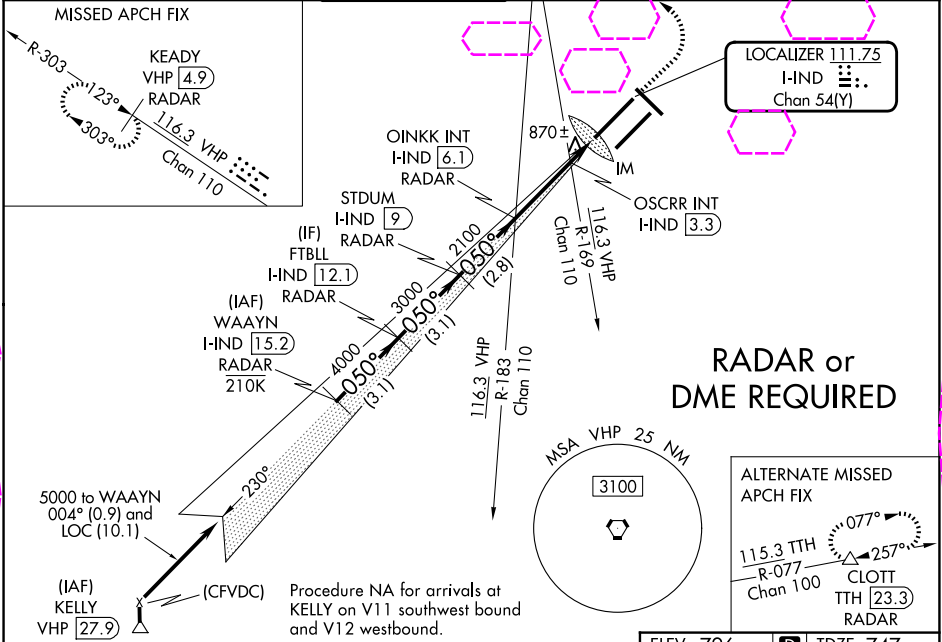
INDIANAPOLIS INTL (IND)

⚠ Simultaneous approach authorized. DME or RADAR required.
For inop ALS, increase S-LOC 5L Cat C/D visibility to 1 1/2 SM.
OSCRR fix minimums: For inop ALS, increase S-LOC 5L Cat C/D visibility to RVR 5500.

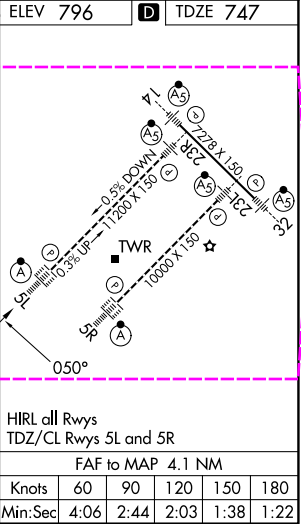
ALSF-2
A

MISSED APPROACH: Climb to 1700 then climbing left turn to 3000 direct VHP VORTAC then on VHP VORTAC R-303 to KEADY VHP 4.9 DME/RADAR and hold.

D-ATIS 134.25	INDIANAPOLIS APP CON 128.175 317.8	INDY TOWER 120.9 251.1	GND CON 121.9	CLNC DEL 128.75 251.1	CPDLC
-------------------------	--	----------------------------------	-------------------------	---------------------------------	-------



VGSI and ILS glidepath not coincident (VGSI Angle 3.00/TCH 74).				
WAAYN I-IND (15.2) RADAR	FTBLL I-IND (12.1) RADAR	STDUM I-IND (9) RADAR	OINKK INT I-IND (6.1) RADAR	OSCRR INT I-IND (3.3) RADAR
5000	4000	3000	2100	1220
GS 3.00° TCH 53				
3.1 NM	3.1 NM	2.8 NM	2.8 NM	1.1 NM
CATEGORY	A	B	C	D
S-ILS 5L	947/18		200 (200-1/2)	
S-LOC 5L	1220/24	473 (500-1/2)	1220/50	473 (500-1)
CIRCLING	1420-1	624 (700-1)	1420-1 3/4 624 (700-1 3/4)	1560-2 1/2 764 (800-2 1/2)
OSCRR FIX MINIMUMS (DUAL VOR RECEIVERS or DME REQUIRED)				
S-LOC 5L	1120/24	373 (400-1/2)	1120/35	373 (400-3/4)
CIRCLING	1420-1	624 (700-1)	1420-1 3/4 624 (700-1 3/4)	1560-2 1/2 764 (800-2 1/2)



INDIANAPOLIS, INDIANA
Amdt 5A 08OCT20

39°43'N-86°18'W

INDIANAPOLIS INTL (IND)

ILS or LOC RWY 5L

EC-2, 07 AUG 2025 to 04 SEP 2025

EC-2, 07 AUG 2025 to 04 SEP 2025