

INDIANAPOLIS, INDIANA

AL-203 (FAA)

24361

LOC I-COA 110.5	APP CRS 320°	Rwy Idg 7278 TDZE 793 Apt Elev 796
---------------------------	------------------------	--

ILS or LOC RWY 32

INDIANAPOLIS INTL (IND)

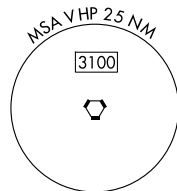
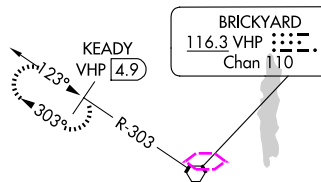
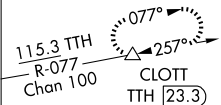
DME required.
#RVR 1800 authorized with the use of FD or AP or HUD to DA.



MISSED APPROACH: Climb to 1500 then climbing right turn to 3000 direct VHP VORTAC and on VHP R-303 to KEADY/VHP 4.9 DME and hold.

D-ATIS 134.25	INDIANAPOLIS APP CON 128.175 317.8	INDY TOWER 120.9 251.1	GND CON 121.9	CLNC DEL 128.75 251.1	CPDLC
-------------------------	--	----------------------------------	-------------------------	---------------------------------	-------

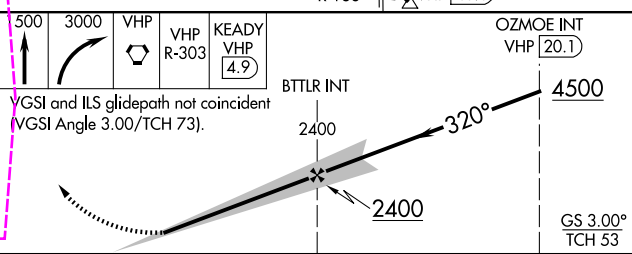
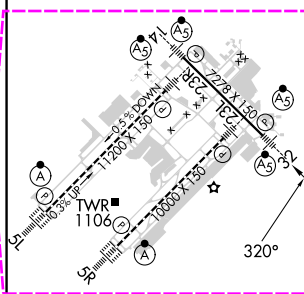
ALTERNATE MISSED
APCH FIX



LOCALIZER 110.5
I-COA

Procedure NA for arrivals at DECEE
on V128 southeast bound.

ELEV 796 TDZE 793



HIRL all Rwy					
TDZ/CL Rwy 5L and 5R					
FAF to MAP 4.9 NM					
Knots	60	90	120	150	180
Min:Sec	4:54	3:16	2:27	1:58	1:38

CATEGORY	A	B	C	D
S-ILS 32	# 993/24 200 (200-½)			
S-LOC 32	1280/24 487 (500-½)		1280/50 487 (500-1)	
CIRCLING	1420-1 624 (700-1)		1420-1¾ 624 (700-1¾) 1560-2½ 764 (800-2½)	

INDIANAPOLIS, INDIANA

Amdt 21A 22JUN17

39°43'N-86°18'W

ILS or LOC RWY 32

INDIANAPOLIS INTL (IND)

EC-2, 10 JUL 2025 to 07 AUG 2025

EC-2, 10 JUL 2025 to 07 AUG 2025

INDIANAPOLIS, INDIANA

AI-203 (FAA)

25219

LOC I-COA 110.5	APP CRS 320°	Rwy Ldg TDZE 7278 Apt Elev 796
---------------------------	------------------------	--

ILS or LOC RWY 32

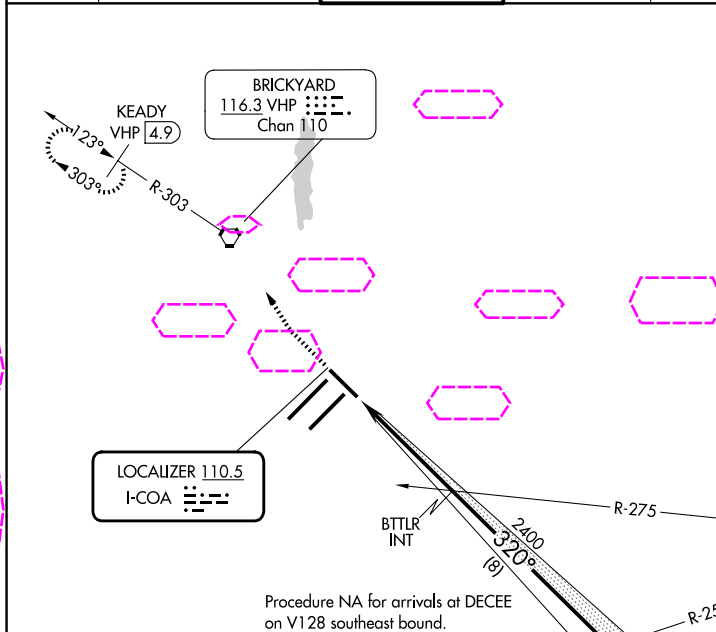
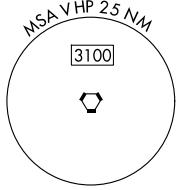
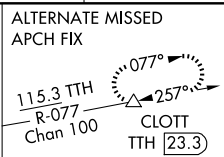
INDIANAPOLIS INTL (IND)

- DME required.
- #RVR 1800 authorized with the use of FD or AP or HUD to DA.



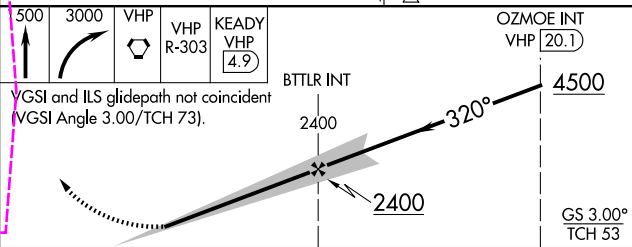
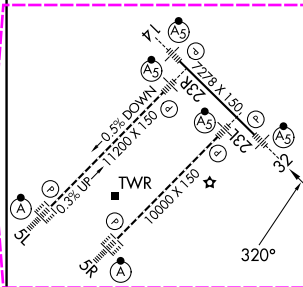
MISSED APPROACH: Climb to 1500 then climbing right turn to 3000 direct VHP VORTAC and on VHP R-303 to KEADY/ VHP 4.9 DME and hold.

D-ATIS 134.25	INDIANAPOLIS APP CON 128.175 317.8	INDY TOWER 120.9 251.1	GND CON 121.9	CLNC DEL 128.75 251.1	CPDLC
-------------------------	--	----------------------------------	-------------------------	---------------------------------	-------



Procedure NA for arrivals at DECEE on V128 southeast bound.

ELEV 796	D	TDZE 793
-----------------	----------	-----------------



VGSI and ILS glidepath not coincident (VGSI Angle 3.00/TCH 73).

HIRL all Rwys
TDZ/CL Rwys 5L and 5R

FAF to MAP 4.9 NM

Knots	60	90	120	150	180
Min:Sec	4:54	3:16	2:27	1:58	1:38

CATEGORY	A	B	C	D
S-ILS 32	# 993/24 200 (200-½)			
S-LOC 32	1280/24 487 (500-½)		1280/50 487 (500-1)	
CIRCLING	1420-1 624 (700-1)		1420-1¾ 624 (700-1¾) 1560-2½ 764 (800-2½)	

INDIANAPOLIS, INDIANA
Amdt 21A 22JUN17

39°43'N-86°18'W

ILS or LOC RWY 32

EC-2, 07 AUG 2025 to 04 SEP 2025

EC-2, 07 AUG 2025 to 04 SEP 2025