

LOC/DME I-ZUK 111.75 Chan 54 (Y)	APP CRS 230°	Rwy Idg 1200 TDZE 783 Apt Elev 796
--	------------------------	---

ILS or LOC RWY 23R
INDIANAPOLIS INTL (IND)

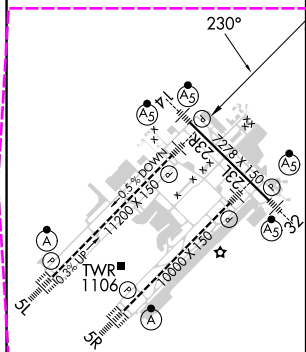
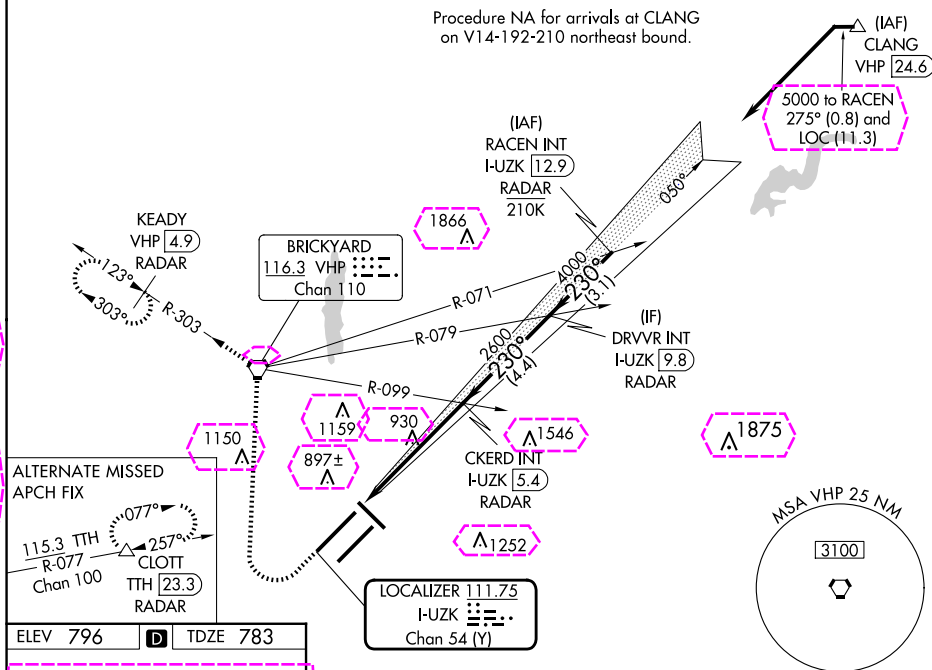
T Simultaneous approach authorized.
A DME or RADAR required.
 **RVR 1800 authorized with use of FD or AP or HUD to DA.


MALSP

MISSED APPROACH: Climb to 1500 then climbing right turn to 3000 direct VHP VORTAC and on VHP R-303 to KEADY/VHP 4.9 DME/RADAR and hold

D-ATIS 134.25	INDIANAPOLIS APP CON 128.175 317.8	INDY TOWER 120.9 251.1	GND CON 121.9	CLNC DEL 128.75 251.1	CPDLC
-------------------------	--	----------------------------------	-------------------------	---------------------------------	-------

Procedure NA for arrivals at CLANG
on V14-192-210 northeast bound.



<div style="display: flex; justify-content: space-around;"> <div>500 ↑</div> <div>3000 ↗</div> <div>VHP R-303 </div> <div>KEADY VHP <u>4.9</u> RADAR</div> </div>	VGSI and ILS glidepath not coincident (VGSI Angle 3.00/TCH 71).			RACEN INT I-UZK <u>12.9</u> RADAR
*LOC only.	I-UZK DME ANTENNA *I-UZK I-UZK <u>0.2</u> 1 NM	CKERD INT I-UZK <u>5.4</u> RADAR 2600	DRVVR INT I-UZK <u>9.8</u> RADAR 4000	230° → 5000 GS 3.00° TCH 55
CATEGORY	A	B	C	D
S-ILS 23R**	983/24 200 (200-½)			
S-LOC 23R	1180/24 397 (400-½)	1180/35 397 (400-¾)		
C CIRCLING	1420-1 624 (700-1)	1420-1¾ 624 (700-1¾)	1560-2½ 764 (800-2½)	

INDIANAPOLIS, INDIANA
Amdt 6 29MAR18

39°43'N-86°18'W

INDIANAPOLIS INTL (IND)
ILS or LOC RWY 23R

EC-2, 10 JUL 2025 to 07 AUG 2025

EC-2, 10 JUL 2025 to 07 AUG 2025

INDIANAPOLIS, INDIANA

AL-203 (FAA)

25219

LOC/DME I-UZK 111.75 Chan 54 (Y)	APP CRS 230°	Rwy Ldg TDZE 783 Apt Elev 796
--	------------------------	---

ILS or LOC RWY 23R

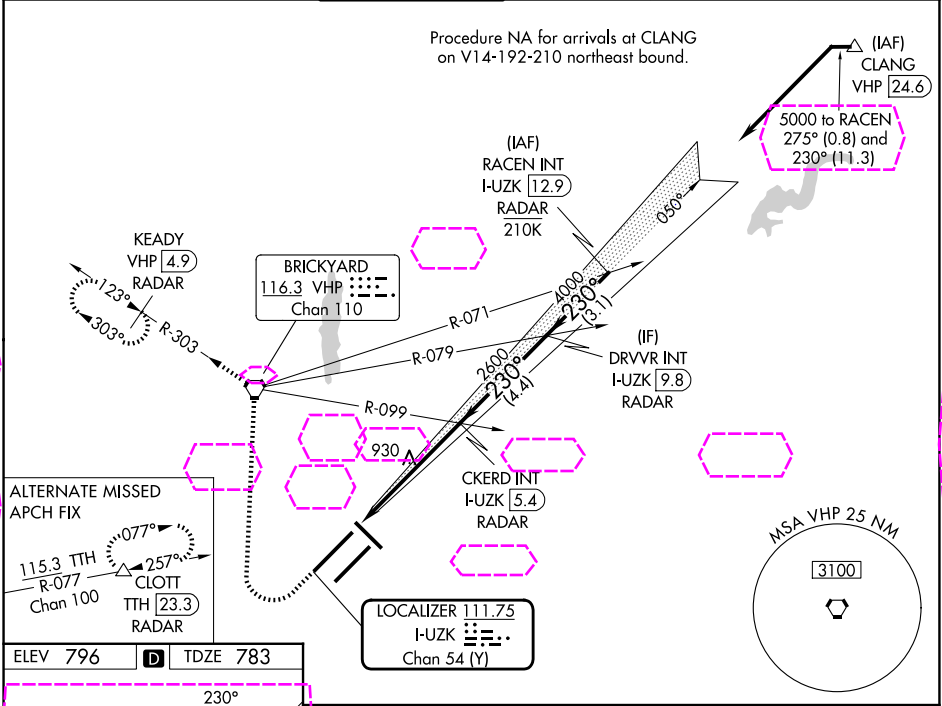
INDIANAPOLIS INTL (IND)

Simultaneous approach authorized.
DME or RADAR required.
**RVR 1800 authorized with use of FD or AP or HUD to DA.

MALSR

MISSED APPROACH: Climb to 1500 then climbing right turn to 3000 direct VHP VORTAC and on VHP R-303 to KEADY/VHP 4.9 DME/RADAR and hold.

D-ATIS 134.25	INDIANAPOLIS APP CON 128.175 317.8	INDY TOWER 120.9 251.1	GND CON 121.9	CLNC DEL 128.75 251.1	CPDLC
-------------------------	--	----------------------------------	-------------------------	---------------------------------	-------



ELEV 796	D	TDZE 783
HIRL all Rwys TDZ/CL Rwys 5L and 5R FAF to MAP 5.5 NM		
Knots	60	90 120 150 180
Min:Sec	5:30	3:40 2:45 2:12 1:50
CIRCLING		

INDIANAPOLIS, INDIANA
Amdt 6 29MAR18

39°43'N-86°18'W

ILS or LOC RWY 23R

EC-2, 07 AUG 2025 to 04 SEP 2025

EC-2, 07 AUG 2025 to 04 SEP 2025