



INDIANAPOLIS, INDIANA

AI-203 (FAA)

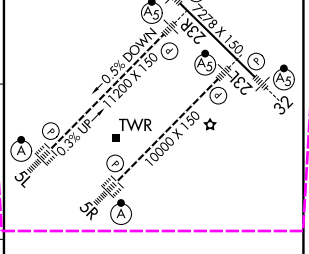
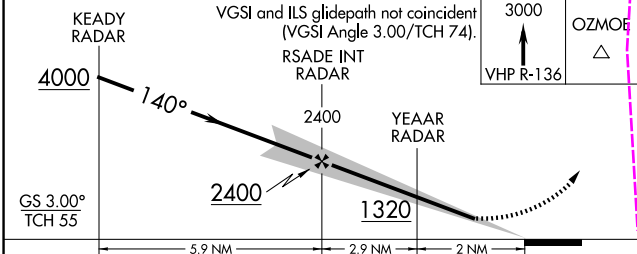
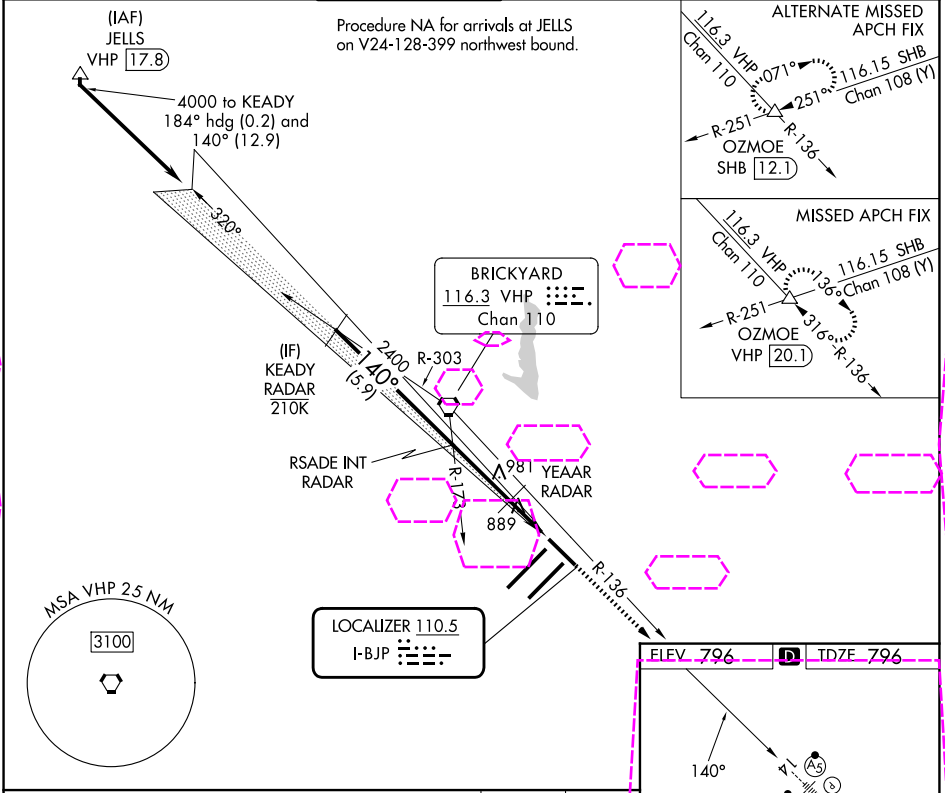
25219

LOC I-BJP <b>110.5</b>	APP CRS <b>140°</b>	Rwy Ldg <b>7278</b> TDZE <b>796</b> Apt Elev <b>796</b>
---------------------------	------------------------	--

ILS or LOC RWY 14  
INDIANAPOLIS INTL (IND)

RADAR required. ▼ For inop ALS, increase S-LOC 14 Cat C and D visibility to RVR 5500. ▲ *RVR 1800 authorized with use of FD or AP or HUD to DA.			MALSR AS	MISSED APPROACH: Climb to 3000 on VHP R-136 to OZMOE INT/ VHP 20.1 DME and hold.
---	--	--	-------------	--

D-ATIS <b>134.25</b>	INDIANAPOLIS APP CON <b>128.175 317.8</b>	INDY TOWER <b>120.9 251.1</b>	GND CON <b>121.9</b>	CLNC DEL <b>128.75 251.1</b>	CPDLC
-------------------------	--	----------------------------------	-------------------------	---------------------------------	-------



CATEGORY	A	B	C	D	HIRL all Rwy's TDZ/CL Rwy's 5L and 5R
S-ILS 14 *	996/24 200 (200-½)				FAF to MAP 4.9 NM
S-LOC 14	1140/24 344 (400-½)	1140/30 344 (400-½)	1560-2½ 764 (800-2½)		
CIRCLING	1420-1 624 (700-1)	1420-1¾ 624 (700-1¾)			
Knots	60	90	120	150	180
Min:Sec	4:54	3:16	2:27	1:58	1:38

INDIANAPOLIS, INDIANA  
Amdt 7A 07OCT21

39°43'N-86°18'W

INDIANAPOLIS INTL (IND)  
ILS or LOC RWY 14

EC-2, 07 AUG 2025 to 04 SEP 2025

EC-2, 07 AUG 2025 to 04 SEP 2025