

INDIANAPOLIS, INDIANA

AL-203 (FAA)

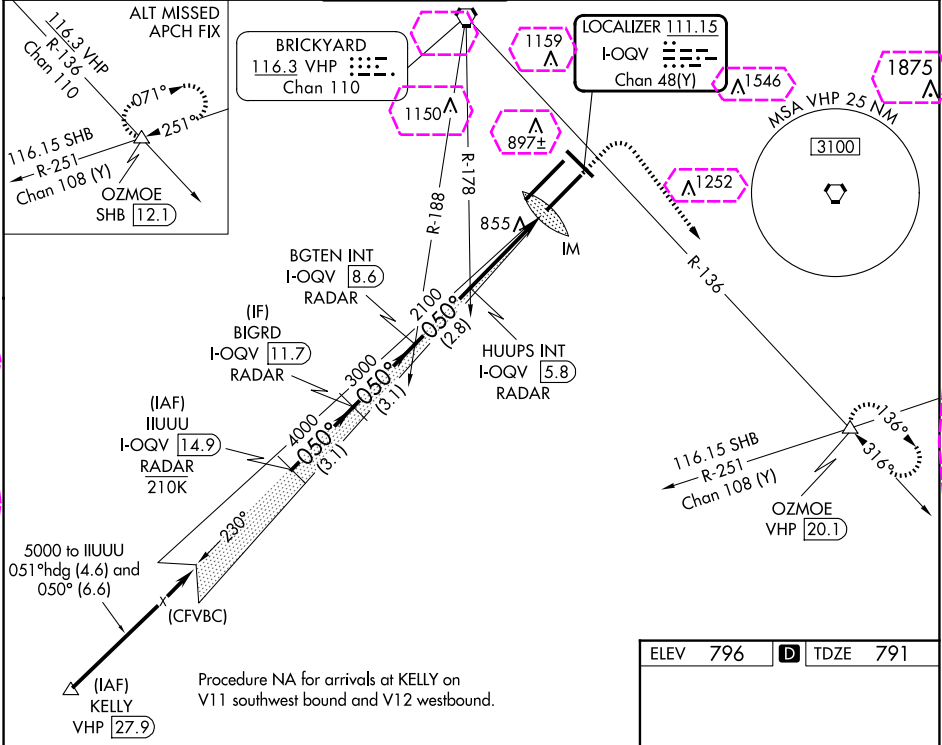
24361

LOC/DME I-QQV <b>111.15</b> Chan <b>48(Y)</b>	APP CRS <b>050°</b>	Rwy ldg <b>10000</b> TDZE <b>791</b> Apt Elev <b>796</b>
---	------------------------	--

ILS RWY 5R (SA CAT I)  
INDIANAPOLIS INTL (IND)

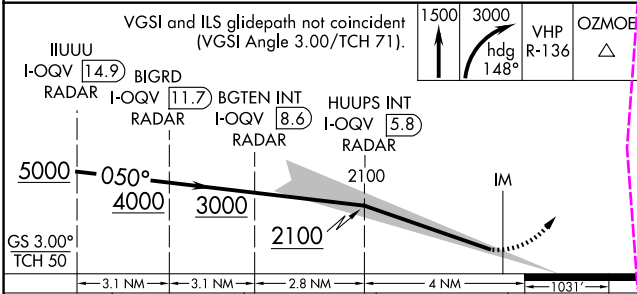
<b>⚠</b> DME or RADAR required. Simultaneous approach authorized. Requires specific OPSPEC, MSPEC, or LOA approval and use of HUD to DH.	ALSF-2 	MISSED APPROACH: Climb to 1500 then climbing right turn to 3000 on heading 148° and on VHP VORTAC R-136 to OZMOE INT/VHP 20.1 DME and hold.
--	------------	---

D-ATIS <b>134.25</b>	INDIANAPOLIS APP CON <b>128.175 317.8</b>	INDY TOWER <b>120.9 251.1</b>	GND CON <b>121.9</b>	CLNC DEL <b>128.75 251.1</b>	CPDLC
-------------------------	--	----------------------------------	-------------------------	---------------------------------	-------

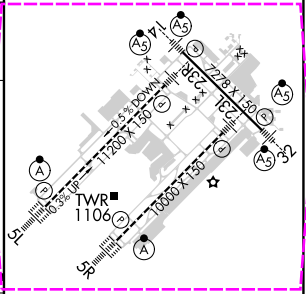


EC-2, 10 JUL 2025 to 07 AUG 2025

EC-2, 10 JUL 2025 to 07 AUG 2025



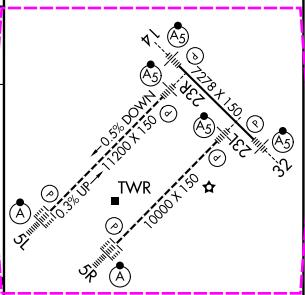
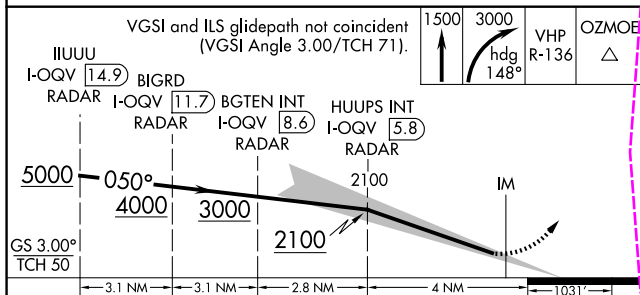
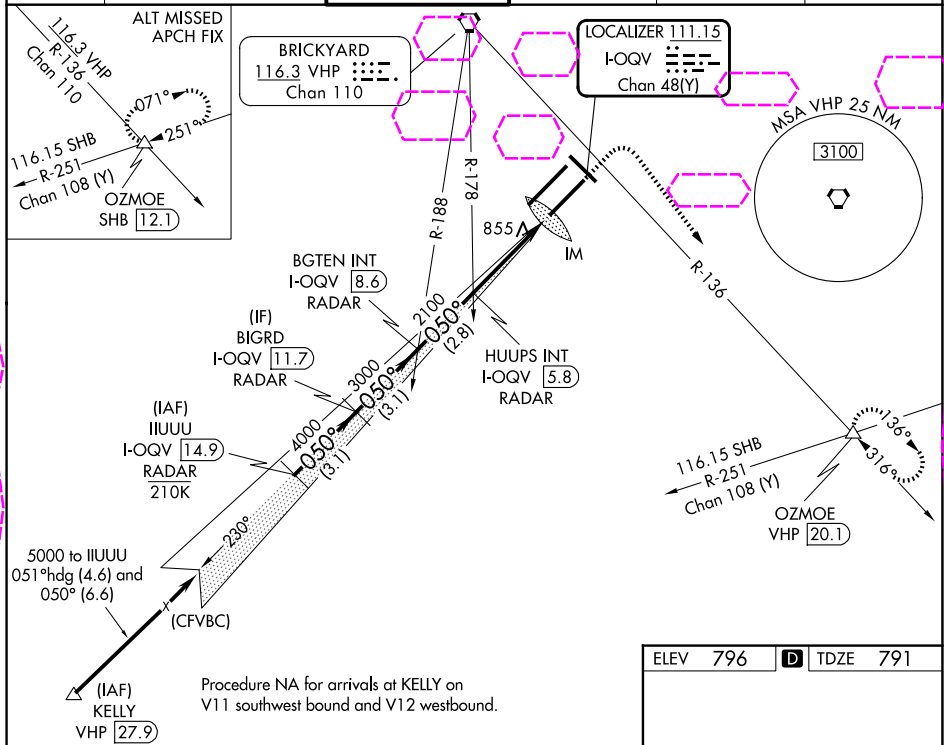
ELEV 796	<b>D</b> TDZE 791
----------	-------------------



LOC/DME I-QQV <b>111.15</b> Chan <b>48</b> (Y)	APP CRS <b>050°</b>	Rwy Ldg <b>10000</b> TDZE <b>791</b> Apt Elev <b>796</b>
--	------------------------	--

ILS RWY 5R (SA CAT I)  
INDIANAPOLIS INTL (IND)

<div><div><div></div><div></div></div><div>DME or RADAR required. Simultaneous approach authorized. Requires specific OPSPEC, MSPEC, or LOA approval and use of HUD to DH.</div></div>			<div><div><div></div><div></div></div><div>ALSIF-2</div></div>		MISSED APPROACH: Climb to 1500 then climbing right turn to 3000 on heading 148° and on VHP VORTAC R-136 to OZMOE INT/VHP 20.1 DME and hold.		
D-ATIS 134.25	INDIANAPOLIS APP CON 128.175 317.8		INDY TOWER 120.9 251.1		GND CON 121.9	CLNC DEL 128.75 251.1	CPDLC



CATEGORY	A	B	C	D
S-ILS 5R	RA 163/14 150 DA 941			

SA CATEGORY I ILS SPECIAL AIRCREW  
& AIRCRAFT CERTIFICATION REQUIRED

HIRL all Rwys  
TDZ/CL Rwys 5L and 5R

EC-2, 07 AUG 2025 to 04 SEP 2025

EC-2, 07 AUG 2025 to 04 SEP 2025