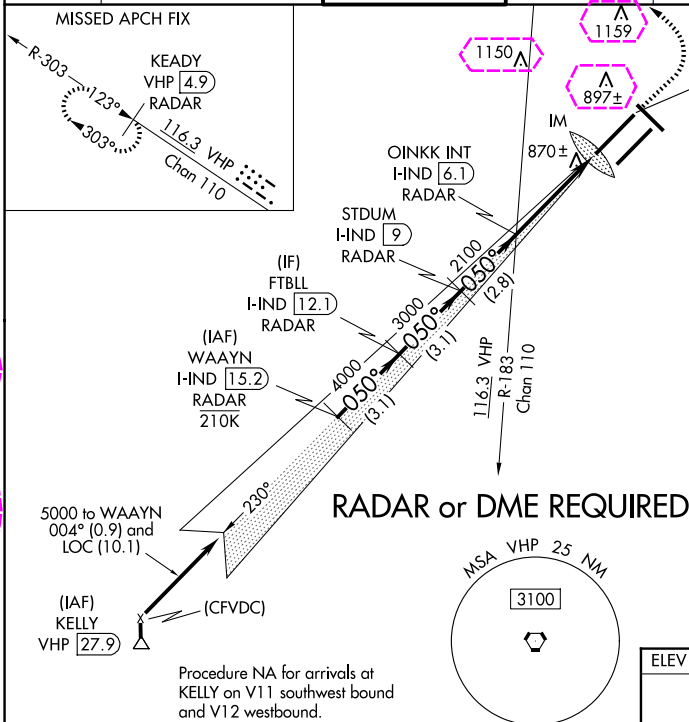


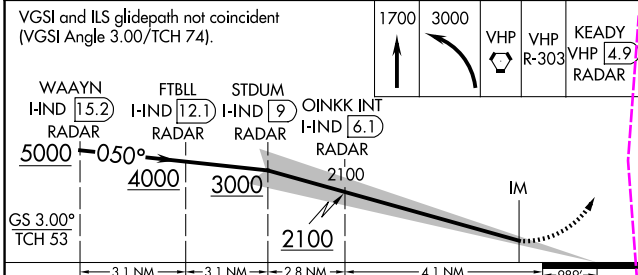
ILS RWY 5L (SA CAT I)  
INDIANAPOLIS INTL (IND)

**MISSED APPROACH:** Climb to 1700 then climbing left turn to 3000 direct VHP VORTAC then on VHP VORTAC R-303 to KEADY/VHP 4.9 DME/RADAR and hold.



|          |          |          |
|----------|----------|----------|
| ELEV 796 | <b>D</b> | TDZE 747 |
|----------|----------|----------|

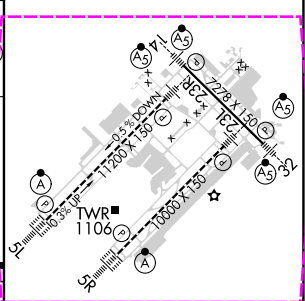
VGSI and ILS glidepath not coincident  
(VGSI Angle 3.00/TCH 74).



| CATEGORY | A | B | C | D |
|----------|---|---|---|---|
|----------|---|---|---|---|

S-ILS 5L RA 178/14 150 DA 897

SA CATEGORY I ILS - SPECIAL AIRCREW  
& AIRCRAFT CERTIFICATION REQUIRED



HIRL all Rwys  
TDZ/CL Rwys 5L and 5R

EC-2, 10 JUL 2025 to 07 AUG 2025

EC-2, 07 AUG 2025 to 04 SEP 2025.