

LOC/DME I-IND <b>111.75</b> Chan <b>54</b> (Y)	APP CRS <b>050°</b>	Rwy Idg <b>1200</b> TDZE <b>747</b> Apt Elev <b>796</b>
--	------------------------	---

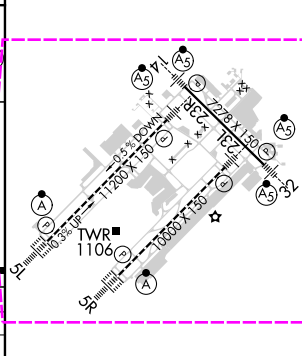
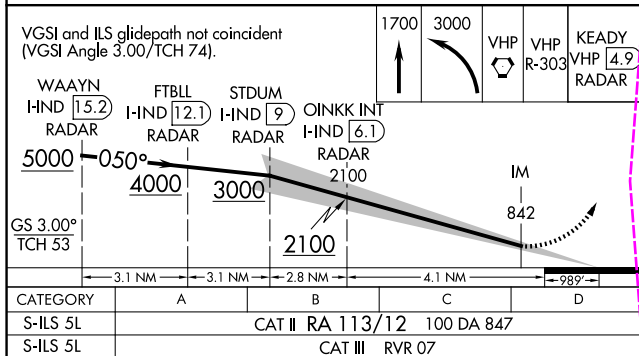
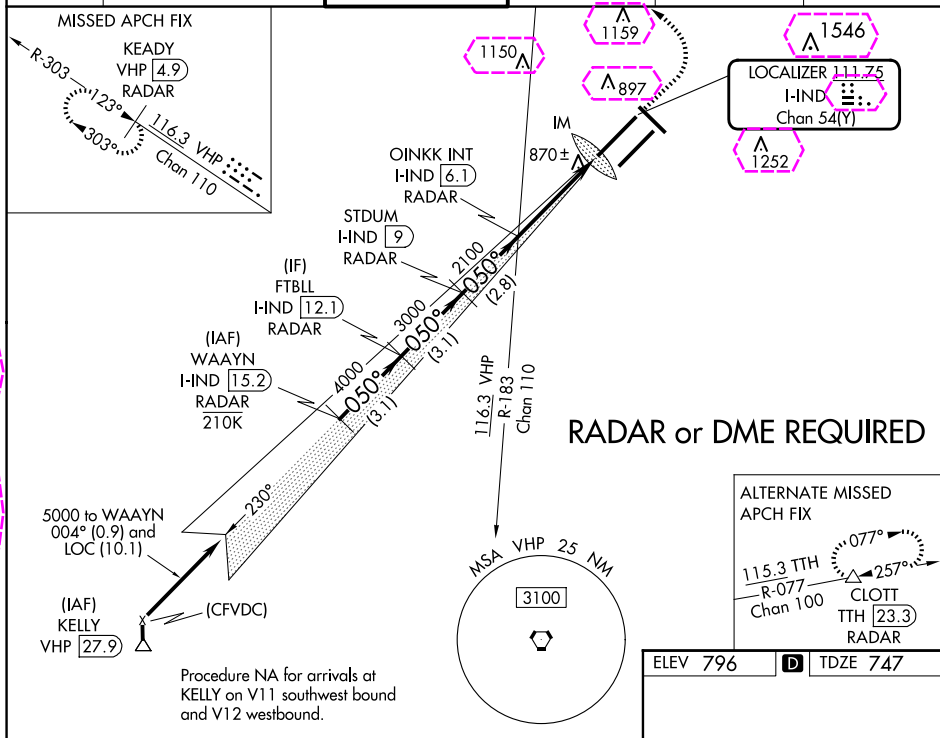
ILS RWY 5L (CAT II & III)  
INDIANAPOLIS INTL (IND)

**T** Simultaneous approach authorized.  
**A** CAT III: Localizer not suitable for electronic rollout guidance. DME or RADAR required.

ALSF-2

**MISSED APPROACH:** Climb to 1700 then climbing left turn to 3000 direct VHP VORTAC then on VHP VORTAC R-303 to KEADY/VHP 4.9 DME/RADAR and hold.

D-ATIS <b>134.25</b>	INDIANAPOLIS APP CON <b>128.175 317.8</b>	INDY TOWER <b>120.9 251.1</b>	GND CON <b>121.9</b>	CLNC DEL <b>128.75 251.1</b>	CPDLC
-------------------------	--	----------------------------------	-------------------------	---------------------------------	-------



## CATEGORY II & III ILS - SPECIAL AIRCREW & AIRCRAFT CERTIFICATION REQUIRED

HIRL all Rwy's  
TDZ/CL Rwy's 5L and 5R

EC-2, 10 JUL 2025 to 07 AUG 2025

EC-2, 10 JUL 2025 to 07 AUG 2025

INDIANAPOLIS, INDIANA

AL-203 (FAA)

25219

LOC/DME I-IND <b>111.75</b> Chan <b>54</b> (Y)	APP CRS <b>050°</b>	Rwy Ldg <b>1200</b> TDZE <b>747</b> Apt Elev <b>796</b>
--	------------------------	---

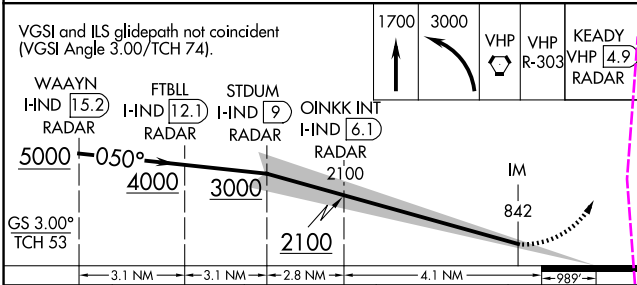
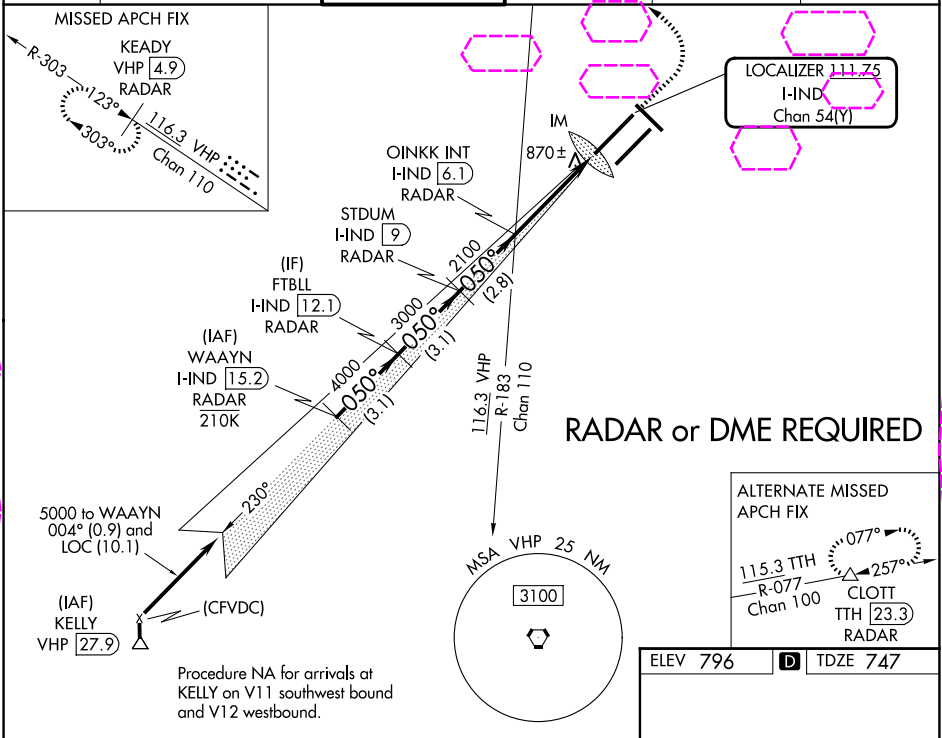
**ILS RWY 5L (CAT II & III)**  
INDIANAPOLIS INTL (IND)

**Simultaneous approach authorized.**  
CAT III: Localizer not suitable for electronic rollout guidance. DME or RADAR required.

**ALSF-2**

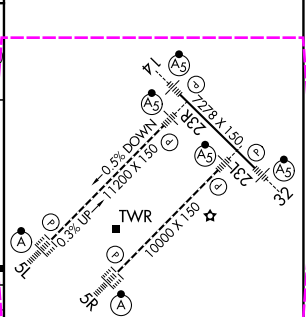
**MISSED APPROACH:** Climb to 1700 then climbing left turn to 3000 direct VHP VORTAC then on VHP VORTAC R-303 to KEADY/VHP 4.9 DME/RADAR and hold.

D-ATIS <b>134.25</b>	INDIANAPOLIS APP CON <b>128.175 317.8</b>	INDY TOWER <b>120.9 251.1</b>	GND CON <b>121.9</b>	CLNC DEL <b>128.75 251.1</b>	CPDLC
-------------------------	--	----------------------------------	-------------------------	---------------------------------	-------



CATEGORY	A	B	C	D
S-ILS 5L	CAT II RA 113/12 100 DA 847			
S-ILS 5L	CAT III RVR 07			

**CATEGORY II & III ILS - SPECIAL AIRCREW & AIRCRAFT CERTIFICATION REQUIRED**



ELEV 796	<b>D</b>	TDZE 747
----------	----------	----------

INDIANAPOLIS, INDIANA  
Amdt 5A 08OCT20

39°43'N-86°18'W

**INDIANAPOLIS INTL (IND)**  
**ILS RWY 5L (CAT II & III)**

EC-2, 07 AUG 2025 to 04 SEP 2025

EC-2, 07 AUG 2025 to 04 SEP 2025

HIRL all Rwy's  
TDZ/CL Rwy's 5L and 5R