

INDIANAPOLIS, INDIANA

AL-203 (FAA)

24361

LOC/DME I-UZK 111.75 Chan 54 (Y)	APP CRS 230°	Rwy Idg 1200 TDZE 783 Apt Elev 796
--	------------------------	---

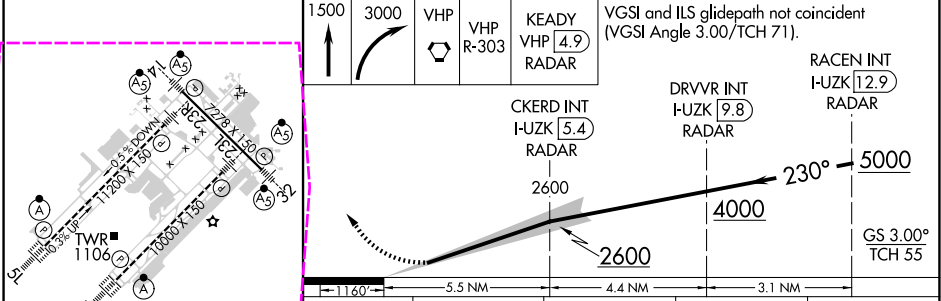
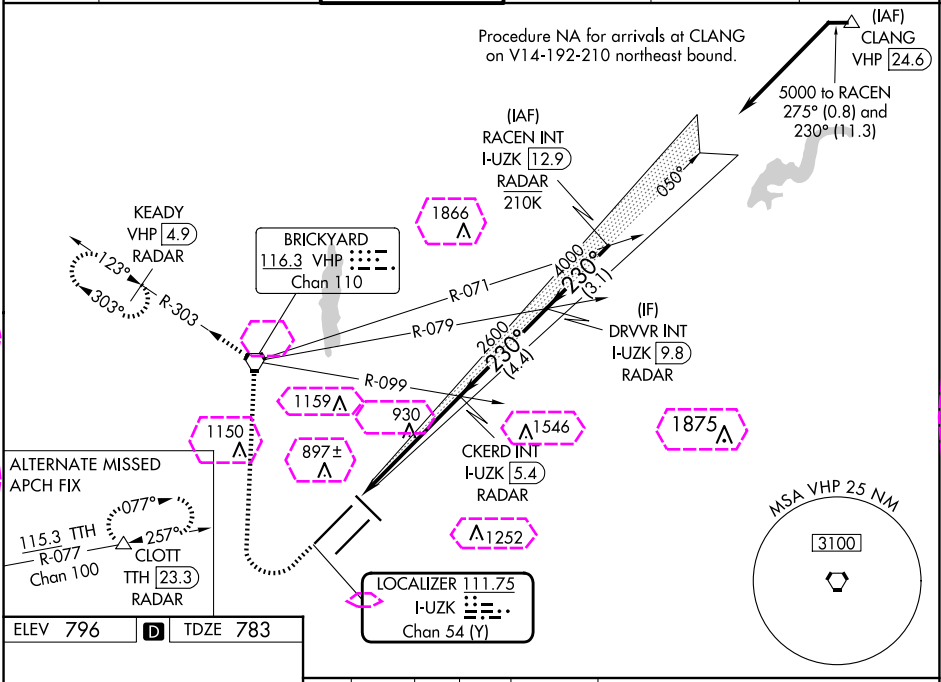
ILS RWY 23R (SA CAT I & II)
INDIANAPOLIS INTL (IND)

Simultaneous approach authorized. DME or RADAR required.
Requires specific OPSPEC, MSPEC, or LOA approval and use of HUD to DH. Reduced lighting: requires specific OPSPEC, MSPEC, or LOA approval and use of autoland or HUD to touchdown.

MALSR

MISSED APPROACH: Climb to 1500 then climbing right turn to 3000 direct VHP VORTAC and on VHP R-303 to KEADY/VHP 4.9 DME/RADAR and hold.

D-ATIS 134.25	INDIANAPOLIS APP CON 128.175 317.8	INDY TOWER 120.9 251.1	GND CON 121.9	CLNC DEL 128.75 251.1	CPDLC
-------------------------	--	----------------------------------	-------------------------	---------------------------------	-------



CATEGORY	A	B	C	D
S-ILS 23R	SA CAT I	RA 140/14	150	DA 933
S-ILS 23R	SA CAT II	RA 96/12	100	DA 883

SA CATEGORY I & II ILS - SPECIAL AIRCREW & AIRCRAFT CERTIFICATION REQUIRED

HIRL all Rwys
TDZ/CL Rwys 5L and 5R
INDIANAPOLIS, INDIANA
Amdt 6 29MAR18

39°43'N-86°18'W

INDIANAPOLIS INTL (IND)
ILS RWY 23R (SA CAT I & II)

EC-2, 10 JUL 2025 to 07 AUG 2025

EC-2, 10 JUL 2025 to 07 AUG 2025

INDIANAPOLIS, INDIANA

AL-203 (FAA)

25219

LOC/DME I-UZK 111.75 Chan 54 (Y)	APP CRS 230°	Rwy Ldg TDZE 783 Apt Elev 796
--	------------------------	---

ILS RWY 23R (SA CAT I & II)

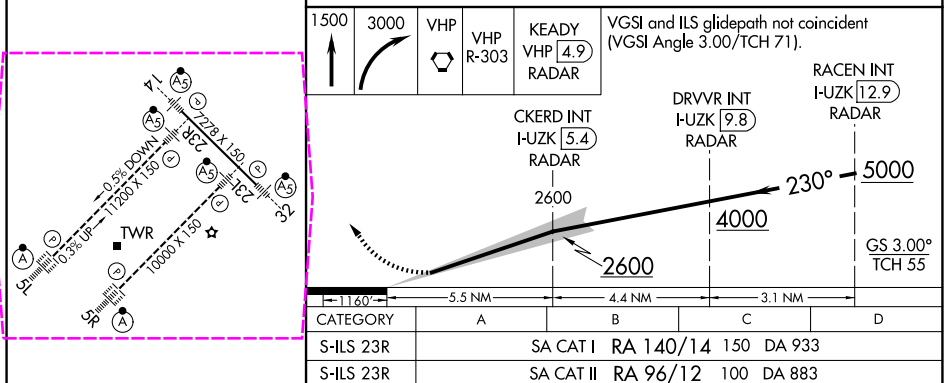
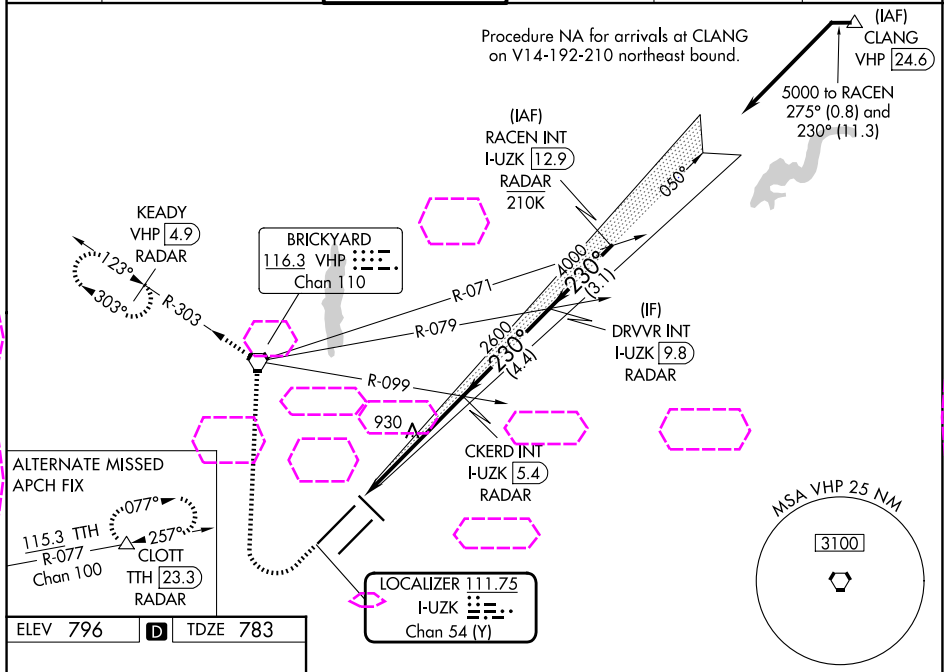
INDIANAPOLIS INTL (IND)

Simultaneous approach authorized. DME or RADAR required.
Requires specific OPSPEC, MSPEC, or LOA approval and use of HUD to DH. Reduced lighting: requires specific OPSPEC, MSPEC, or LOA approval and use of autoland or HUD to touchdown.



MISSED APPROACH: Climb to 1500 then climbing right turn to 3000 direct VHP VORTAC and on VHP R-303 to KEADY/VHP 4.9 DME/RADAR and hold.

D-ATIS 134.25	INDIANAPOLIS APP CON 128.175 317.8	INDY TOWER 120.9 251.1	GND CON 121.9	CLNC DEL 128.75 251.1	CPDLC
-------------------------	--	----------------------------------	-------------------------	---------------------------------	-------



SA CATEGORY I & II ILS - SPECIAL AIRCREW & AIRCRAFT CERTIFICATION REQUIRED

INDIANAPOLIS, INDIANA
Amdt 6 29MAR18

39°43'N-86°18'W

INDIANAPOLIS INTL (IND)

ILS RWY 23R (SA CAT I & II)

EC-2, 07 AUG 2025 to 04 SEP 2025

EC-2, 07 AUG 2025 to 04 SEP 2025