





VOR-B

HFIFNA RGNI (HLN)

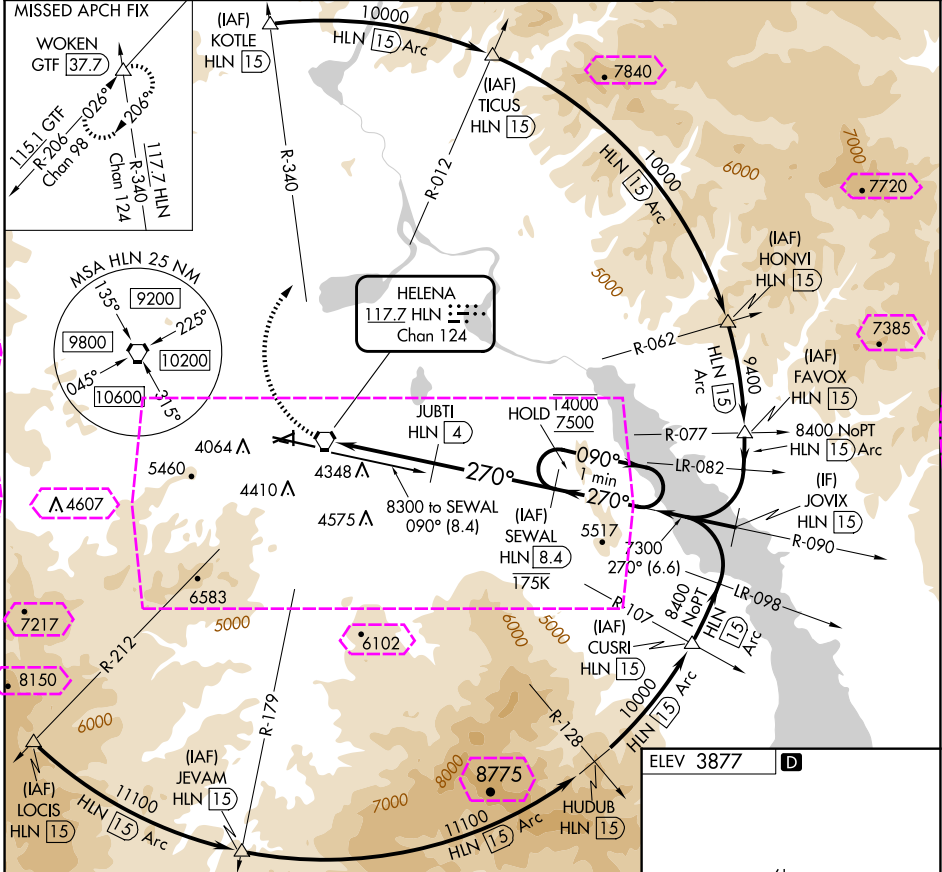
VORTAC HLN 117.7 Chen 124	APP CRS 270°	Rwy Idg TDZE Apt Elev	N/A N/A 3877
---	------------------------	-----------------------------	---

DME required.

 Circling NA to Rwy 10 and 28. Circling NA for Cat D south of Rwy 9-27. Circling
 Rwy 5, 23, 35 NA at night. Rwy 5, 23, 35 helicopter visibility reduction below
 1 SM NA. DME Arc to final approach course required for turbojet aircraft.
 Holding at SEWAL authorized for Cat A and B aircraft only.

MISSED APPROACH: Climbing right turn to 9000 on HLN VORTAC R-340 to WOKEN INT/GTF 37.7 DME and hold.

ATIS 120.4	HELENA APP CON ★ 119.5 229.4	HELENA TOWER ★ 118.3 (CTAF) 0 257.8	GND CON 121.9	UNICOM 122.95
---------------	---------------------------------	--	------------------	------------------



9000
HLN
R-340

WOKEN
△

JUBT1
HLN
4

SEWAL
HLN
8.4

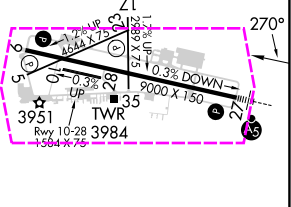
One Minute Holding Pattern


090° → 14000
← 270° 7500

7300

270°

6020



CATEGORY	A	B	C	D
 CIRCLING	4760-1¼ 883 (900-1¼)	4800-1¼ 923 (1000-1¼)	6000-3	2123 (2200-3)

REIL Rwys 9, 17, and 35 **L**
MIRL Rwys 5-23 and 17-35 **L**
HIRL Rwy 9-27 **L**

NW-1, 10 JUL 2025 to 07 AUG 2025

NW-1, 10 JUL 2025 to 07 AUG 2025

HELENA, MONTANA

AL-192 (FAA)

25219

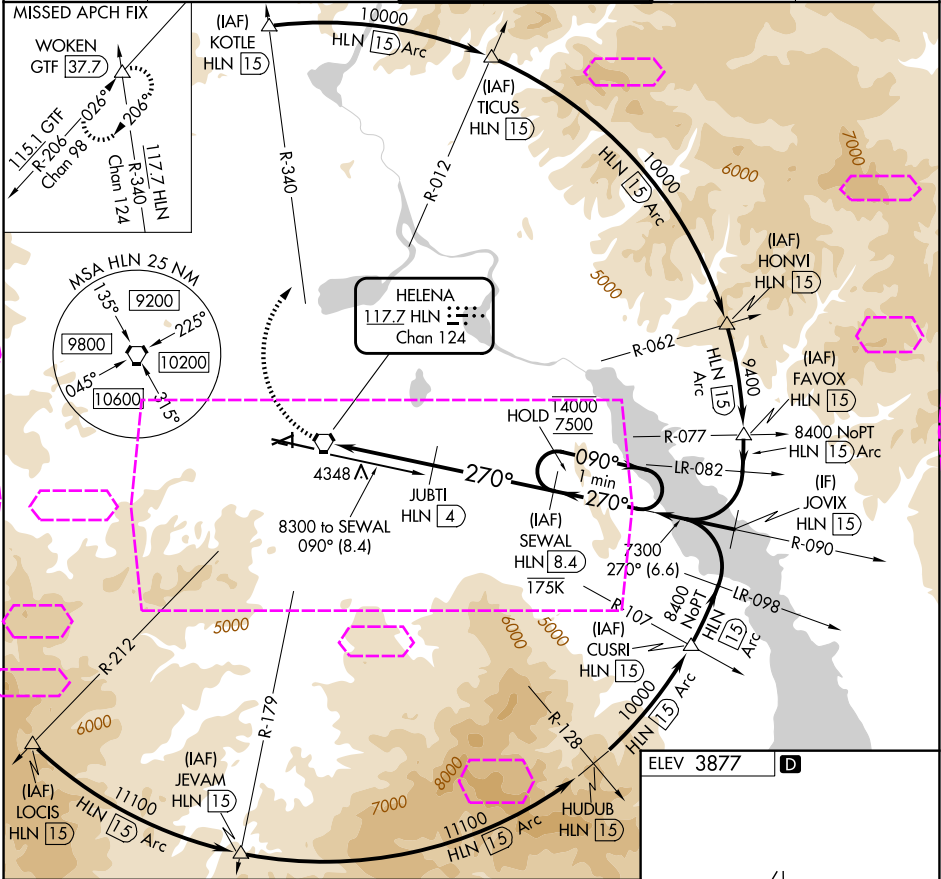
VORTAC HLN 117.7 Chan 124	APP CRS 270°	Rwy Ldg TDZE Apt Elev N/A N/A 3877
---	------------------------	--

VOR-B

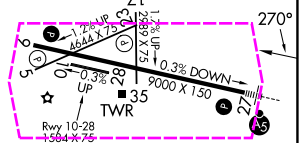
HELENA RGNL (HLN)

DME required.	MISSED APPROACH: Climbing right turn to 9000 on HLN VORTAC R-340 to WOKEN INT/GTF 37.7 DME and hold.
---------------	--

ATIS 120.4	HELENA APP CON ★ 119.5 229.4	HELENA TOWER ★ 118.3 (CTAF) 257.8	GND CON 121.9	UNICOM 122.95
----------------------	--	---	-------------------------	-------------------------



9000	WOKEN HLN R-340	JUBTI HLN 4	SEWAL HLN 8.4	One Minute Holding Pattern
9000	HLN VORTAC	6020	7300	14000 7500
4 NM	4 NM	4 NM	4 NM	
CATEGORY	A	B	C	D
CIRCLING	4760-1¼ 883 (900-1¼)	4800-1¼ 923 (1000-1¼)	6000-3	2123 (2200-3)



HELENA, MONTANA
Amdt 8 23FEB23

46°36'N-111°59'W

HELENA RGNL (HLN)
VOR-B

NW-1, 07 AUG 2025 to 04 SEP 2025

NW-1, 07 AUG 2025 to 04 SEP 2025