

HELENA, MONTANA

AL-192 (FAA)

25107

VORTAC HLN 117.7 Chan 124	APP CRS 270°	Rwy Idg TDZE Apt Elev N/A N/A 3877
---	------------------------	--

VOR-A

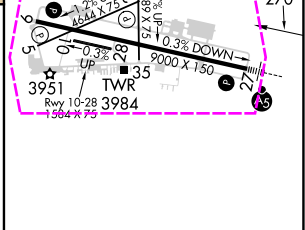
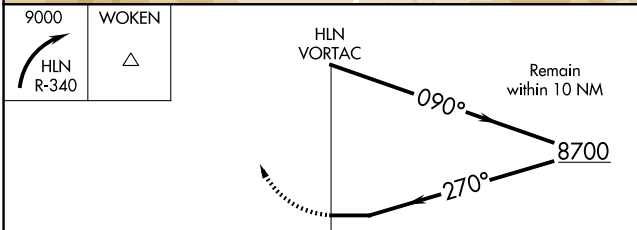
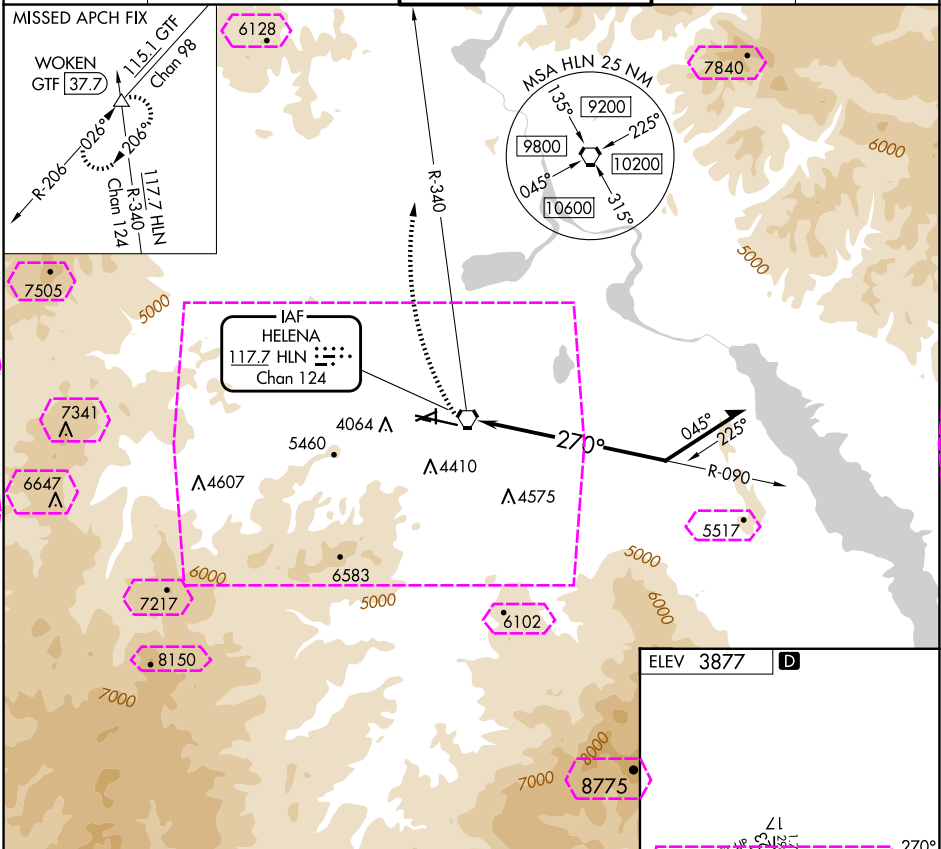
HELENA RGNL (HLN)

⚠ Circling NA to Rwy 10 and 28. Circling NA for Cat D south of Rwy 9-27. Circling Rwy 5, 23, 35 NA at night. Rwy 5, 23, 35 helicopter visibility reduction below 1 SM NA.

❄ -17°C

MISSED APPROACH: Climbing right turn to 9000 on HLN VORTAC R-340 to WOKEN INT/GTF 37.7 DME and hold.

ATIS 120.4	HELENA APP CON ★ 119.5 229.4	HELENA TOWER ★ 118.3 (CTAF) 257.8	GND CON 121.9	UNICOM 122.95
----------------------	--	---	-------------------------	-------------------------



CATEGORY	A	B	C	D
CIRCLING	7200-1¼ 3323 (3400-1¼)	7200-1½ 3323 (3400-1½)	7200-3	3323 (3400-3)

REIL Rwy 9, 17, and 35
MIRL Rwy 5-23 and 17-35
HIRL Rwy 9-27

HELENA, MONTANA

Amdt 16 23FEB23

46°36'N-111°59'W

HELENA RGNL (HLN)

VOR-A

NW-1, 10 JUL 2025 to 07 AUG 2025

NW-1, 10 JUL 2025 to 07 AUG 2025


HELENA, MONTANA

AL-192 (FAA)

25219

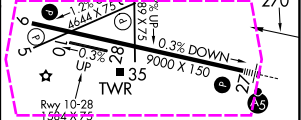
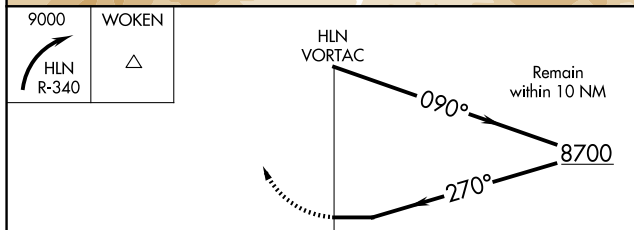
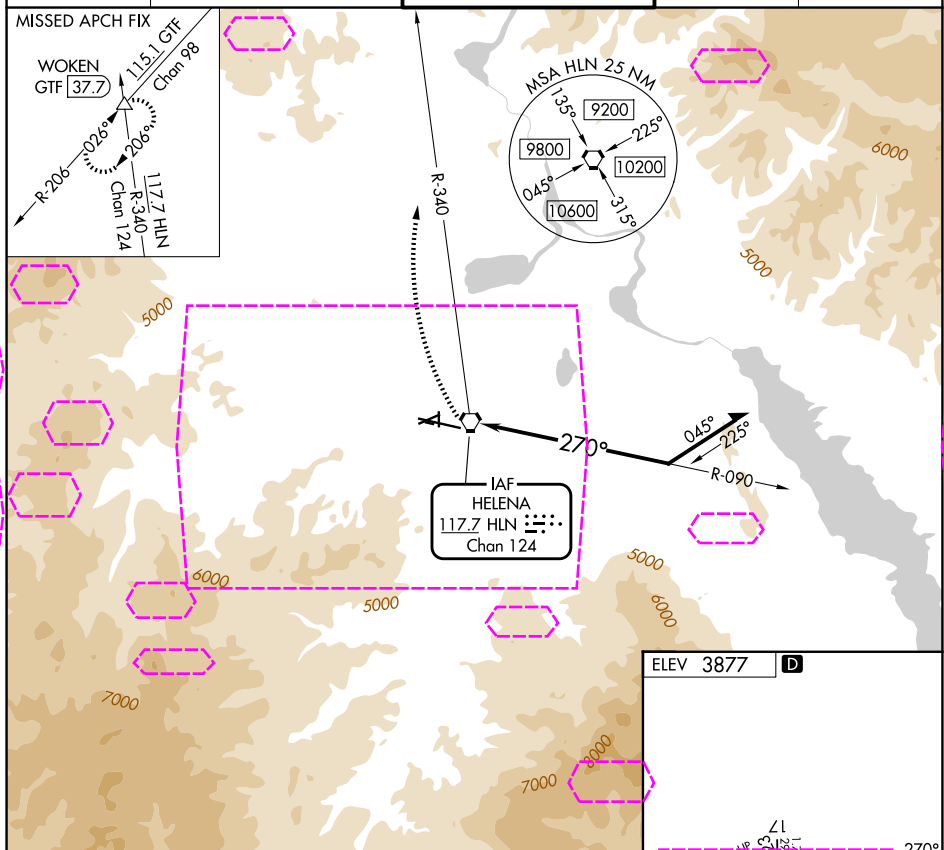
VORTAC HLN 117.7 Chan 124	APP CRS 270°	Rwy Ldg TDZE Apt Elev	N/A N/A 3877
---	------------------------	-----------------------------	---

VOR-A
HELENA RGNL (HLN)

 Circling NA to Rwy 10 and 28. Circling NA for Cat D south of Rwy 9-27. Circling Rwy 5, 23, 35 NA at night. Rwy 5, 23, 35 helicopter visibility reduction below 1 SM NA.

MISSED APPROACH: Climbing right turn to 9000 on HLN VORTAC R-340 to WOKEN INT/GTF 37.7 DME and hold.

ATIS 120.4	HELENA APP CON ★ 119.5 229.4	HELENA TOWER ★ 118.3 (CTAF) 0 257.8	GND CON 121.9	UNICOM 122.95
---------------	---------------------------------	--	------------------	------------------



CATEGORY	A	B	C	D
CIRCLING	7200-1¼ 3323 (3400-1¼)	7200-1½ 3323 (3400-1½)	7200-3	3323 (3400-3)

REIL Rwy 9, 17, and 35 **L**
MIRL Rwy 5-23 and 17-35 **L**
HIRL Rwy 9-27 **L**

HELENA, MONTANA
Amdt 16 23FEB23

46°36'N-111°59'W

HELENA RGNL (HLN)
VOR-A

NW-1, 07 AUG 2025 to 04 SEP 2025