

HELENA, MONTANA


AL-192 (FAA)

25107

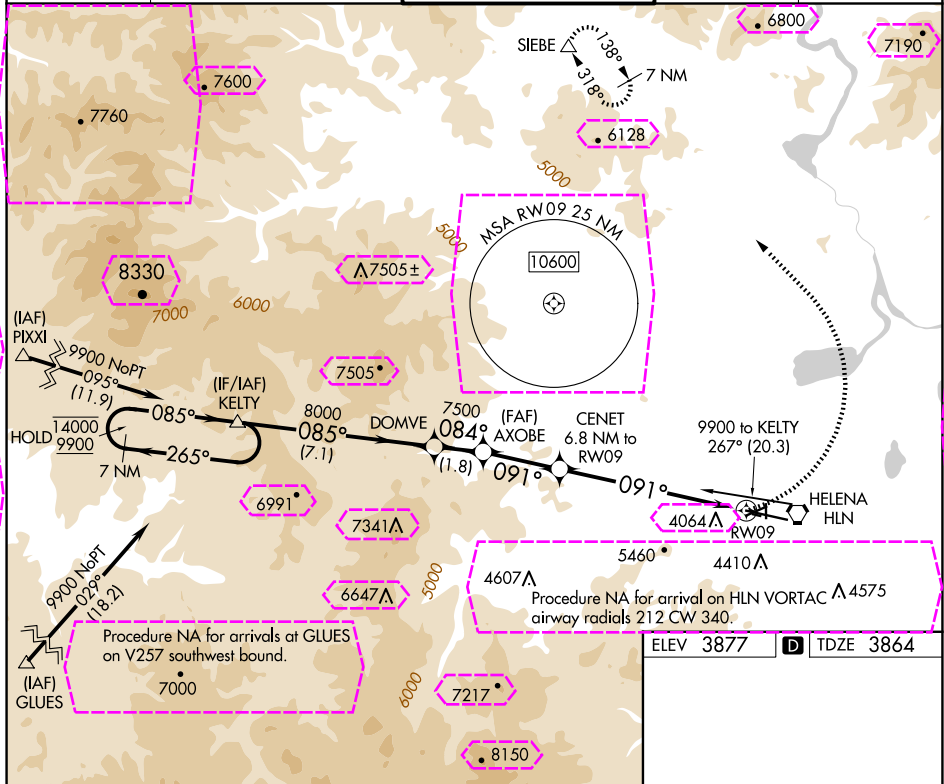
APP CRS	Rwy Idg	9000
091°	TDZE	3864
	Apt Elev	3877

RNAV (GPS) Y RWY 9

HELENA RGNL (HLN)

RNP APCH - GPS.	MISSED APPROACH: Climbing left turn to 9300 direct SIEBE and hold, continue climb-in-hold to 9300.
 Circling NA to Rwys 10 and 28. Circling NA for Cat D south of Rwy 9-27. Circling Rwy 5, 23, 35, NA at night.	

ATIS 120.4	HELENA APP CON ★ 119.5 229.4	HELENA TOWER ★ 118.3 (CTAF) 0 257.8	GND CON 121.9	UNICOM 122.95
---------------	---------------------------------	--	------------------	------------------



VGSI and descent angles not coincident (VGSI Angle 3.30/TCH 55).				9300 SIEBE
7 NM Holding Pattern	KELTY	DOMVE	AXOBE	CENET
14000 ← 265°	9900 ← 085°	8000 ← 085°	7500 ← 084°	6460 ← 091°
7.1 NM	1.8 NM	2.8 NM	3.1 NM	3.8 NM
CATEGORY	A	B	C	D
LNAV MDA	5220-1¼ 1356 (1400-1¼)	5220-1½ 1356 (1400-1½)	5220-3 1356 (1400-3)	
CIRCLING	5220-1¼ 1343 (1400-1¼)	5220-1½ 1343 (1400-1½)	6000-3 2123 (2200-3)	

REIL Rwys 9, 17, and 35 1

MIRL Rwys 5-23 and 17-35 1

HIRL Rwy 9-27 1

HELENA, MONTANA
Amdt 2A 18APR24

46°36'N-111°59'W

RNAV (GPS) Y RWY 9

HELENA RGNL (HLN)

HELENA, MONTANA

AL-192 (FAA)

25219

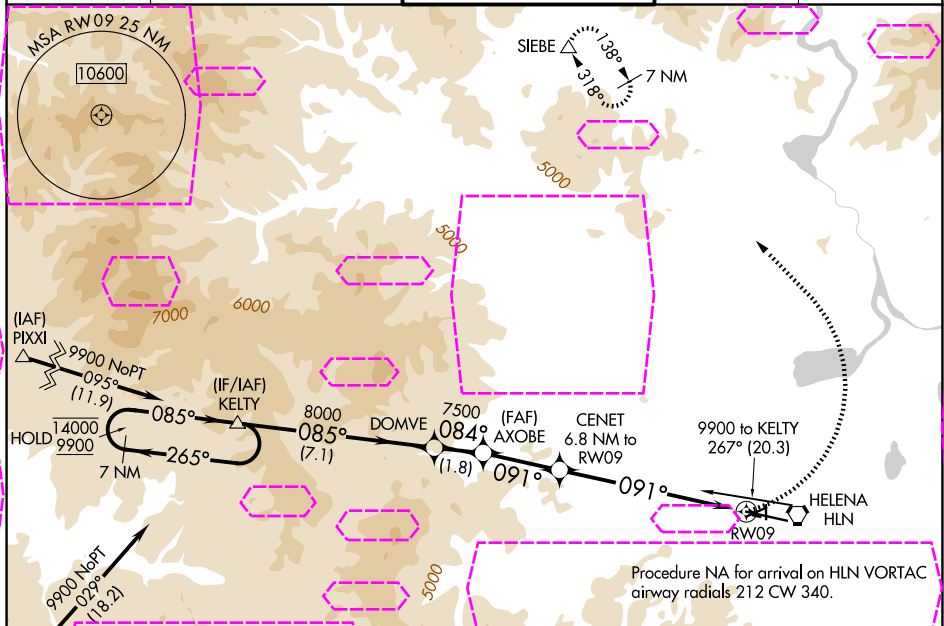
APP CRS 091°	Rwy Ldg TDZE Apt Elev 3900 3864 3877
------------------------	--

RNAV (GPS) Y RWY 9

HELENA RGNL (HLN)

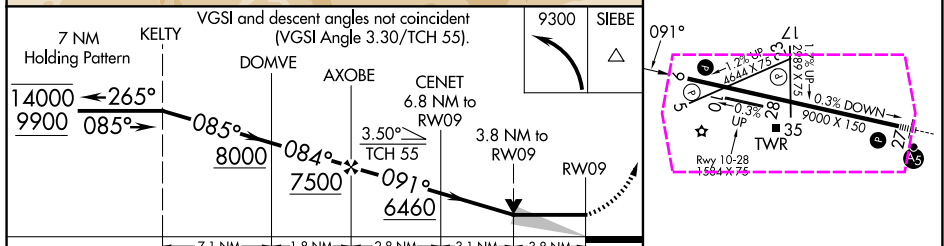
RNP APCH - GPS.	MISSED APPROACH: Climbing left turn to 9300 direct SIEBE and hold, continue climb-in-hold to 9300.
 Circling NA to Rwy 10 and 28. Circling NA for Cat D south of Rwy 9-27. Circling Rwy 5, 23, 35, NA at night.	

ATIS 120.4	HELENA APP CON ★ 119.5 229.4	HELENA TOWER ★ 118.3 (CTAF) 0 257.8	GND CON 121.9	UNICOM 122.95
----------------------	--	---	-------------------------	-------------------------



ELEV 3877	TDZE 3864
-----------	-----------

Procedure NA for arrivals at GLUES on V257 southwest bound.



CATEGORY	A	B	C	D
LNVA MDA	5220-1¼ 1356 (1400-1¼)	5220-1½ 1356 (1400-1½)	5220-3 1356 (1400-3)	
CIRCLING	5220-1¼ 1343 (1400-1¼)	5220-1½ 1343 (1400-1½)	6000-3 2123 (2200-3)	

HELENA, MONTANA
Amdt 2A 18APR24

46°36'N-111°59'W

HELENA RGNL (HLN)
RNAV (GPS) Y RWY 9

REIL Rwy 9, 17, and 35
MIRL Rwy 5-23 and 17-35
HIRL Rwy 9-27

NW-1, 07 AUG 2025 to 04 SEP 2025

NW-1, 07 AUG 2025 to 04 SEP 2025