

HELENA, MONTANA

AL-192 (FAA)

25107

APP CRS <b>091°</b>	Rwy Idg TDZE Apt Elev	<b>9000</b> <b>3864</b> <b>3877</b>
------------------------	-----------------------------	---

# RNAV (RNP) Z RWY 9

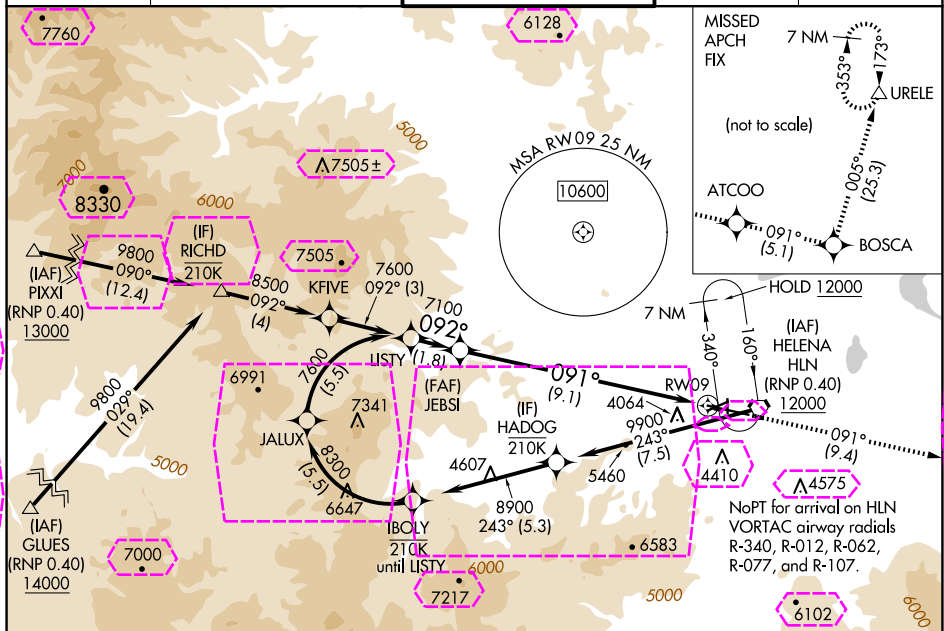
HELENA RGNL (HLN)

RNP AR APCH - GPS.

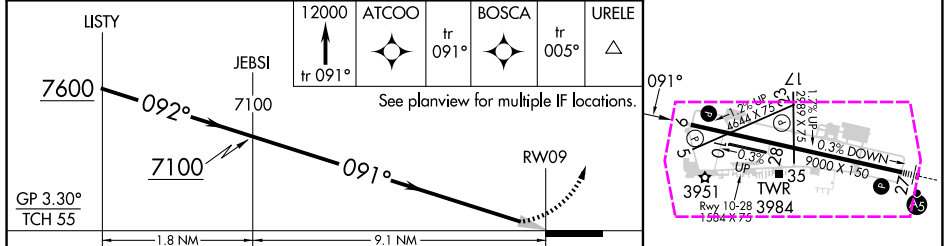
**17°C** For uncompensated Baro-VNAV systems, procedure NA below -28°C or above 54°C.

MISSED APPROACH: Climb to 12000 on track 091° to ATCOO and on track 091° to BOSCA and on track 005° to URELE and hold.

ATIS <b>120.4</b>	HELENA APP CON ★ <b>119.5 229.4</b>	HELENA TOWER ★ <b>118.3 (CTAF) 0 257.8</b>	GND CON <b>121.9</b>	UNICOM <b>122.95</b>
----------------------	--	---	-------------------------	-------------------------



ELEV 3877	TDZE 3864
-----------	-----------



CATEGORY	A	B	C	D
RNP 0.11 DA		4224-1	360 (400-1)	
RNP 0.17 DA		4296-1¼	432 (500-1¼)	
RNP 0.30 DA		4489-1¾	625 (700-1¾)	

**AUTHORIZATION REQUIRED**

REIL Rwy 9, 17, and 35  
MIRL Rwy 5-23 and 17-35  
HIRL Rwy 9-27

HELENA, MONTANA

Amtd 2 25JAN24

46°36'N-111°59'W

HELENA RGNL (HLN)  
**RNAV (RNP) Z RWY 9**

NW-1, 10 JUL 2025 to 07 AUG 2025

NW-1, 10 JUL 2025 to 07 AUG 2025

HELENA, MONTANA

AL-192 (FAA)

25219

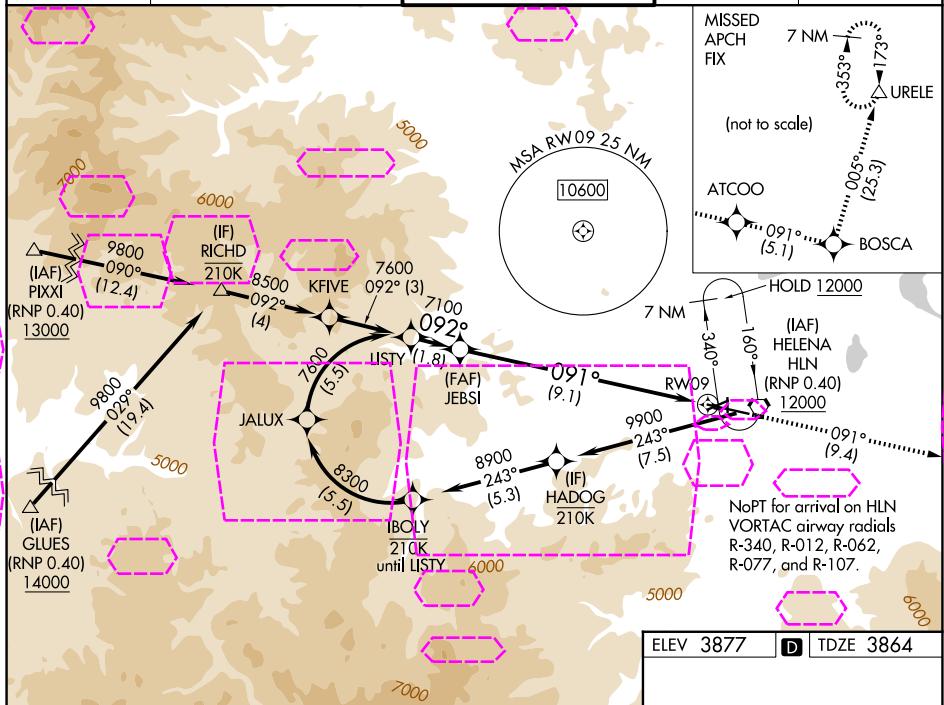
APP CRS <b>091°</b>	Rwy Ldg TDZE Apt Elev	<b>9000</b> <b>3864</b> <b>3877</b>
------------------------	-----------------------------	---

# RNAV (RNP) Z RWY 9

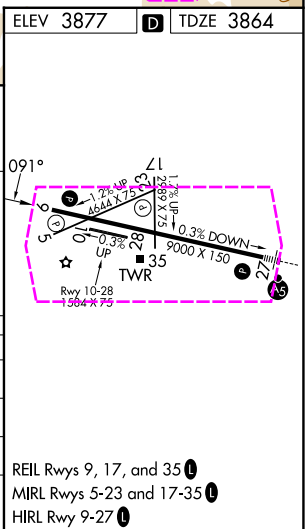
HELENA RGNL (HLN)

RNP AR APCH - GPS.	MISSED APPROACH: Climb to 12000 on track 091° to ATCOO and on track 091° to BOSCA and on track 005° to URELE and hold.
⚠️ 16°C	For uncompensated Baro-VNAV systems, procedure NA below -28°C or above 54°C.

ATIS <b>120.4</b>	HELENA APP CON ★ <b>119.5 229.4</b>	HELENA TOWER ★ <b>118.3 (CTAF) 0 257.8</b>	GND CON <b>121.9</b>	UNICOM <b>122.95</b>
----------------------	--	---	-------------------------	-------------------------



LISTY	JEBSI	ATCOO	BOSCA	URELE
7600	7100	tr 091°	tr 091°	tr 005°
See planview for multiple IF locations.				
GP 3.30° TCH 55	1.8 NM	9.1 NM		
CATEGORY	A	B	C	D
RNP 0.11 DA		4224-1	360 (400-1)	
RNP 0.17 DA		4296-1¼	432 (500-1¼)	
RNP 0.30 DA		4489-1¾	625 (700-1¾)	
AUTHORIZATION REQUIRED				



HELENA, MONTANA

Amtd 2 25JAN24

46°36'N-111°59'W

# RNAV (RNP) Z RWY 9

HELENA RGNL (HLN)