

HELENA, MONTANA

AL-192 (FAA)

25107

APP CRS 271°	Rwy Idg TDZE 3852 Apt Elev 3877
-----------------	---

# RNAV (RNP) Z RWY 27

HELENA RGNL (HLN)

RNP AR APCH - GPS.

**⚠** Inop table does not apply to RNP 0.30 DA. For uncompensated Baro-VNAV systems, procedure NA below -28°C or above 54°C. For inop ALS, increase RNP 0.13 DA\* visibility all Cats to ½ SM, RNP 0.30 DA\* visibility all Cats to 1½ SM.

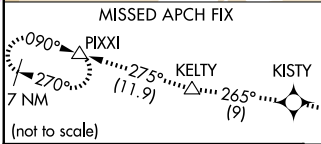
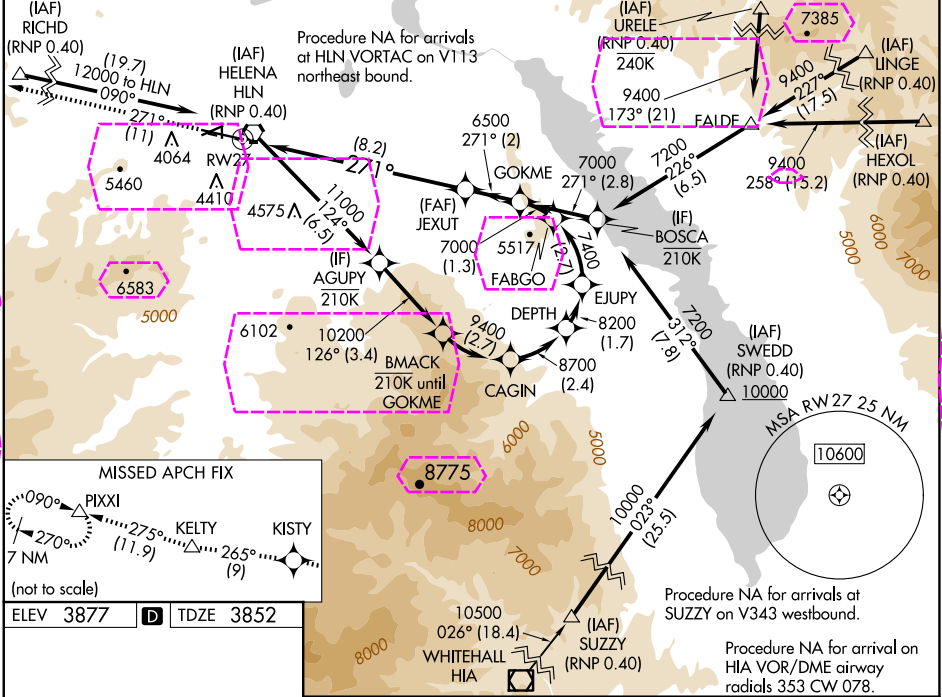


**MISSED APPROACH:** Climb to 12000 on the RNAV missed approach route to PIXXI and hold, continue climb-in-hold to 12000.

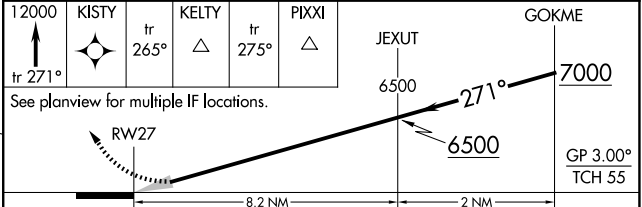
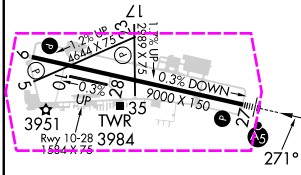
\*Missed approach requires minimum climb of 280 feet per NM to 7800.

#Missed approach requires minimum climb of 375 feet per NM to 6300.

ATIS 120.4	HELENA APP CON * 119.5 229.4	HELENA TOWER * 118.3 (CTAF) 0 257.8	GND CON 121.9	UNICOM 122.95
---------------	---------------------------------	--	------------------	------------------



ELEV 3877	D	TDZE 3852
-----------	---	-----------



CATEGORY	A	B	C	D
RNP 0.13 DA*		4172-½	320 (300-½)	
RNP 0.20 DA#		4303-¾	451 (500-¾)	
RNP 0.30 DA#		4353-1	501 (500-1)	
RNP 0.30 DA		4866-4	1014 (1000-4)	

REIL Rws 9, 17, and 35  
MIRL Rws 5-23 and 17-35  
HIRL Rwy 9-27

## AUTHORIZATION REQUIRED

HELENA, MONTANA

Amdt 2 25JAN24

46°36'N-111°59'W

HELENA RGNL (HLN)

# RNAV (RNP) Z RWY 27

NW-1, 10 JUL 2025 to 07 AUG 2025

NW-1, 10 JUL 2025 to 07 AUG 2025

APP CRS	Rwy Ldg	9000
271°	TDZE	3852
	Apt Elev	3877

RNAV (RNP) Z RWY 27  
HELENA RGNL (HLN)

RNP AR APCH - GPS.

**V**  
**A**  
**❄️ -16°C**

Inop table does not apply to RNP 0.30 DA. For uncompensated Baro-VNAV systems, procedure NA below -28°C or above 54°C. For inop ALS, increase RNP 0.13 DA\* visibility all Cats to 7/8 SM, RNP 0.30 DA\* visibility all Cats to 1 3/8 SM.

MALSR

**MISSED APPROACH:** Climb to 12000 on the RNAV missed approach route to PIXXI and hold, continue climb-in-hold to 12000.

\*Missed approach requires minimum climb of 280 feet per NM to 7800.

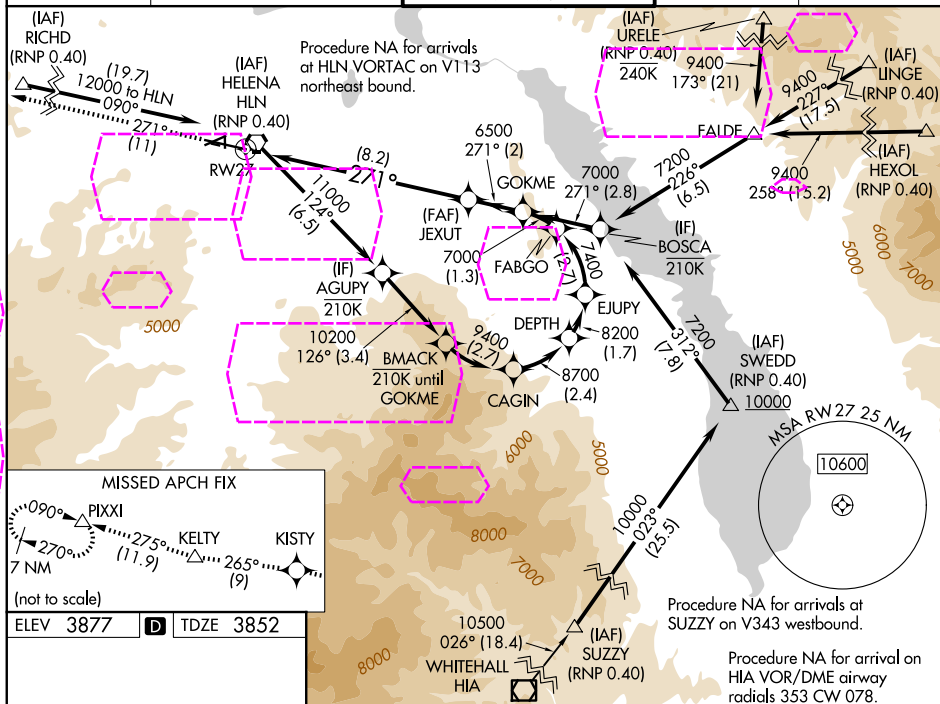
#Missed approach requires minimum climb of 375 feet per NM to 6300.

ATIS  
120.4

HELENA APP CON ★  
119.5 229.4

HELENA TOWER ★  
118.3 (CTAF) **L** 257.8

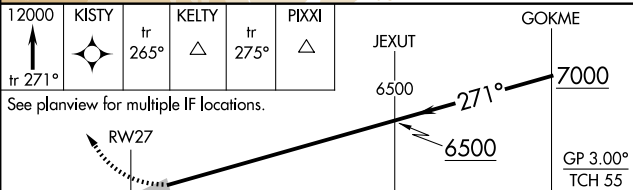
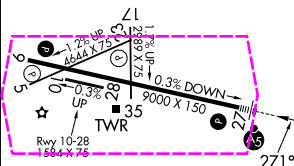
GND C  
121.5

UNICOM  
122.95

ELEV 3877	<b>D</b>	TDZE 3852
-----------	----------	-----------

	1992	1993	1994	1995
1992				
1993				
1994				
1995				

D	TDZE 3852
---	-----------



CATEGORY	A	B	C	D
RNP 0.13 DA*		4172- $\frac{1}{2}$	320 (300- $\frac{1}{2}$ )	
RNP 0.20 DA#		4303- $\frac{7}{8}$	451 (500- $\frac{7}{8}$ )	
RNP 0.30 DA#		4353-1	501 (500-1)	
RNP 0.30 DA		4866-4	1014 (1000-4)	

REIL Rwy 9, 17, and 35 **L**  
MIRL Rwy 5-23 and 17-35 **L**  
HIRL Rwy 9-27 **L**

AUTHORIZATION REQUIRED

HELENA, MONTANA

Amdt 2 25JAN24

HELENA RGNI (HLN)

46°36'N-111°59'W

RNAV (RNP) Z RWY 27