



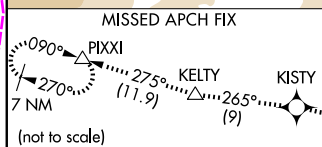
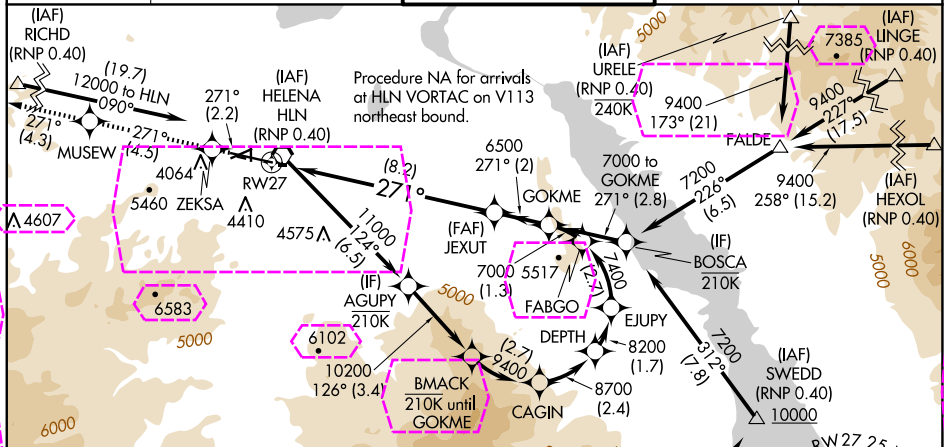
APP CRS <b>271°</b>	Rwy Idg TDZE Apt Elev	<b>9000</b> <b>3852</b> <b>3877</b>
------------------------	-----------------------------	---

## RNAV (RNP) Y RWY 27

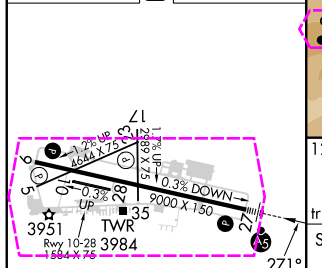
HELENA RGNL (HLN)

<p>RNP AR APCH - GPS.</p> <p> For uncompensated Baro-VNAV systems, procedure NA below -28°C or above 54°C. Missed approach requires RNP less than 1.0. For inop ALS, increase RNP 0.30 DA* visibility all Cats to 1 1/2 SM.</p>	<p>MALS</p> <p></p>	<p>MISSED APPROACH: Climb to 12000 on the RNAV missed approach route to PIX1 and hold, continue climb-in-hold to 12000.</p> <p>*Missed approach requires minimum climb of 260 feet per NM to 7900; if unable to meet climb gradient, see RNAV (RNP) Z RWY 27.</p>
--	--	---

ATIS <b>120.4</b>	HELENA APP CON ★ <b>119.5 229.4</b>	HELENA TOWER ★ <b>118.3 (CTAF) 0 257.8</b>	GND CON <b>121.9</b>	UNICOM <b>122.95</b>
----------------------	--	---	-------------------------	-------------------------



ELEV 3877	<b>D</b>	TDZE 3852
-----------	----------	-----------

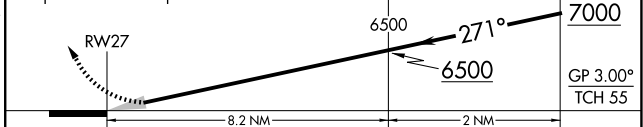


Procedure NA for arrivals at SUZY on V343 westbound.

Procedure NA for arrival on HIA VOR/DME airway radials 353 CW 078.

Altitude	Frequency	Direction	Distance	Altitude	Frequency	Direction	Distance	Altitude	Frequency	Direction	Distance	Altitude	Frequency	Direction	Distance	Altitude	Frequency	Direction	Distance
12000	ZEKS	tr 271°		10500	MUSEW	tr 271°		10500	KISTY	tr 265°		10500	KELTY	tr 275°		10500	PIXXI	tr 275°	

See planview for multiple IF locations.



CATEGORY	A	B	C	D
RNP 0.15 DA*		4284- <sup>3</sup> / <sub>4</sub>	432 (500- <sup>3</sup> / <sub>4</sub> )	
RNP 0.30 DA*		4321-1	469 (500-1)	

**AUTHORIZATION REQUIRED**

HELENA, MONTANA

AL-192 (FAA)

25219

APP CRS 271°	Rwy Ldg TDZE Apt Elev	9000 3852 3877
-----------------	-----------------------------	----------------------

# RNAV (RNP) Y RWY 27

HELENA RGNL (HLN)

RNP AR APCH - GPS.

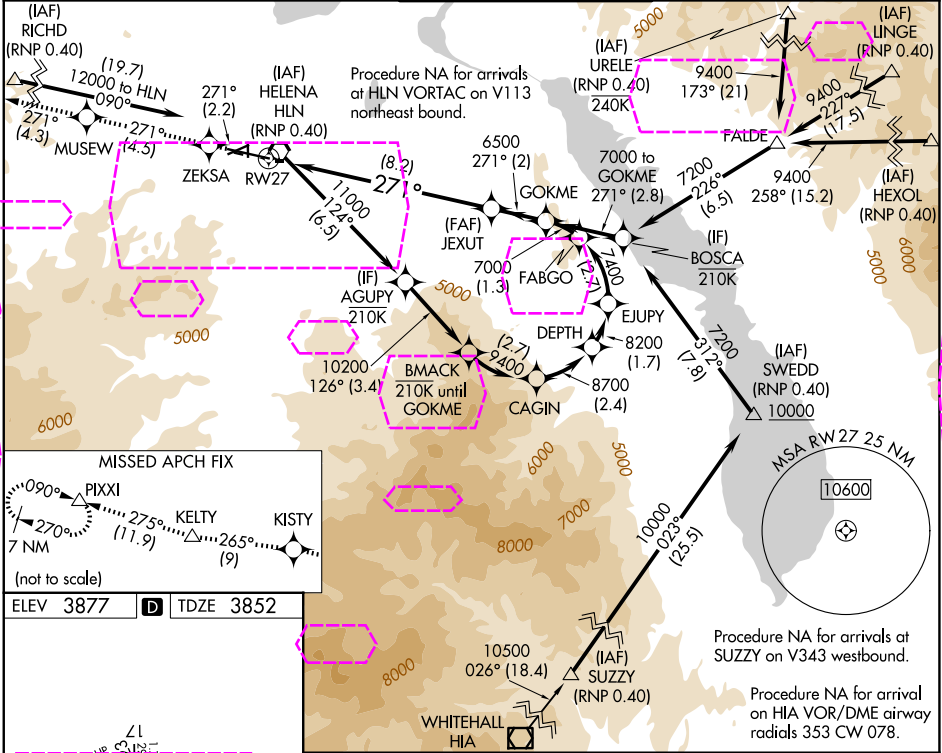
For uncompensated Baro-VNAV systems, procedure NA below -28°C or above 54°C. Missed approach requires RNP less than 1.0. For inop ALS, increase RNP 0.30 DA\* visibility all Cnts to 1 1/2 SM.

MALSR

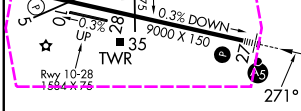
MISSED APPROACH: Climb to 12000 on the RNAV missed approach route to PIXXI and hold, continue climb-in-hold to 12000.

\*Missed approach requires minimum climb of 260 feet per NM to 7900; if unable to meet climb gradient, see RNAV (RNP) Z RWY 27.

ATIS 120.4	HELENA APP CON * 119.5 229.4	HELENA TOWER * 118.3 (CTAF) 257.8	GND CON 121.9	UNICOM 122.95
---------------	---------------------------------	--------------------------------------	------------------	------------------



ELEV 3877	TDZE 3852
-----------	-----------



12000	ZEKSA	MUSEW	KISTY	KELTY	PIXXI	GOKME
tr 271°	tr 271°	tr 271°	tr 265°	tr 275°	tr 275°	
See planview for multiple IF locations.						
RW27						
JEXUT						
6500						
271°						
7000						
GP 3.00°						
TCH 55						
-8.2 NM						
2 NM						
CATEGORY	A	B	C	D		
RNP 0.15 DA*	4284-3/4		432 (500-3/4)			
RNP 0.30 DA*	4321-1		469 (500-1)			

REIL Rws 9, 17, and 35  
MIRL Rws 5-23 and 17-35  
HIRL Rwy 9-27

HELENA, MONTANA

Amdt 2 25JAN24

46°36'N-111°59'W

HELENA RGNL (HLN)

# RNAV (RNP) Y RWY 27

NW-1, 07 AUG 2025 to 04 SEP 2025

NW-1, 07 AUG 2025 to 04 SEP 2025