




LOC I-HLN <b><u>110.1</u></b>	APP CRS <b>091°</b>	Rwy Idg TDZE App Elev	<b>N/A</b> <b>N/A</b> <b>3877</b>
----------------------------------	------------------------	-----------------------------	---

LOC BC-C  
HELENA RGNL (HLN)

DME required.

 Circling NA to Rwy 10 and 28. Circling Rwy 5, 23, 35 NA at night.  
 DME from HLN VORTAC. Simultaneous reception of I-HLN and HLN DME  
 required. Rwy 5, 23, 35 helicopter visibility reduction below 1 SM NA.

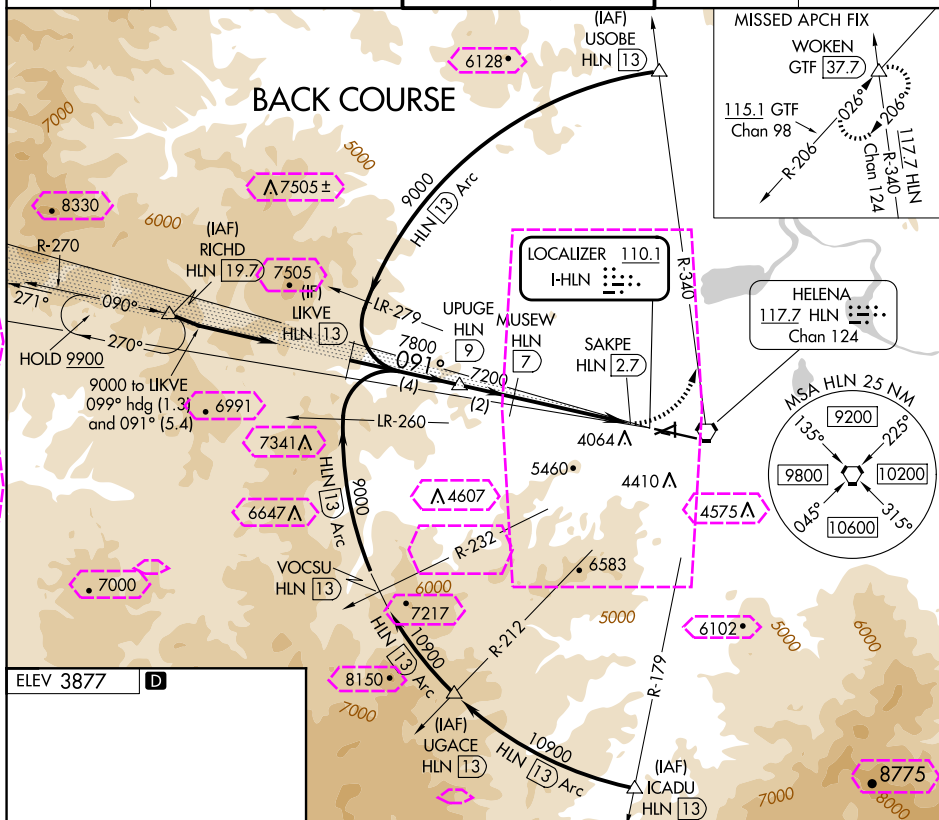
**MISSED APPROACH:** Climbing left turn to 9400 on HLN VORTAC R-340 to WOKEN INT/GTF 37.7 DME and hold, continue climb-in-hold to 9400.

ATIS  
120.4

HELENA APP CON ★  
119.5 229.4

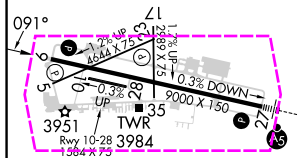
HELENA TOWER ★  
118.3 (CTAF) **L** 257.8

GND CON  
**121.9**

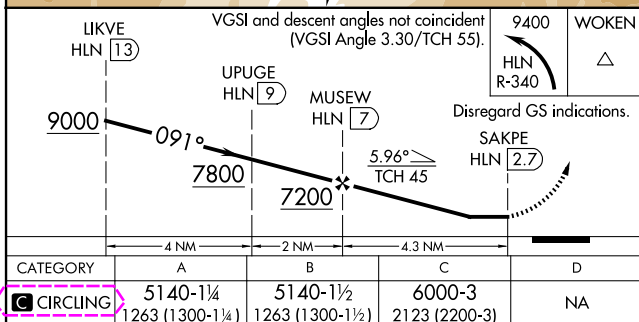
UNICOM  
122.95

ELEV 3877

**D**



REIL Rwys 9, 17, and 35 **L**  
MIRL Rwys 5-23 and 17-35 **L**  
HIRL Rwy 9-27 **L**



HELENA, MONTANA  
Amdt 6 23FEB23

HELENA RGNL (HLN)  
LOC BC-C

46°36'N-111°59'W

NW-1, 10 JUL 2025 to 07 AUG 2025

HELENA, MONTANA

AL-192 (FAA)

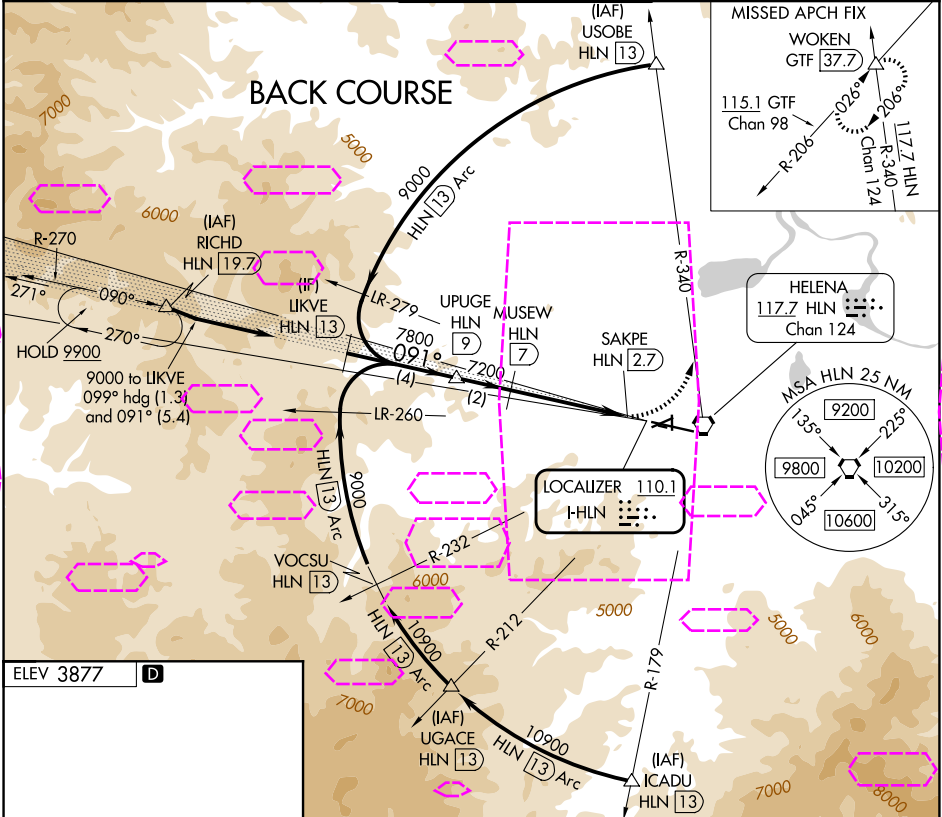
25219

LOC	I-HLN	APP CRS	Rwy Ldg	N/A
110.1		091°	TDZE	N/A
			Apt Elev	3877

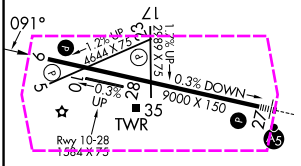
LOC BC-C  
HELENA RGNL (HLN)

DME required.	MISSED APPROACH: Climbing left turn to 9400 on HLN VORTAC R-340 to WOKEN INT/GTF 37.7 DME and hold, continue climb-in-hold to 9400.
<p>⚠ Circling NA to Rwys 10 and 28. Circling Rwy 5, 23, 35 NA at night. DME from HLN VORTAC. Simultaneous reception of I-HLN and HLN DME required. Rwy 5, 23, 35 helicopter visibility reduction below 1 SM NA.</p>	

ATIS 120.4	HELENA APP CON * 119.5 229.4	HELENA TOWER * 118.3 (CTAF) 0 257.8	GND CON 121.9	UNICOM 122.95
---------------	---------------------------------	--	------------------	------------------



ELEV 3877 D



REIL Rwys 9, 17, and 35  
MIRL Rwys 5-23 and 17-35  
HIRL Rwy 9-27

VGSI and descent angles not coincident (VGSI Angle 3.30/TCH 55).				9400 WOKEN HLN R-340
Disregard GS indications.				SAKPE HLN [2.7]
4 NM 2 NM 4.3 NM				
CATEGORY	A	B	C	D
CIRCLING	5140-1¼ 1263 (1300-1¼)	5140-1½ 1263 (1300-1½)	6000-3 2123 (2200-3)	NA

HELENA, MONTANA  
Amdt 6 23FEB23

46°36'N-111°59'W

HELENA RGNL (HLN)  
LOC BC-C

NW-1, 07 AUG 2025 to 04 SEP 2025

NW-1, 07 AUG 2025 to 04 SEP 2025