

LOC I-HLN 110.1	APP CRS 271°	Rwy Idg TDZE Apt Elev	9000 3852 3877
---------------------------	------------------------	-----------------------------	---

ILS Z or LOC Z RWY 27

HELENA RGNI (HLN)

ADF or DME required.

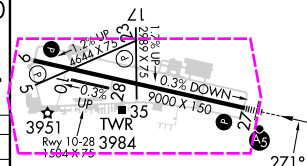
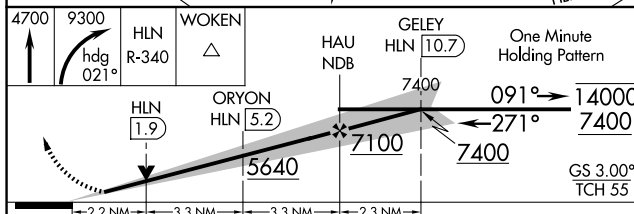
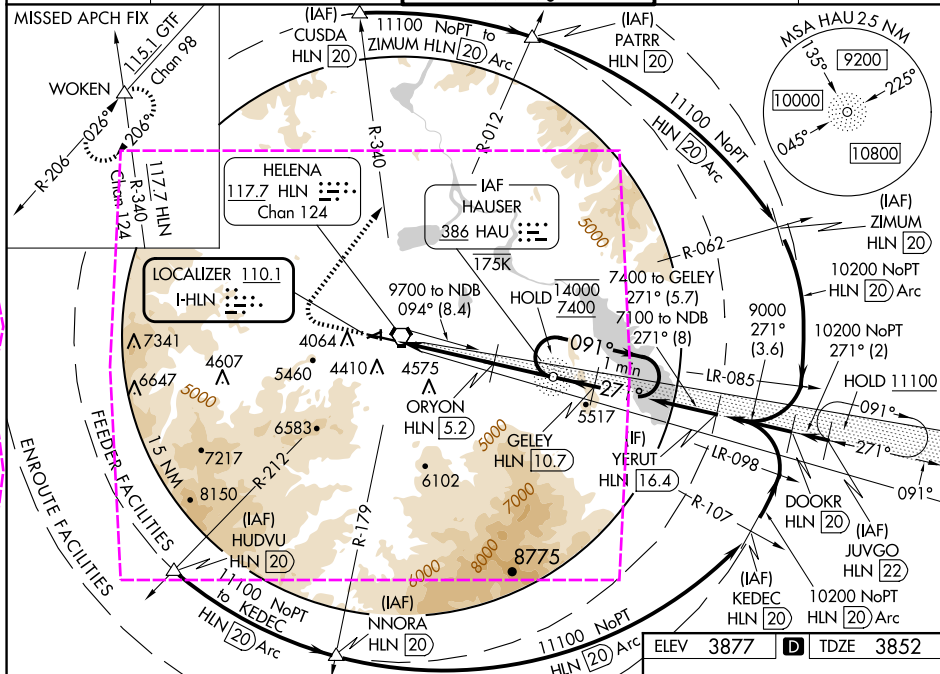
T Circling NA to Kwys 10 and 28. Circling Rwy 5, 23, 35 NA at night. Inop
A table does not apply to S-LOC 27 all Cats. For inop ALS, increase S-ILS 27
W Cat E visibility to $\frac{3}{4}$ mile, increase OROYN fix minimums: S-LOC 27 Cat C/
175 D/E visibility to 2 miles. Circling NA for Cats D and E south of Rwy 9-27.
 Holding at HAU NDB authorized for Cat A and B aircraft only. *DME from
 HLN VORTAC. DME use requires simultaneous reception of HLN and HLN DME.

MALSR

MISSED APPROACH: Climb to 4700 then climbing right turn to 9300 on heading 021° and on HLN VORTAC R-340 to WOKEN INT and hold, continue climb-in-hold to 9300.

#Missed approach requires minimum climb of 300 feet per NM to 6000; if unable to meet climb gradient, see ILS Y or LOC Y RWY 27.

ATIS 120.4	HELENA APP CON★ 119.5 229.4	HELENA TOWER★ 118.3 (CTAF) 0 257.8	GND CON 121.9	UNICOM 122.95
---------------	--------------------------------	---------------------------------------	------------------	------------------



CATEGORY	A	B	C	D	E
S-ILS 27#	4052-1/2 200 (200-1/2)				
S-LOC 27	5640-1 1/4 1788 (1800-1 1/4)	5640-1 1/2 1788 (1800-1 1/2)	5640-3 1788 (1800-3)		
CIRCLING C	5640-1 1/4 1763 (1800-1 1/4)	5640-1 1/2 1763 (1800-1 1/2)	6000-3 2123 (2200-3)		
ORYON FIX MINIMUMS*					
S-LOC 27	4600-1/2 748 (800-1/2)	4600-3/4 748 (800-3/4)	4600-1 3/4 748 (800-1 3/4)		
CIRCLING C	4640-1 763 (800-1)	4800-1 1/4 923 (1000-1 1/4)	6000-3 2123 (2200-3)		

REIL Rwys 9, 17 and 35 L					
MIRL Rwys 5-23 and 17-35 L					
HIRL Rwy 9-27 L					
FAF to MAP 8.7 NM					
Knots	60	90	120	150	180
Min:Sec	8:42	5:48	4:21	3:29	2:54

HELENA, MONTANA

Amdt 3 23FEB23

HELENA RONI (HLN)

ILS Z or LOC Z RWY 27

46°36'N-111°59'W

NW-1, 10 JUL 2025 to 07 AUG 2025

NW-1, 10 JUL 2025 to 07 AUG 2025

LOC I-HLN 110.1	APP CRS 271°	Rwy Ldg TDZE Apt Elev	9000 3852 3877
---------------------------	------------------------	-----------------------------	---

ILS Z or LOC Z RWY 27
HELENA RGNL (HLN)

ADF or DME required.

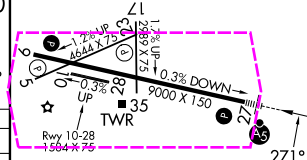
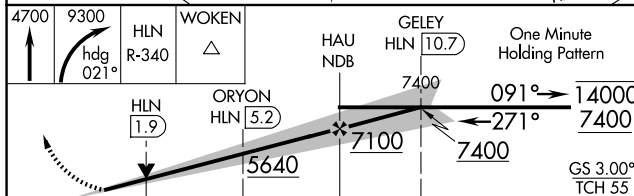
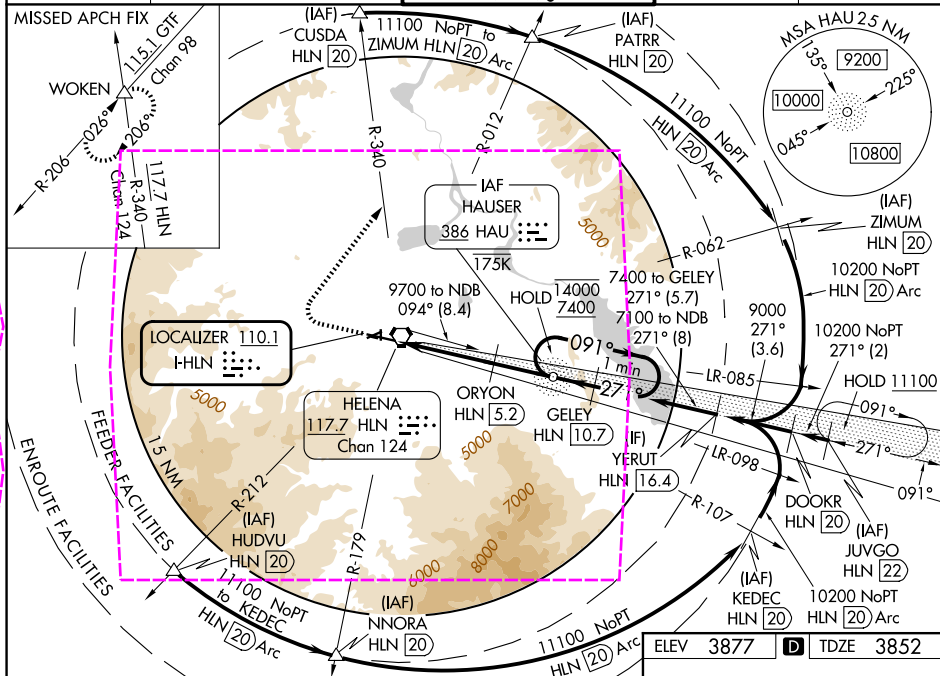
T Circling NA to Kwys 10 and 28. Circling Rwy 5, 23, 35 NA at night. Inop
A table does not apply to S-LOC 27 all Cats. For Inop ALS, increase S-ILS 27
S Cat E visibility to $\frac{3}{4}$ mile, increase ORYON fix minimums: S-LOC 27 Cat C/
W D/E visibility to 2 miles. Circling NA for Cats D and E south of Rwy 9-27.
-16° Holding at HAU NDB authorized for Cat A and B aircraft only. *DME from
 HLN VORTAC. DME use requires simultaneous reception of I-HLN and HLN DME.

MALSR
A5

MISSED APPROACH: Climb to 4700 then climbing right turn to 9300 on heading 021° and on HLN VORTAC R-340 to WOKEN INT and hold, continue climb-in-hold to 9300.

#Missed approach requires minimum climb of 300 feet per NM to 6000; if unable to meet climb gradient, see ILS Y or LOC Y RWY 27.

ATIS 120.4	HELENA APP CON★ 119.5 229.4	HELENA TOWER★ 118.3 (CTAF) 0 257.8	GND CON 121.9	UNICOM 122.95
---------------	--------------------------------	---------------------------------------	------------------	------------------



	-2.2 NM	3.3 NM	3.3 NM	-2.3 NM	
CATEGORY	A	B	C	D	E
S-ILS 27#	4052-1/2 200 (200-1/2)				
S-LOC 27	5640-1 1/4 1788 (1800-1 1/4)	5640-1 1/2 1788 (1800-1 1/2)	5640-3	1788 (1800-3)	
CIRCLING	5640-1 1/4 1763 (1800-1 1/4)	5640-1 1/2 1763 (1800-1 1/2)	6000-3	2123 (2200-3)	
ORYON FIX MINIMUMS*					
S-LOC 27	4600-1/2 748 (800-1/2)	4600-3/4 748 (800-3/4)	4600-1 3/4	748 (800-1 3/4)	
CIRCLING	4640-1 763 (800-1)	4800-1 1/4 923 (1000-1 1/4)	6000-3	2123 (2200-3)	

REIL Rwy's 9, 17 and 35 L					
MIRL Rwy's 5-23 and 17-35 L					
HIRL Rwy 9-27 L					
FAF to MAP 8.7 NM					
Knots	60	90	120	150	180
Min:Sec	8:42	5:48	4:21	3:29	2:54

HELENA, MONTANA

Amdt 3 23FEB23

46°36'N-111°59'W

HELENA RGNL (HLN)

ILS Z or LOC Z RWY 27

NW-1, 07 AUG 2025 to 04 SEP 2025

NW-1, 07 AUG 2025 to 04 SEP 2025