

HELENA, MONTANA

AL-192 (FAA)

25107

LOC I-HLN 110.1	APP CRS 271°	Rwy Idg TDZE Apt Elev 9000 3852 3877
---------------------------	------------------------	--

ILS Y or LOC Y RWY 27

HELENA RGNL (HLN)

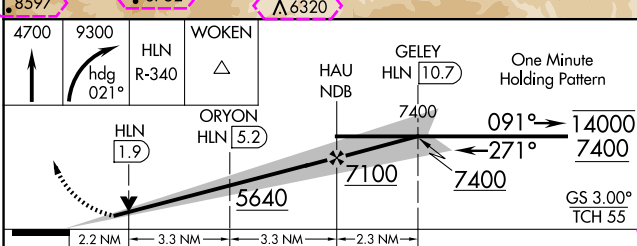
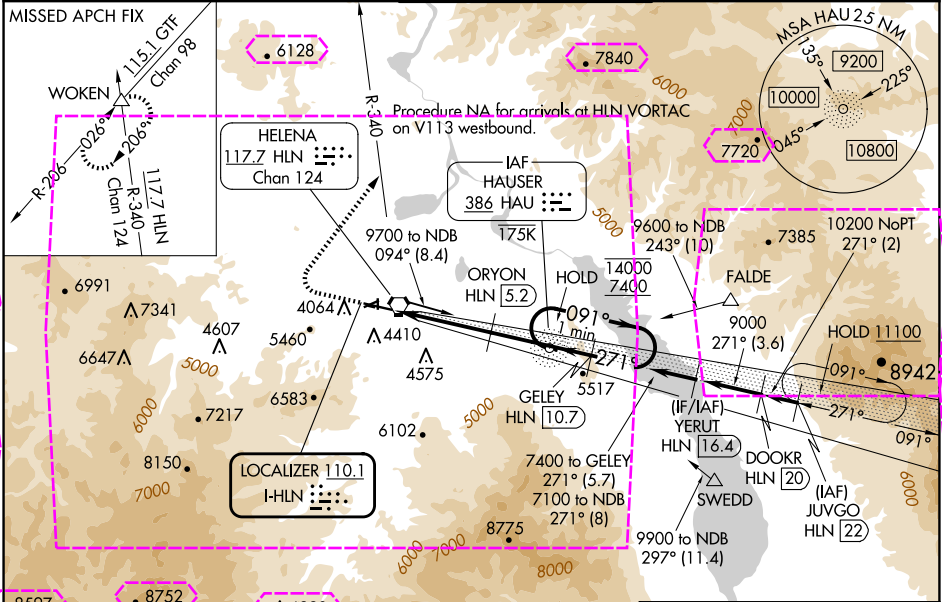
ADF or RADAR required for procedure entry. ADF or DME required.

⚠ Circling NA to Rwy's 10 and 28. Circling Rwy 5, 23, 35 NA at night. Inop table does not apply to S-LOC 27 all Cats. For inop ALS, increase S-ILS 27 all Cats visibility to 1½ SM, ORYON fix minimums: S-LOC 27 Cat C/D/E visibility to 2 SM. Holding at HAU NDB authorized for Cat A and B aircraft only. Circling NA for Cats D and E south of Rwy 9-27.
*DME from HLN VORTAC. DME use requires simultaneous reception of I-HLN and HLN DME.

MALSR

MISSED APPROACH: Climb to 4700 then climbing right turn to 9300 on heading 021° and on HLN VORTAC R-340 to WOKEN INT and hold, continue climb-in-hold to 9300.

ATIS 120.4	HELENA APP CON * 119.5 229.4	HELENA TOWER * 118.3 (CTAF) 0 257.8	GND CON 121.9	UNICOM 122.95
----------------------	--	---	-------------------------	-------------------------



CATEGORY	A	B	C	D	E
S-ILS 27	4496-1⅓ 644 (700-1⅓)				
S-LOC 27	5640-1¼ 1788 (1800-1¼)	5640-1½ 1788 (1800-1½)	5640-3	1788 (1800-3)	
CIRCLING	5640-1¼ 1763 (1800-1¼)	5640-1½ 1763 (1800-1½)	6000-3	2123 (2200-3)	
ORYON FIX MINIMUMS*					
S-LOC 27	4600-½ 748 (800-½)	4600-¾ 748 (800-¾)	4600-1¾	748 (800-1¾)	
CIRCLING	4640-1 763 (800-1)	4800-¼ 923 (1000-¼)	6000-3	2123 (2200-3)	

ELEV 3877 **D** TDZE 3852

REIL Rwy's 9, 17 and 35
MIRL Rwy's 5-23 and 17-35
HIRL Rwy 9-27

FAF to MAP 8.7 NM

Knots	60	90	120	150	180
Min:Sec	8:42	5:48	4:21	3:29	2:54

HELENA, MONTANA

Amdt 4 23FEB23

46°36'N-111°59'W

HELENA RGNL (HLN)

ILS Y or LOC Y RWY 27

NW-1, 10 JUL 2025 to 07 AUG 2025

NW-1, 10 JUL 2025 to 07 AUG 2025

HELENA, MONTANA

AL-192 (FAA)

25219

LOC I-HLN 110.1	APP CRS 271°	Rwy Ldg TDZE Apt Elev 9000 3852 3877
---------------------------	------------------------	--

ILS Y or LOC Y RWY 27

HELENA RGNL (HLN)

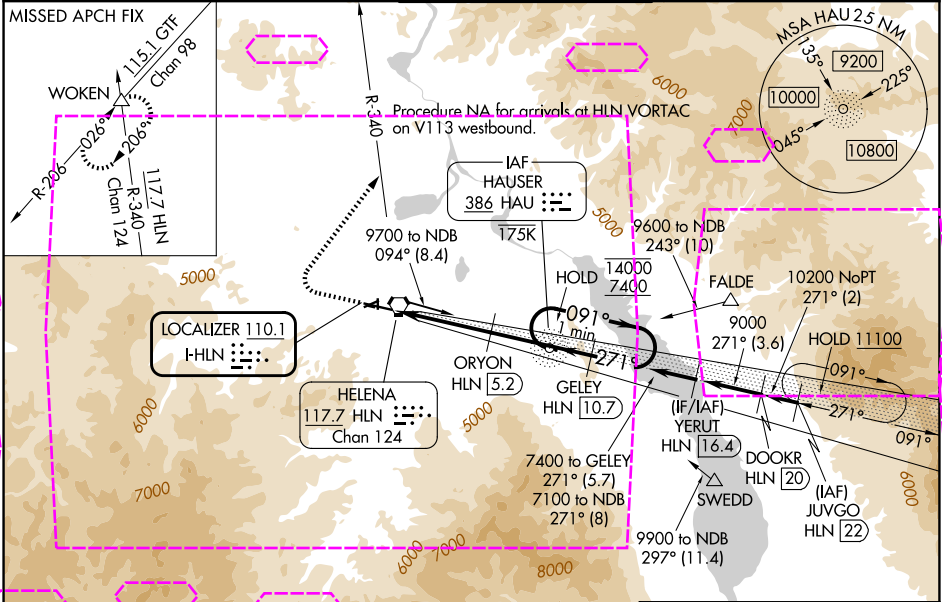
ADF or RADAR required for procedure entry. ADF or DME required.

⚠ Circling NA to Rwy's 10 and 28. Circling Rwy 5, 23, 35 NA at night. Inop table does not apply to S-LOC 27 all Cats. For inop ALS, increase S-ILS 27 all Cats visibility to 1½ SM, ORYON fix minimums: S-LOC 27 Cat C/D/E visibility to 2 SM. Holding at HAU NDB authorized for Cat A and B aircraft only. Circling NA for Cats D and E south of Rwy 9-27.
*DME from HLN VORTAC. DME use requires simultaneous reception of I-HLN and HLN DME.

MALSR

MISSED APPROACH: Climb to 4700 then climbing right turn to 9300 on heading 021° and on HLN VORTAC R-340 to WOKEN INT and hold, continue climb-in-hold to 9300.

ATIS 120.4	HELENA APP CON * 119.5 229.4	HELENA TOWER * 118.3 (CTAF) 0 257.8	GND CON 121.9	UNICOM 122.95
----------------------	--	---	-------------------------	-------------------------



4700	9300	HLN	WOKEN				
↑	hdg 021°	R-340	△				
		ORYON HLN 1.9	ORYON HLN 5.2	HAU NDB	GELEY HLN 10.7	One Minute Holding Pattern	
		5640			7400	091° →	14000
		7100			7400	← 271°	7400
					7400		GS 3.00° TCH 55
2.2 NM		3.3 NM	3.3 NM	2.3 NM			
CATEGORY	A		B	C	D	E	
S-ILS 27	4496-1⅓ 644 (700-1⅓)						
S-LOC 27	5640-1¼ 1788 (1800-1¼)	5640-1½ 1788 (1800-1½)	5640-3		1788 (1800-3)		
CIRCLING	5640-1¼ 1763 (1800-1¼)	5640-1½ 1763 (1800-1½)	6000-3		2123 (2200-3)		
ORYON FIX MINIMUMS*							
S-LOC 27	4600-½ 748 (800-½)	4600-¾ 748 (800-¾)	4600-1¾		748 (800-1¾)		
CIRCLING	4640-1 763 (800-1)	4800-1¼ 923 (1000-¼)	6000-3		2123 (2200-3)		

ELEV 3877	TDZE 3852
REIL Rwy's 9, 17 and 35	MIRL Rwy's 5-23 and 17-35
HRL Rwy 9-27	FAF to MAP 8.7 NM
Knots	60 90 120 150 180
Min:Sec	8:42 5:48 4:21 3:29 2:54

HELENA, MONTANA

Amdt 4 23FEB23

46°36'N-111°59'W

HELENA RGNL (HLN)

ILS Y or LOC Y RWY 27