

HELENA, MONTANA

AL-192 (FAA)

25107

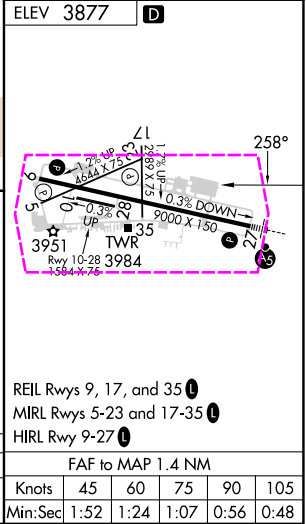
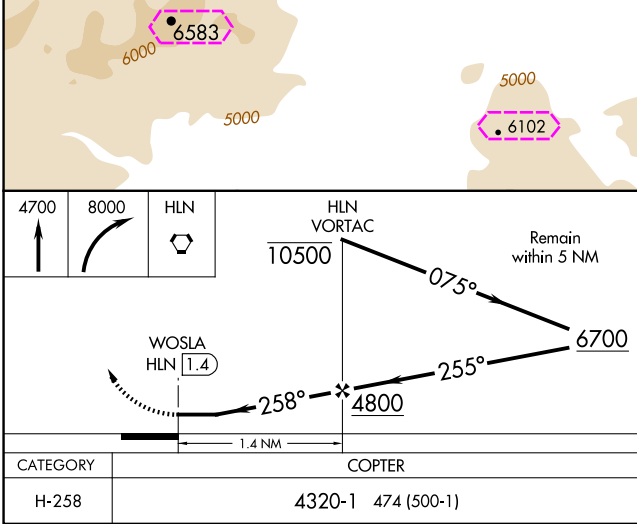
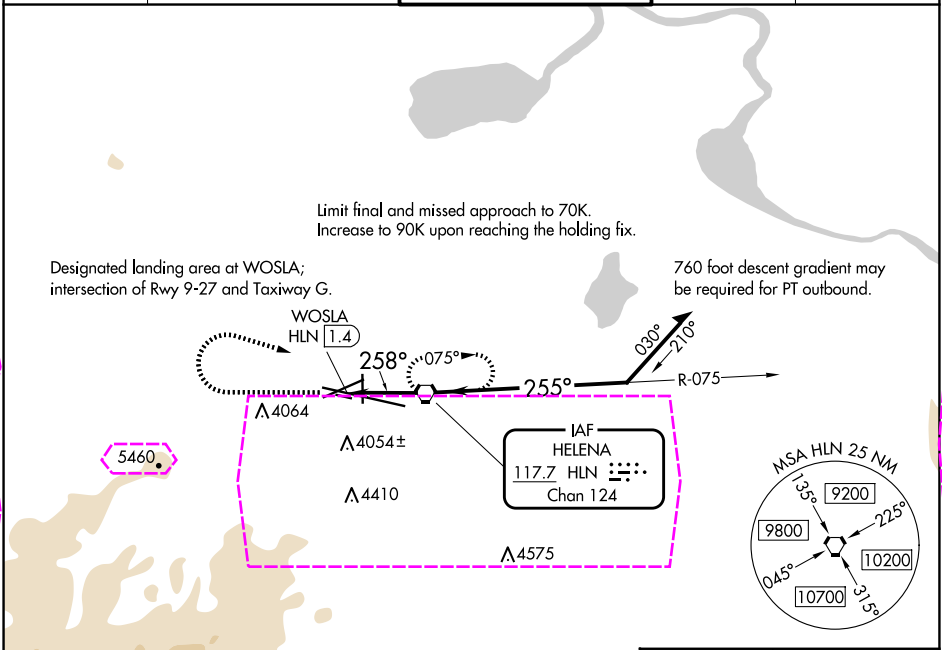
VORTAC HLN 117.7 Chan 124	APP CRS 258°	Rwy Idg Surface Elev 3846 Apt Elev 3877	N/A
---	------------------------	---	-----

COPTER VOR 258°

HELENA RGNL (HLN)

NA When local altimeter setting not received, procedure NA.	MISSED APPROACH: Climb to 4700 then climbing right turn to 8000 direct HLN VORTAC and hold, continue climb-in-hold to 8000.
---	---

ATIS 120.4	HELENA APP CON ★ 119.5 229.4	HELENA TOWER ★ 118.3 (CTAF) 257.8	GND CON 121.9	UNICOM 122.95
----------------------	--	---	-------------------------	-------------------------



HELENA, MONTANA

AL-192 (FAA)

25219

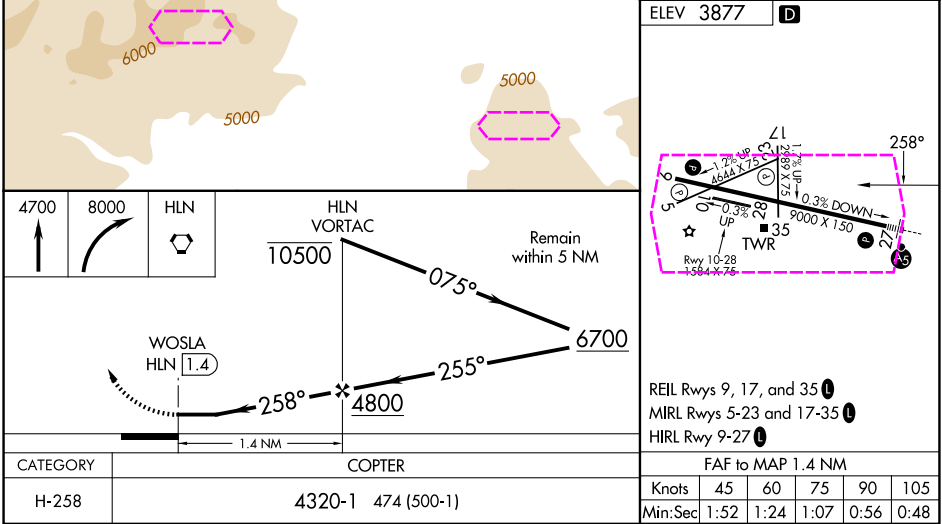
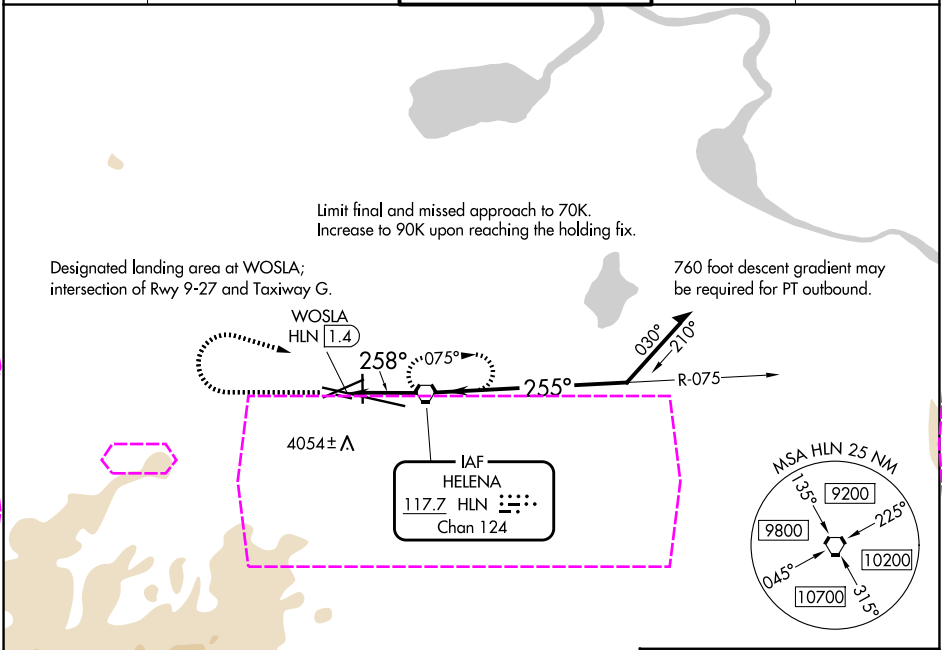
VORTAC HLN 117.7 Chan 124	APP CRS 258°	Rwy Ldg Surface Elev 3846 Apt Elev 3877	N/A
---	------------------------	---	-----

COPTER VOR 258°

HELENA RGNL (HLN)

NA 16°C	When local altimeter setting not received, procedure NA.	MISSED APPROACH: Climb to 4700 then climbing right turn to 8000 direct HLN VORTAC and hold, continue climb-in-hold to 8000.
------------	--	---

ATIS 120.4	HELENA APP CON ★ 119.5 229.4	HELENA TOWER ★ 118.3 (CTAF) 257.8	GND CON 121.9	UNICOM 122.95
----------------------	--	---	-------------------------	-------------------------



HELENA, MONTANA

Orig-A 23FEB23

46°36'N-111°59'W

HELENA RGNL (HLN) COPTER VOR 258°

NW-1, 07 AUG 2025 to 04 SEP 2025

NW-1, 07 AUG 2025 to 04 SEP 2025