

HARTFORD, CONNECTICUT

AL-189 (FAA)

23166

VOR/DME HFD 114.9 Chan 96	APP CRS 334°	Rwy Idg TDZE Apt Elev 18	N/A N/A 18
---	------------------------	--	-------------------------

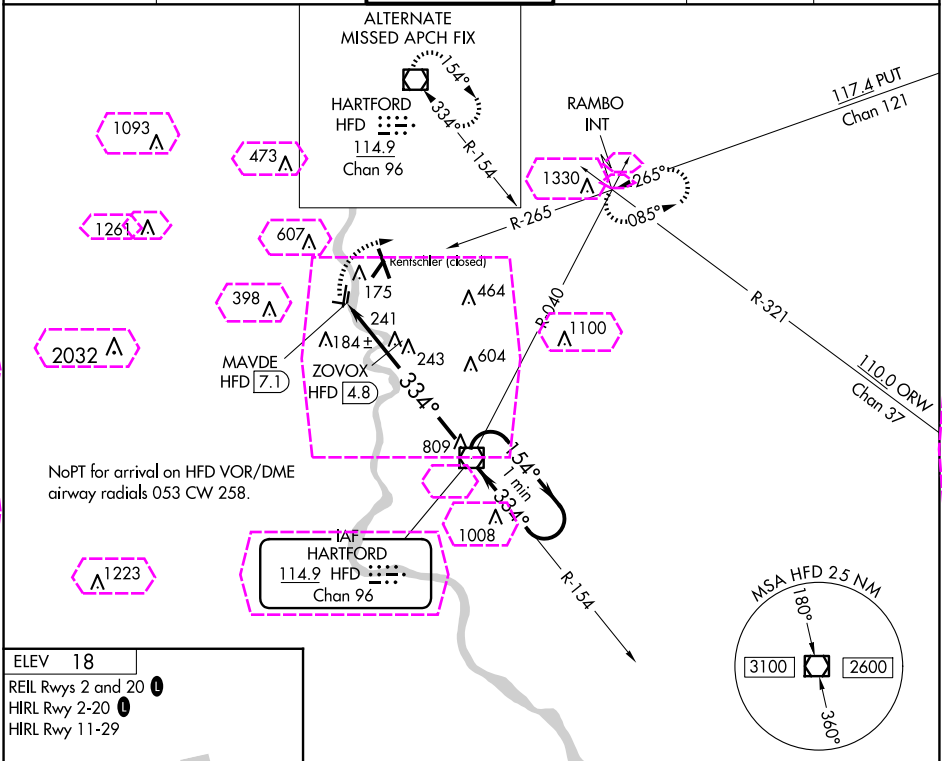
VOR-A

HARTFORD-BRAINARD (HF'D)

▼ Helicopter visibility reduction below 1 SM NA. When Rwy 2 VGSi inop, Circling to Rwy 2 NA at night. Circling to Rwy 11 and 29 NA at night. When Rwy 20 VGSi inop, Circling to Rwy 20 NA at night.

MISSED APPROACH: Climbing right turn to 2500 on heading 100° and PUT VOR/DME R-265 to RAMBO INT and hold.

ATIS 126.45	BRADLEY APP CON 127.8 269.325	BRAINARD TOWER ★ 119.6 (CTAF) 0 248.2	GND CON 121.6	CLNC DEL 121.6	UNICOM 122.95
-----------------------	---	---	-------------------------	--------------------------	-------------------------



--	--

VOR/DME HFD 114.9 Chan 96	APP CRS 334°	Rwy Ldg TDZE Apt Elev	N/A N/A 18
---	------------------------	-----------------------------	---------------------------------------

VOR-A

HARTFORD-BRAINARD (HFD)

T Helicopter visibility reduction below 1 SM NA. When Rwy 2 VGSI inop, Circling to Rwy 2 NA at night. Circling to Rwy 11 and 29 NA at night.
A When Rwy 20 VGSI Inop, Circling to Rwy 20 NA at night.

MISSED APPROACH: Climbing right turn to 2500 on heading 100° and PUT VOR/DME R-265 to RAMBO INT and hold.

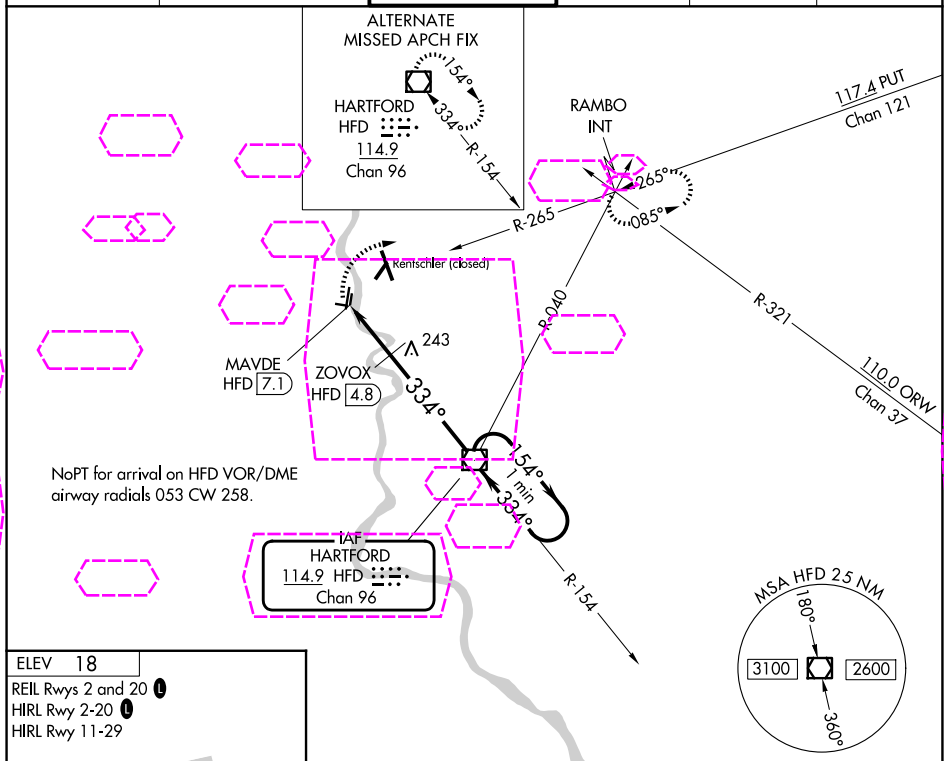
ATIS
126,45

YANKEE APP CON
127.8 269,325

BRAINARD TOWER ★
119.6 (CTAF) **L** 248.2

GND CON
121.6

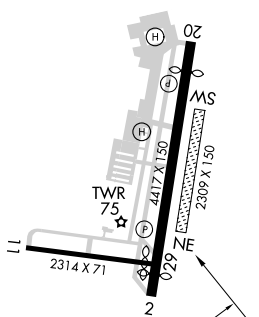
CLNC DEL
121,6

UNICOM
122.95

ELEV	18
------	----

REIL Rwy 2 and 20 **L**HIRL Rwy 2-20 **L**

HIRL Rwy 11-29



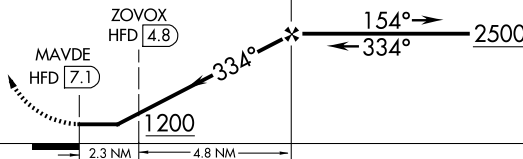
2500

PUT

RAMB

HFD
VOR/DME

One Minute Holding Pattern



CATEGORY	A	B	C	D
CIRCLING	1200-1¼ 1182 (1200-1¼)	1200-1½ 1182 (1200-1½)	1200-3	1182 (1200-3)
ZOVOX FIX MINIMUMS (DME REQUIRED)				
CIRCLING	580-1 562 (600-1)	900-1¼ 882 (900-1¼)	920-2¾ 902 (1000-2¾)	920-3 902 (1000-3)

HARTFORD, CONNECTICUT

Amdt 10B 09SEP21

41°44'N-72°39'W

HARTFORD-BRAINARD (HFD)

VOR-A