

HARTFORD, CONNECTICUT

AL-189 (FAA)

23222

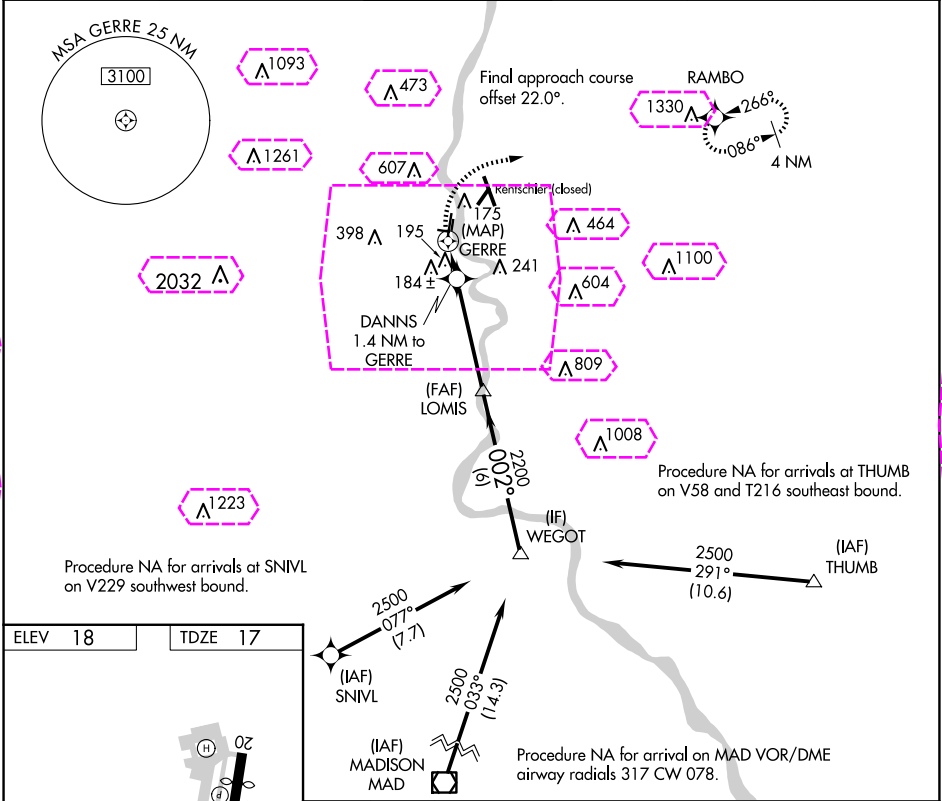
APP CRS	Rwy Idg	4006
002°	TDZE	17
	Apt Elev	18

RNAV (GPS) RWY 2

HARTFORD-BRAINARD (HF'D)

RNP APCH.	<p>⚠ Circling NA at night. Rwy 2 helicopter visibility reduction below 1 SM NA. Straight-in Rwy 2 at night, operational VGSI required, remain on or above VGSI glidepath until threshold.</p>	MISSED APPROACH: Climbing right turn to 2500 direct RAMBO and hold.
-----------	-----------------------------------------------------------------------------------------------------------------------------------------------------------------------------------------------	---------------------------------------------------------------------

ATIS 126.45	BRADLEY APP CON 127.8 269.325	BRAINARD TOWER ★ 119.6 (CTAF) 0 248.2	GND CON 121.6	CLNC DEL 121.6	UNICOM 122.95
----------------	----------------------------------	------------------------------------------	------------------	-------------------	------------------



Visual Segment - Obstacles.							
2500	RAMBO	WEGOT					
<div> <div>GERRE</div> <div>DANNS 1.4 NM to GERRE</div> <div>LOMIS</div> <div>2200</div> <div>002°</div> <div>2500</div> </div>							
<div> <div>0.3</div> <div>1.4 NM</div> <div>4.1 NM</div> <div>6 NM</div> </div>							
CATEGORY	A		B				
LNAV MDA	460-1 443 (500-1)		460-1 ³ / ₈ 443 (500-1 ³ / ₈)				
CIRCLING	580-1 562 (600-1)	900-1 ¹ / ₄ 882 (900-1 ¹ / ₄)	920-2 ³ / ₄ 902 (1000-2 ³ / ₄)	920-3 902 (1000-3)			

HARTFORD, CONNECTICUT

Orig-D 09SEP21

41°44'N-72°39'W

HARTFORD-BRAINARD (HF'D)

RNAV (GPS) RWY 2

HARTFORD, CONNECTICUT

AL-189 (FAA)

25219

APP CRS	Rwy Ldg	4006
002°	TDZE	17
	Apt Elev	18

RNAV (GPS) RWY 2

HARTFORD-BRAINARD (HF'D)

RNP APCH.		MISSED APPROACH: Climbing right turn to 2500 direct RAMBO and hold.		
Circling NA at night. Rwy 2 helicopter visibility reduction below 1 SM NA. Straight-in Rwy 2 at night, operational VGSI required, remain on or above VGSI glidepath until threshold.				
ATIS	YANKEE APP CON	BRAINARD TOWER *	GND CON	CLNC DEL
126.45	127.8 269.325	119.6 (CTAF) 0 248.2	121.6	121.6
				UNICOM
				122.95

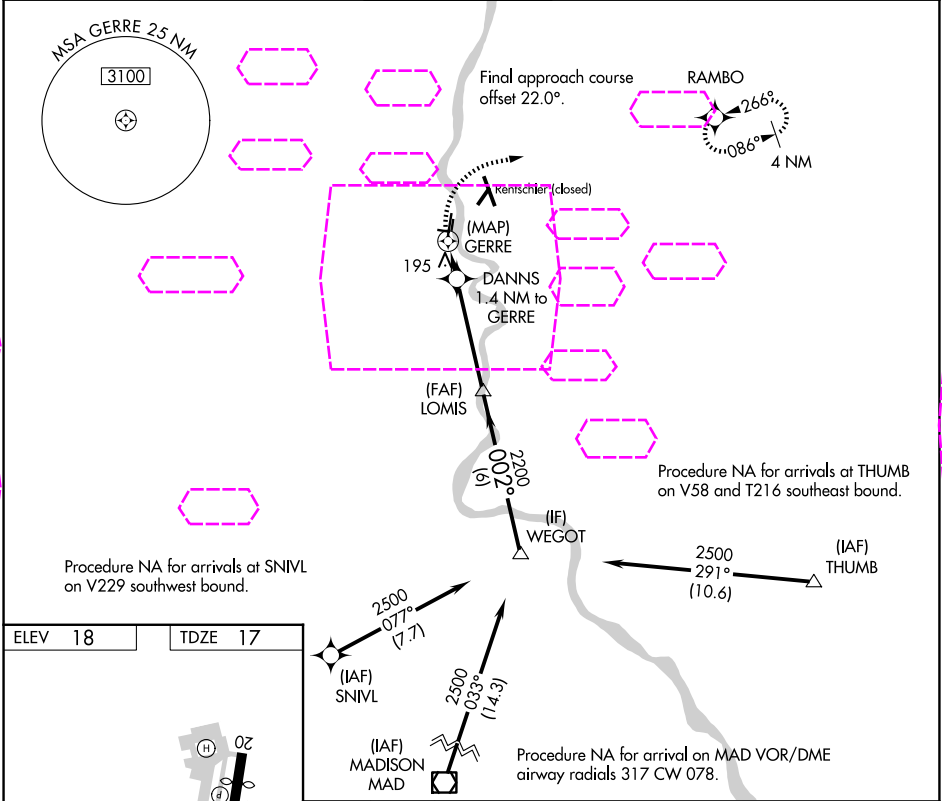


Diagram illustrating a runway layout with various navigation aids and dimensions:

- Runway 2 (RWY 2) and Runway 20 (RWY 20) are shown as a single runway with a width of 2314 X 71.
- Runway 11-29 (RWY 11-29) is shown as a parallel runway with a width of 4417 X 150.
- Navigation aids include TWR 75, HIRL, and a 029° heading.
- Dimensions are provided for the runways: 2314 X 71 and 4417 X 150.

Visual Segment - Obstacles.

Diagram illustrating a Visual Segment - Obstacles. The path starts at GERRE, passes through DANNS (1.4 NM to GERRE), LOMIS, and ends at WEGOT. Obstacle heights are indicated: 680, 2200, and 2500. A heading of 002° is shown for the segment from LOMIS to WEGOT. A distance of 0.3 NM is shown between GERRE and DANNS, and 1.4 NM between DANNS and LOMIS. A total distance of 4.1 NM is shown from GERRE to LOMIS, and 6 NM from LOMIS to WEGOT.

CATEGORY	A	B	C	D
LNAV MDA	460-1	443 (500-1)	460-1 $\frac{3}{8}$	443 (500-1 $\frac{3}{8}$)
CIRCLING	580-1 562 (600-1)	900-1 $\frac{1}{4}$ 882 (900-1 $\frac{1}{4}$)	920-2 $\frac{3}{4}$ 902 (1000-2 $\frac{3}{4}$)	920-3 902 (1000-3)

HARTFORD, CONNECTICUT
Orig-D 09SEP21

41°44'N-72°39'W

HARTFORD-BRAINARD (HF'D)

RNAV (GPS) RWY 2

NE-1, 07 AUG 2025 to 04 SEP 2025

NE-1, 07 AUG 2025 to 04 SEP 2025