

HARTFORD, CONNECTICUT

AL-189 (FAA)

24025

LOC I-HFD <b>109.7</b>	APP CRS <b>002°</b>	Rwy Idg TDZE Apt Elev	<b>4006</b> <b>17</b> <b>18</b>
---------------------------	------------------------	-----------------------------	---------------------------------------

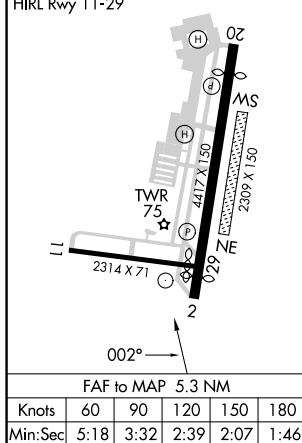
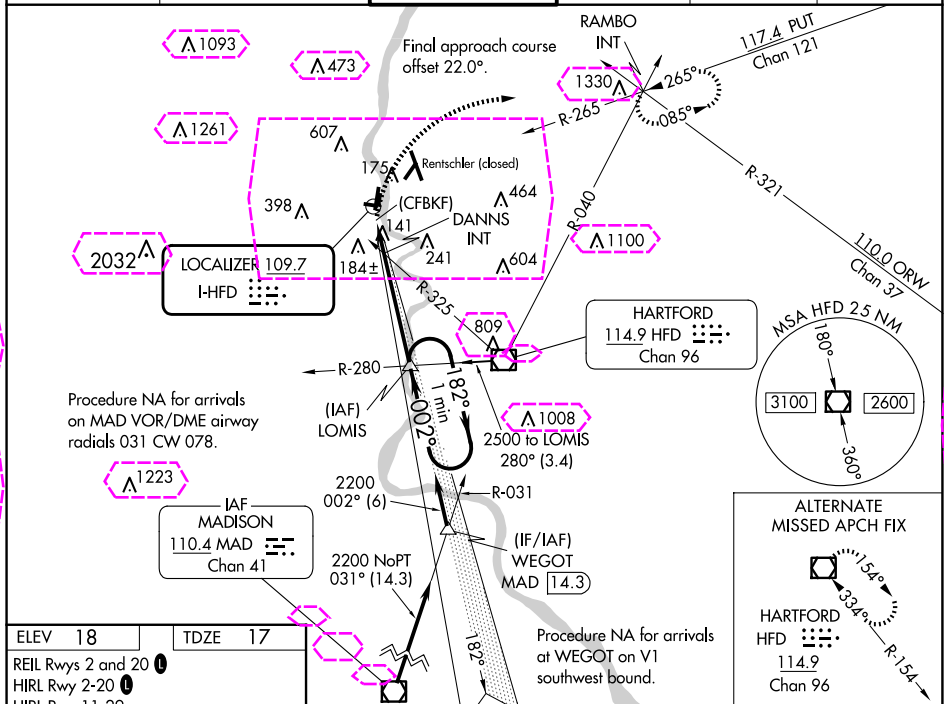
# LDA RWY 2

HARTFORD-BRAINARD (HFD)

▼ Helicopter visibility reduction below 1 SM NA. Night landing: Rwy 11, 20, 29 NA. Night landing: Rwy 2 operational VGSI required, remain on or above VGSI glidepath until threshold.

MISSED APPROACH: Climbing right turn to 2500 on heading 090° and PUT VOR/DME R-265 to RAMBO INT and hold.

ATIS <b>126.45</b>	BRADLEY APP CON <b>127.8 269.325</b>	BRAINARD TOWER ★ <b>119.6 (CTAF) 0 248.2</b>	GND CON <b>121.6</b>	CLNC DEL <b>121.6</b>	UNICOM <b>122.95</b>
-----------------------	---	---	-------------------------	--------------------------	-------------------------



2500 hdg 090°	PUT R-265	RAMBO INT	VGSI and descent angles not coincident (VGSI Angle 4.00/TCH 42).	LOMIS	One Minute Holding Pattern
182°	002°	2500	2200	3.47° TCH 45	
0.5	1.2 NM	4.1 NM			
CATEGORY	A	B	C	D	
S-2	680-1	663 (700-1)	680-1 7/8	663 (700-1 7/8)	
CIRCLING	680-1	900-1 1/4	920-2 3/4	920-3	
	662 (700-1)	882 (900-1 1/4)	902 (1000-2 3/4)	902 (1000-3)	
DANNIS FIX MINIMUMS (DUAL VOR RECEIVERS REQUIRED)					
S-2	460-1	443 (500-1)	460-1 3/8	443 (500-1 3/8)	
CIRCLING	580-1	900-1 1/4	920-2 3/4	920-3	
	562 (600-1)	882 (900-1 1/4)	902 (1000-2 3/4)	902 (1000-3)	

HARTFORD, CONNECTICUT  
Amdt 2C 09SEP21

41°44'N-72°39'W

HARTFORD-BRAINARD (HFD)  
LDA RWY 2

HARTFORD, CONNECTICUT

AL-189 (FAA)

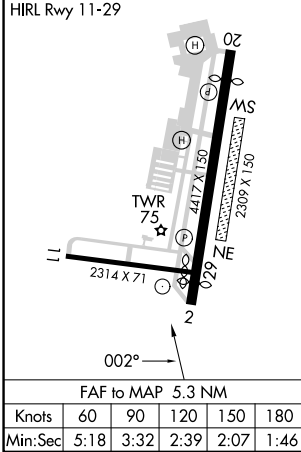
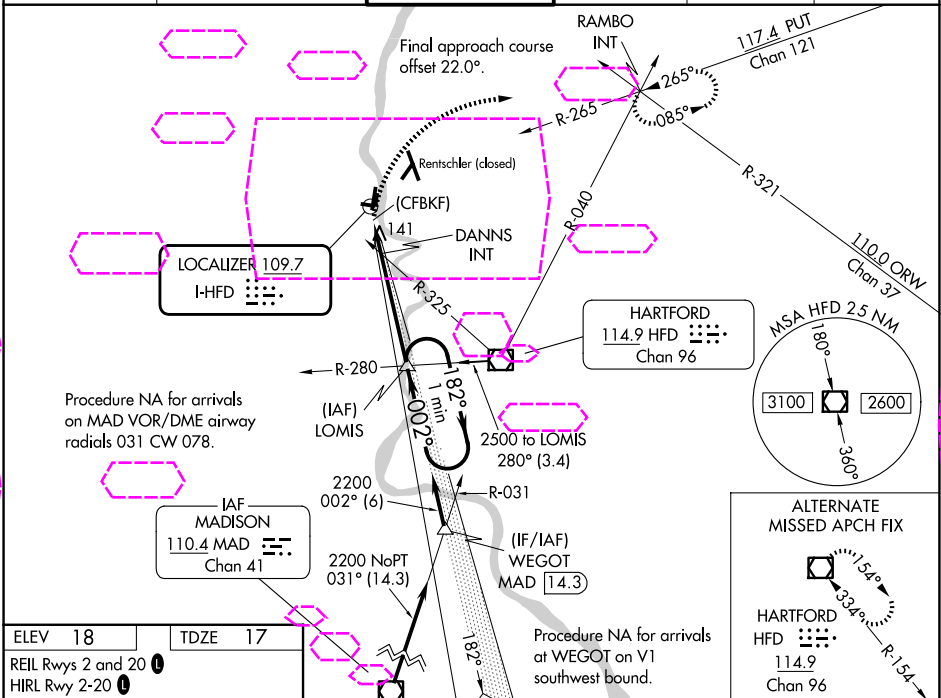
25219

LOC I-HFD <b>109.7</b>	APP CRS <b>002°</b>	Rwy Ldg TDZE Apt Elev	<b>4006</b> <b>17</b> <b>18</b>
---------------------------	------------------------	-----------------------------	---------------------------------------

**LDA RWY 2**  
HARTFORD-BRAINARD (HFD)

**▼** Helicopter visibility reduction below 1 SM NA. Night landing: Rwy 11, 20, 29 NA. Night landing: Rwy 2 operational VGSI required, remain on or above VGSI glidepath until threshold.  
**▲** MISSED APPROACH: Climbing right turn to 2500 on heading 090° and PUT VOR/DME R-265 to RAMBO INT and hold.

ATIS <b>126.45</b>	YANKEE APP CON <b>127.8 269.325</b>	BRAINARD TOWER ★ <b>119.6 (CTAF) 0 248.2</b>	GND CON <b>121.6</b>	CLNC DEL <b>121.6</b>	UNICOM <b>122.95</b>
-----------------------	--	---	-------------------------	--------------------------	-------------------------



2500	PUT R-265	RAMBO INT	VGSI and descent angles not coincident (VGSI Angle 4.00/TCH 42).	LOMIS	One Minute Holding Pattern
182°	002°	2200	3.47°	TCH 45	
0.5	1.2 NM	4.1 NM			
CATEGORY	A	B	C	D	
S-2	680-1	663 (700-1)	680-1 7/8	663 (700-1 7/8)	
CIRCLING	680-1	900-1 1/4	920-2 3/4	920-3	
	662 (700-1)	882 (900-1 1/4)	902 (1000-2 3/4)	902 (1000-3)	
DANNIS FIX MINIMUMS (DUAL VOR RECEIVERS REQUIRED)					
S-2	460-1	443 (500-1)	460-1 3/8	443 (500-1 3/8)	
CIRCLING	580-1	900-1 1/4	920-2 3/4	920-3	
	562 (600-1)	882 (900-1 1/4)	902 (1000-2 3/4)	902 (1000-3)	

HARTFORD, CONNECTICUT  
Amdt 2C 09SEP21

41°44'N-72°39'W

HARTFORD-BRAINARD (HFD)  
**LDA RWY 2**

NE-1, 07 AUG 2025 to 04 SEP 2025

NE-1, 07 AUG 2025 to 04 SEP 2025