

## COASTAL NINE DEPARTURE

ATIS 126.45  
GND CON  
121.6  
BRAINARD TOWER ★  
119.6 (CTAF) 248.2  
BRADLEY DEP CON  
127.8 269.325

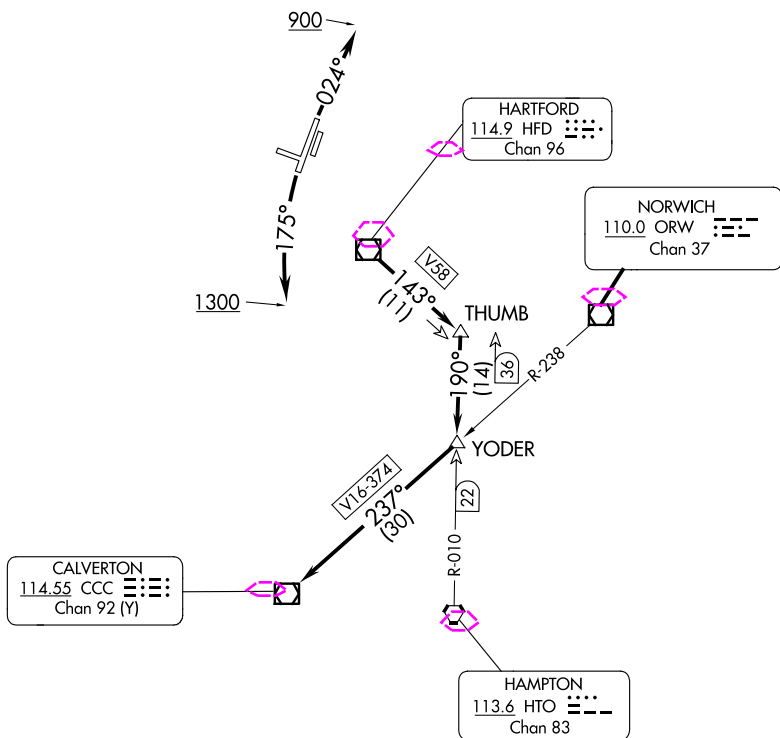
**TOP ALTITUDE:**  
3000

TAKEOFF MINIMUMS:

Rwys 11, 29: NA-Environmental.

Rwy 2: Standard.

Rwy 20: 200-1½ or standard with minimum climb of 220' per NM to 300, or alternatively, with standard takeoff minimums and a normal 200' per NM climb gradient, takeoff must occur no later than 1500' prior to DER.



NOTE: RADAR required.

NOTE: Initial departure headings are predicated on avoiding noise sensitive areas, flight crew awareness and compliance is important in minimizing noise impacts on surrounding communities.

(NARRATIVE ON FOLLOWING PAGE)

NOTE: Chart not to scale.

## COASTAL NINE DEPARTURE

(CSTL9.CCC) 12AUG21

HARTFORD, CONNECTICUT  
HARTFORD-BRAINARD (HFD)

NE-1, 10 JUL 2025 to 07 AUG 2025

NE-1, 10 JUL 2025 to 07 AUG 2025

(CSTL9.CCC) 25219

AL-189 (FAA)

HARTFORD-BRAINARD (HFD)  
HARTFORD, CONNECTICUT

## COASTAL NINE DEPARTURE

ATIS 126.45  
GND CON  
121.6  
BRAINARD TOWER ★  
119.6 (CTAE) 248.2  
YANKEE DEP CON  
127.8 269.325

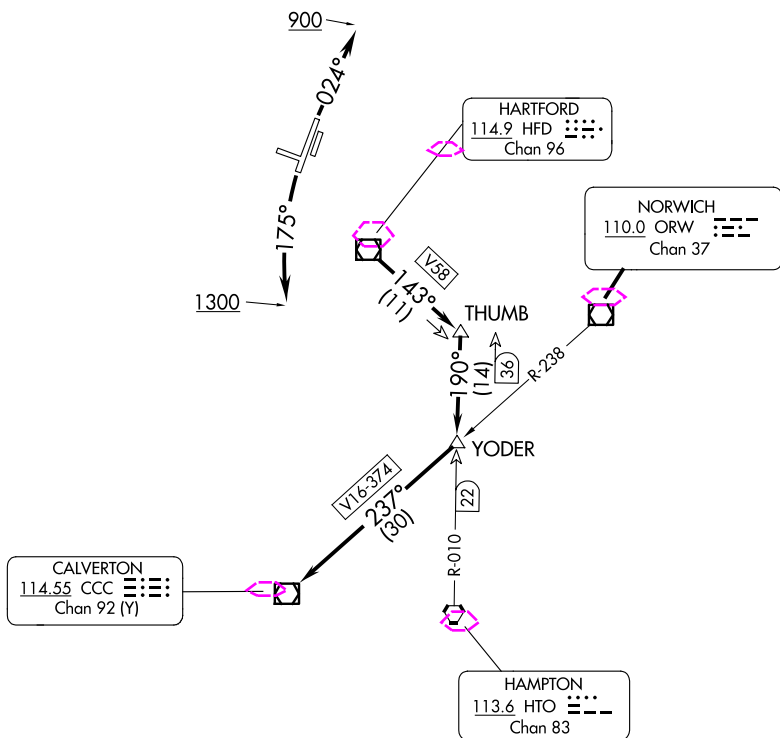
**TOP ALTITUDE:**  
**3000**

## TAKEOFF MINIMUMS:

Rwys 11, 29: NA-Environmental.

Rwy 2: Standard.

Rwy 20: 200-1 $\frac{3}{8}$  or standard with minimum climb of 220' per NM to 300, or alternatively, with standard takeoff minimums and a normal 200' per NM climb gradient, takeoff must occur no later than 1500' prior to DER.



NOTE: RADAR required.

NOTE: Initial departure headings are predicated on avoiding noise sensitive areas, flight crew awareness and compliance is important in minimizing noise impacts on surrounding communities.

(CONTINUED ON FOLLOWING PAGE)

NOTE: Chart not to scale.

## COASTAL NINE DEPARTURE

(CSTL9.CCC) 12AUG21

HARTFORD, CONNECTICUT  
HARTFORD-BRAINARD (HFD)

NE-1, 07 AUG 2025 to 04 SEP 2025

NE-1, 07 AUG 2025 to 04 SEP 2025