

HARRISBURG, PENNSYLVANIA

AL-188 (FAA)

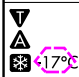
24193

WAAS CH 78013 W31A	APP CRS 308°	Rwy Idg 8129 TDZE 308 Apt Elev 310
--	------------------------	---

RNAV (GPS) RWY 31

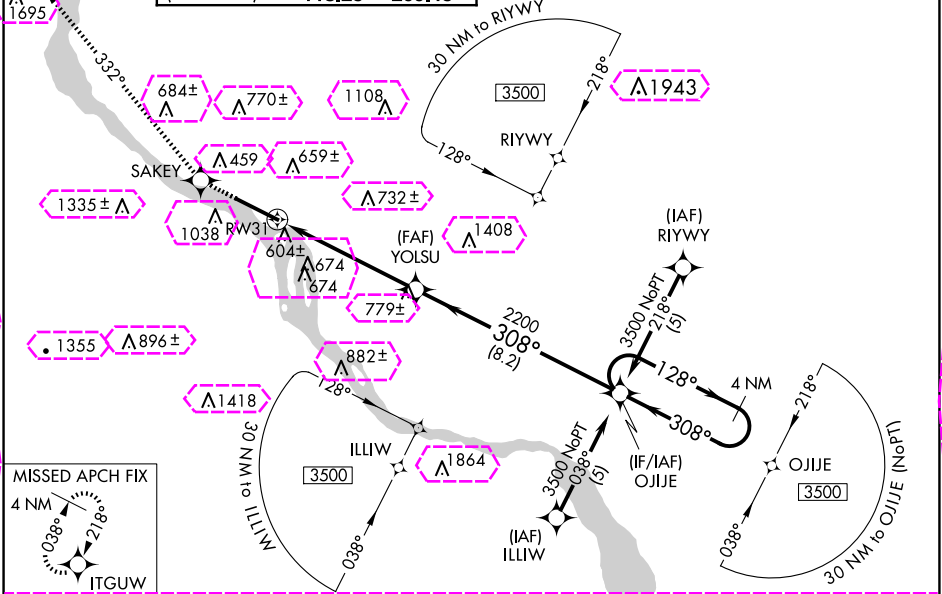
HARRISBURG INTL (MDT)

RNP APCH - GPS.

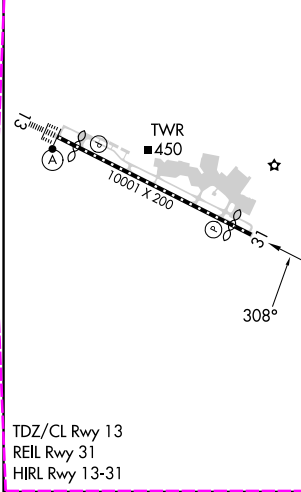
 Circling NA south of Rwy 13-31. For uncompensated Baro-VNAV systems, LNAV/VNAV NA below -15°C or above 48°C.

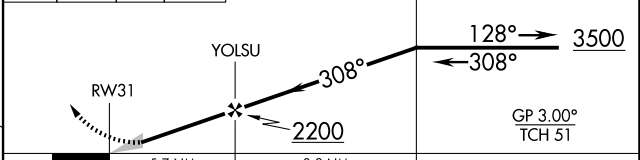
MISSED APPROACH: Climb to 3500 direct SAKEY and on track 332° to ITGUW and hold.

ATIS 118.8	HARRISBURG APP CON (080°-179°) 126.45 281.525 (180°-329°) 124.1 273.525 (330°-079°) 118.25 269.45	HARRISBURG INTL TOWER 124.8 269.35	GND CON 121.7 348.6
----------------------	---	--	-------------------------------



ELEV 310	D	TDZE 308
----------	----------	----------



3500	SAKEY	tr 332°	ITGUW	VGSI and RNAV glidepath not coincident (VGSI Angle 3.00/TCH 51).	4 NM Holding Pattern
					
CATEGORY	A		B	C	D
LPV DA			558/50	250 (300-1)	
LNAV/VNAV DA			921-2¼	613 (700-2¼)	
LNAV MDA	1100/55 792 (800-1)	1100/60 792 (800-1¼)	1100-2¼ 792 (800-2¼)	1100-2½ 792 (800-2½)	
CIRCLING	1100-1 790 (800-1)	1100-1¼ 790 (800-1¼)	1100-2¼ 790 (800-2¼)	1440-3 1130 (1200-3)	

HARRISBURG, PENNSYLVANIA
Amdt 1B 25JAN24

40°12'N-76°46'W

RNAV (GPS) RWY 31

HARRISBURG, PENNSYLVANIA

AL-188 (FAA)

25219

WAAS CH 78013 W31A	APP CRS 308°	Rwy Ldg TDZE 308 Apt Elev 310
--	------------------------	---

RNAV (GPS) RWY 31

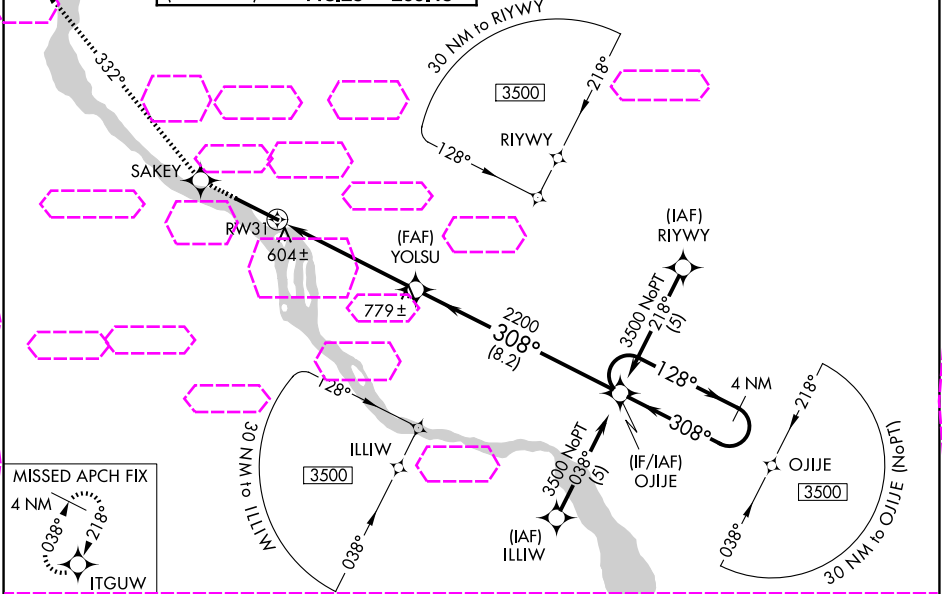
HARRISBURG INTL (MDT)

RNP APCH - GPS.

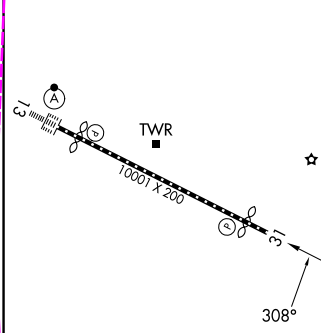
⚠ Circling NA south of Rwy 13-31. For uncompensated Baro-VNAV systems, LNAV/VNAV NA below -15°C or above 48°C.

⚠ MISSED APPROACH: Climb to 3500 direct SAKEY and on track 332° to ITGUW and hold.

ATIS 118.8	HARRISBURG APP CON (080°-179°) 126.45 281.525 (180°-329°) 124.1 273.525 (330°-079°) 118.25 269.45	HARRISBURG INTL TOWER 124.8 269.35	GND CON 121.7 348.6
----------------------	---	--	-------------------------------



ELEV 310	TDZE 308
----------	----------



3500	SAKEY	fr 332°	ITGUW	VGSI and RNAV glidepath not coincident (VGSI Angle 3.00/TCH 51).	4 NM Holding Pattern
					OJJE
					128° → 3500
					← 308°
					GP 3.00° TCH 51
					YOLSU
					2200
					5.7 NM
					8.2 NM
CATEGORY	A	B	C	D	
LPV DA		558/50	250 (300-1)		
LNAV/VNAV DA		921-2¼	613 (700-2¼)		
LNAV MDA	1100/55 792 (800-1)	1100/60 792 (800-1¼)	1100-2¼ 790 (800-2¼)	1100-2½ 792 (800-2½)	
CIRCLING	1100-1 790 (800-1)	1100-1¼ 790 (800-1¼)	1100-2¼ 790 (800-2¼)	1440-3 1130 (1200-3)	

HARRISBURG, PENNSYLVANIA
Amdt 1B 25JAN24

40°12'N-76°46'W

RNAV (GPS) RWY 31