

HARRISBURG, PENNSYLVANIA

AL-188 (FAA)

24193

WAAS CH <b>86313</b> <b>W13A</b>	APP CRS <b>128°</b>	Rwy Idg TDZE <b>308</b> Apt Elev <b>310</b>	<b>8070</b>
--	------------------------	---	-------------

# RNAV (GPS) RWY 13

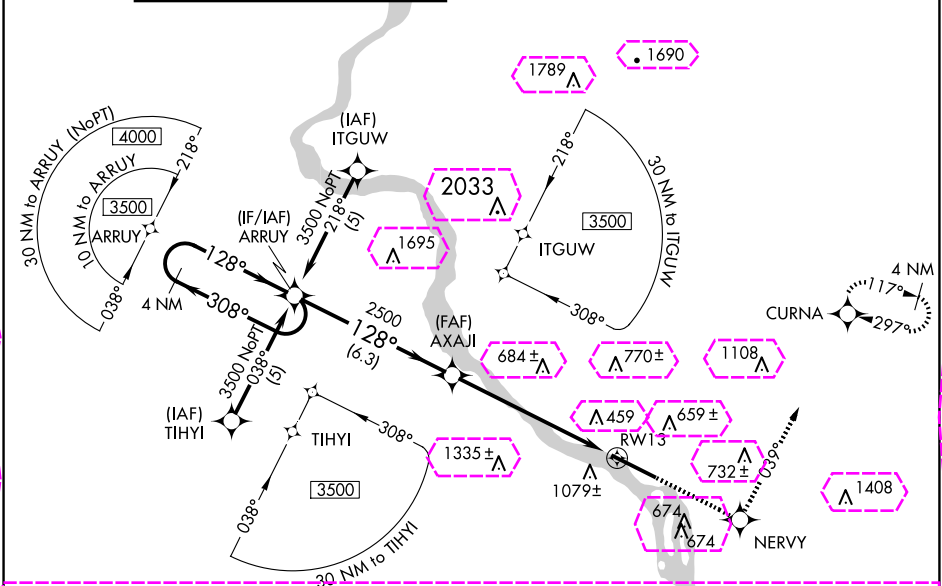
HARRISBURG INTL (MDT)

**⚠** Circling NA south of Rwy 13-31. For uncompensated Baro-VNAV systems, LNAV/VNAV NA below -1.5°C (5°F) or above 48°C (118°F). DME/DME RNP-0.3 NA. Inop table does not apply to LNAV/VNAV all Cats.

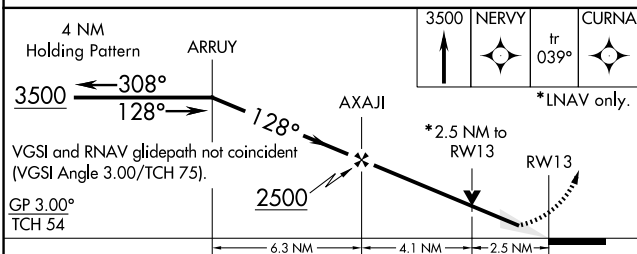
**ALSF-2**

**MISSED APPROACH:** Climb to 3500 direct NERVY and via track 039° to CURNA and hold, continue climb-in-hold to 3500.

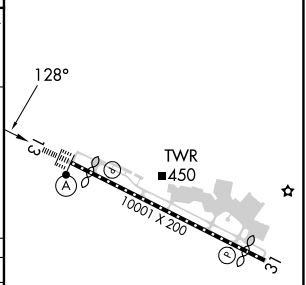
ATIS <b>118.8</b>	HARRISBURG APP CON (080°-179°) <b>126.45</b> <b>281.525</b> (180°-329°) <b>124.1</b> <b>273.525</b> (330°-079°) <b>118.25</b> <b>269.45</b>	HARRISBURG INTL TOWER <b>124.8</b> <b>269.35</b>	GND CON <b>121.7</b> <b>348.6</b>
----------------------	--	---	--------------------------------------



ELEV 310	<b>D</b>	TDZE 308
----------	----------	----------



CATEGORY	A	B	C	D
LPV DA		558/24	250 (300-1/2)	
LNAV/VNAV DA		1572-5	1264 (1300-5)	
LNAV MDA	1180/24 872 (900-1/2)	1180/40 872 (900-3/4)	1180-2 872 (900-2)	1180-2 1/4 872 (900-2 1/4)
CIRCLING	1180-1 870 (900-1)	1180-1 1/4 870 (900-1 1/4)	1180-2 1/2 870 (900-2 1/2)	1440-3 1130 (1200-3)



HARRISBURG, PENNSYLVANIA

AL-188 (FAA)

25219

WAAS	APP CRS	Rwy Ldg	8070
CH 86313	128°	TDZE	308
W13A		Apt Elev	310

# RNAV (GPS) RWY 13

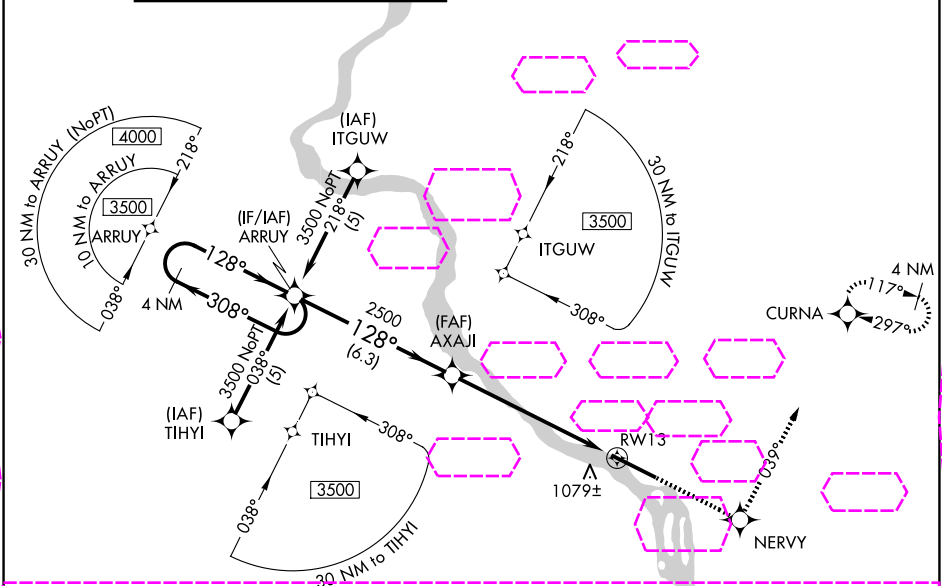
HARRISBURG INTL (MDT)

**⚠** Circling NA south of Rwy 13-31. For uncompensated Baro-VNAV systems, LNAV/VNAV NA below -1.5°C (5°F) or above 48°C (118°F). DME/DME RNP-0.3 NA. Inop table does not apply to LNAV/VNAV all Cats.

**ALSF-2**

**MISSED APPROACH:** Climb to 3500 direct NERVY and via track 039° to CURNA and hold, continue climb-in-hold to 3500.

ATIS 118.8	HARRISBURG APP CON (080°-179°) 126.45 281.525 (180°-329°) 124.1 273.525 (330°-079°) 118.25 269.45	HARRISBURG INTL TOWER 124.8 269.35	GND CON 121.7 348.6
---------------	--	---------------------------------------	------------------------



ELEV 310 **D** TDZE 308

4 NM Holding Pattern ARRUY

3500 ← 308° → 128° →

VGSI and RNAV glidepath not coincident (VGSI Angle 3.00/TCH 75).

GP 3.00° TCH 54

AXAJI

\*2.5 NM to RW13

RW13

6.3 NM 4.1 NM 2.5 NM

CATEGORY	A	B	C	D
LPV DA	558/24 250 (300-1/2)			
LNAV/VNAV DA	1572-5 1264 (1300-5)			
LNAV MDA	1180/24 872 (900-1/2)	1180/40 872 (900-3/4)	1180-2 872 (900-2)	1180-2 1/4 872 (900-2 1/4)
CIRCLING	1180-1 870 (900-1)	1180-1 1/4 870 (900-1 1/4)	1180-2 1/2 870 (900-2 1/2)	1440-3 1130 (1200-3)

TDZ/CL Rwy 13

REIL Rwy 31

HIREL Rwy 13-31