

LOC I-HQA <u>110.9</u>	APP CRS 308°	Rwy Idg 8129 TDZE 308 Apt Elev 310
----------------------------------	------------------------	---

ILS or LOC RWY 31

Circling NA south of Rwy 13-31.

MISSED APPROACH: Climb to 800 then climbing right turn to 3000 on heading 090° and RAV VORTAC R-193 to BAARN INT/LRP 18 DME and hold.

ATIS
118.8

HARRISBURG APP CON

(080°-179°)	126.45	281.525
(180°-329°)	124.1	273.525
(330°-079°)	118.25	269.45


HARRISBURG INTL TOWER

269.35

GND CON

121.7 348.6

Λ 2033

114.6 RAV 
Chan 93

114.6 RAY
Chan 93

Procedure NA for arrival
on LRP VOR/DME airway
radials 223 CW 296.

LOM
ENOL
204 MD

Capital City ➤

IAF
LANCASTER
17.3 LRP :≡::
Chan 120

ALTERNATE
MISSED APCH FIX

ELEV 310	D	TDZE 308
----------	----------	----------

TDZ/CL Rwy 13
REIL Rwy 31
HIRL Rwy 13-31

FAF to MAP 5.6 NM

Knots	60	90	120	150	180
Min:Sec	5:36	3:44	2:48	2:14	1:52

HARRISBURG, PENNSYLVANIA
Amdt 1F 27JAN22

40°12'N-76°46'W

HARRISBURG INTL (MDT)
ILS or LOC RWY 31

NE-4, 10 JUL 2025 to 07 AUG 2025

HARRISBURG, PENNSYLVANIA

AL-188 (FAA)

25219

LOC I-HQA 110.9	APP CRS 308°	Rwy Ldg 8129
	TDZE 308	
	Apt Elev 310	

ILS or LOC RWY 31

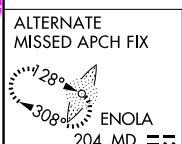
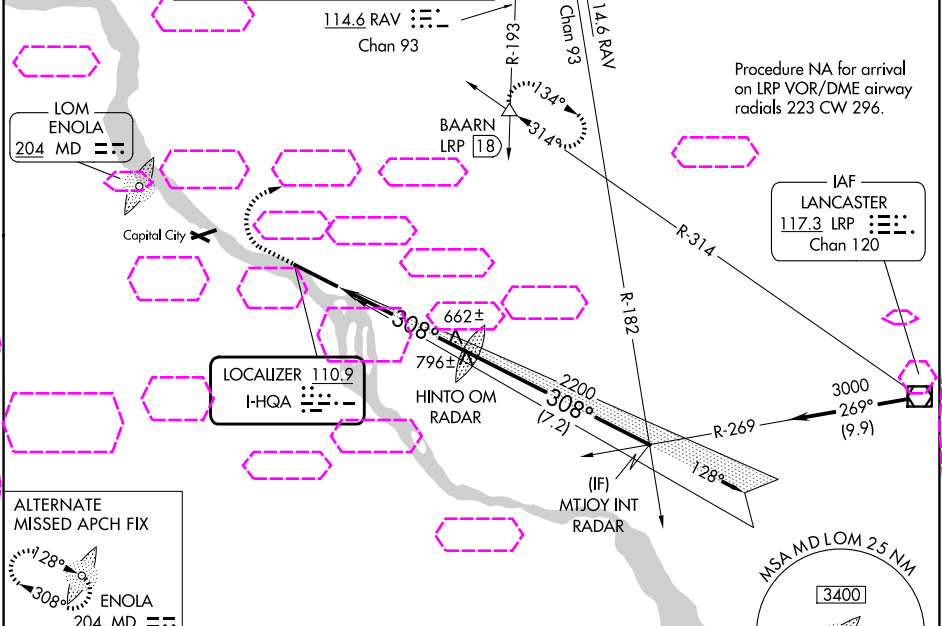
HARRISBURG INTL (MDT)

16°C

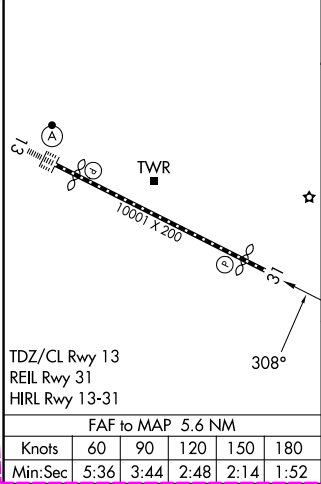
Circling NA south of Rwy 13-31.

MISSED APPROACH: Climb to 800 then climbing right turn to 3000 on heading 090° and RAV VORTAC R-193 to BAARN INT/LRP 18 DME and hold.

ATIS 118.8	HARRISBURG APP CON (080°-179°) 126.45 281.525 (180°-329°) 124.1 273.525 (330°-079°) 118.25 269.45	HARRISBURG INTL TOWER 124.8 269.35	GND CON 121.7 348.6
----------------------	---	--	-------------------------------



ELEV 310	TDZE 308
----------	----------



	800	3000	RAV R-193	BAARN △				
		hdg 090°						
					HINTO OM RADAR 2158		MTJOY INT RADAR	
					308°		3000	
					2200			
					5.6 NM		7.2 NM	
							GS 3.00°	TCH 51
CATEGORY	A	B	C	D				
S-ILS 31		558/50	250 (300-1)					
S-LOC 31	920/50	612 (700-1)	920-1¾ 612 (700-1¾)	920-2 612 (700-2)				
CIRCLING	920-1 610 (700-1)	980-1 670 (700-1)	1000-2 690 (700-2)	1440-3 1130 (1200-3)				

HARRISBURG, PENNSYLVANIA
Amdt 1F 27JAN22

40°12'N-76°46'W

ILS or LOC RWY 31

NE-4, 07 AUG 2025 to 04 SEP 2025

NE-4, 07 AUG 2025 to 04 SEP 2025