

ILS or LOC RWY 13  
HARRISBURG INTL (MDT)

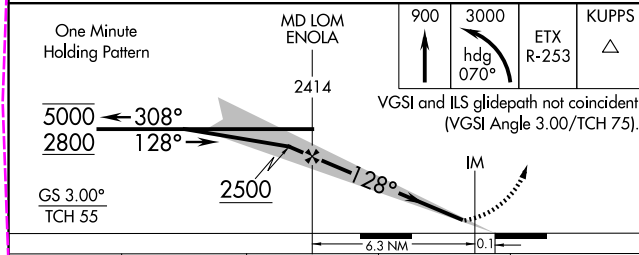
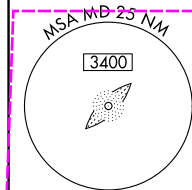
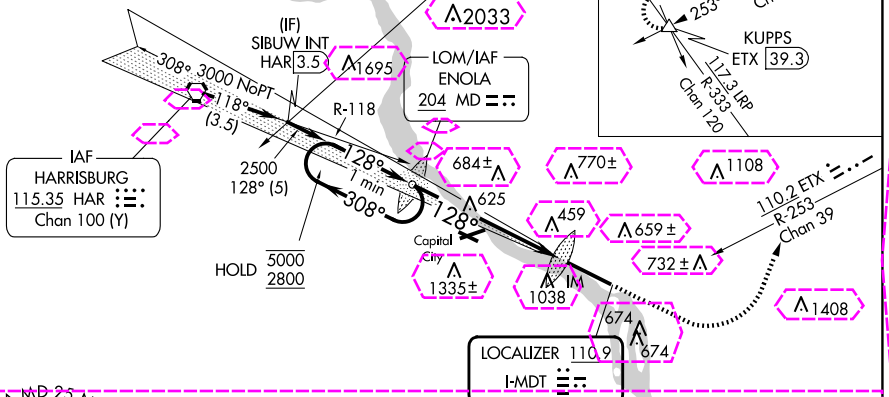
**MISSED APPROACH:** Climb to 900 then climbing left turn to 3000 on heading 070° and on ETX VOR/DME R-253 to KUPPS INT/ETX 39.3 DME and hold.

ATIS <b>118.8</b>		HARRISBURG APP CON		HARRISBURG INTL TOWER		GND CON	
		(080°-179°)	<b>126.45</b>	<b>281.525</b>			
		(180°-329°)	<b>124.1</b>	<b>273.525</b>	<b>124.8 269.35</b>		<b>121.7 348.6</b>
ALTERNATE	HARRISBURG	(330°-079°)	<b>118.25</b>	<b>269.45</b>			

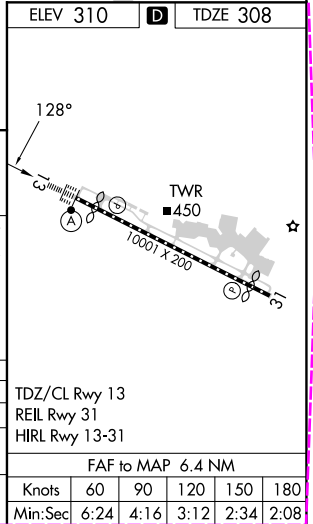
**ALTERNATE**      **HARRISBURG**  
**MISSED**        HAR :≡:  
**APCH FIX**      115.35  
                        Chan 100 (Y)

R-281 → 101° ↻ 281°

Procedure NA for arrival on HAR VORTAC  
airway radials 102 CW 157 and at  
HAR VORTAC on V12 eastbound.








CATEGORY	A	B	C	D
S-ILS 13	508/18		200 (200-½)	
S-LOC 13	900/24	592 (600-½)	900-1¼	592 (600-1¼)
CIRCLING	900-1 590 (600-1)	980-1 670 (700-1)	1000-2 690 (700-2)	1420-3 1110 (1200-3)





LOC I-MDT <b><u>110.9</u></b>	APP CRS <b>128°</b>	Rwy Ldg <b>8070</b> TDZE <b>308</b> Apt Elev <b>310</b>
----------------------------------	------------------------	---

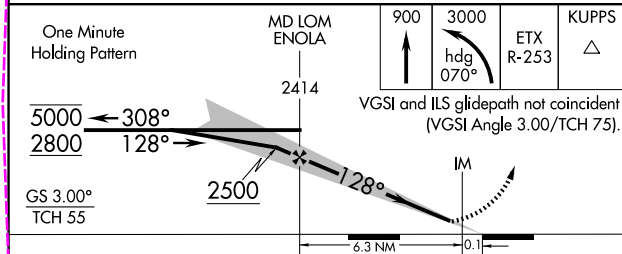
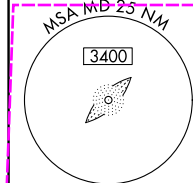
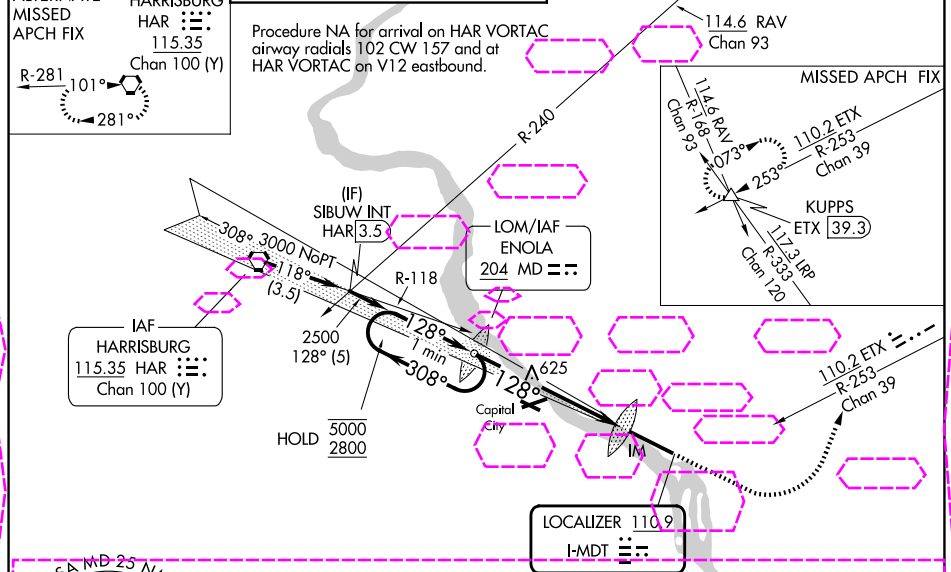
ILS or LOC RWY 13  
HARRISBURG INTL (MDT)

   	Circling NA south of Rwy 13-31.		MISSED APPROACH: Climb to 900 then climbing left turn to 3000 on heading 070° and on ETX VOR/DME R-253 to KUPPS INT/ETX 39.3 DME and hold.
---	---------------------------------	---	--

ATIS <b>118.8</b>		HARRISBURG APP CON (080°-179°) <b>126.45 281.525</b> (180°-329°) <b>124.1 273.525</b>		HARRISBURG INTL TOWER <b>124.8 269.35</b>		GND CON <b>121.7 348.6</b>	
ALTERNATE	HARRISBURG	(330°-079°) <b>118.25 269.45</b>					

ALTERNATE HARRISBURG  
 MISSED HAR   
 APCH FIX 115.35  
 Chan 100 (Y)  


Procedure NA for arrival on HAR VORTAC  
airway radials 102 CW 157 and at  
HAR VORTAC on V12 eastbound.



CATEGORY	A	B	C	D
S-ILS 13	508/18		200 (200-½)	
S-LOC 13	900/24	592 (600-½)	900-1¼	592 (600-1¼)
CIRCLING	900-1 590 (600-1)	980-1 670 (700-1)	1000-2 690 (700-2)	1420-3 1110 (1200-3)

ELEV 310

D

TDZE 308

TDZ/CL Rwy 13  
REIL Rwy 31  
HIRL Rwy 13-31

FAF to MAP 6.4 NM					
Knots	60	90	120	150	180
Min:Sec	6:24	4:16	3:12	2:34	2:08

NE-4, 07 AUG 2025 to 04 SEP 2025

NE-4, 07 AUG 2025 to 04 SEP 2025