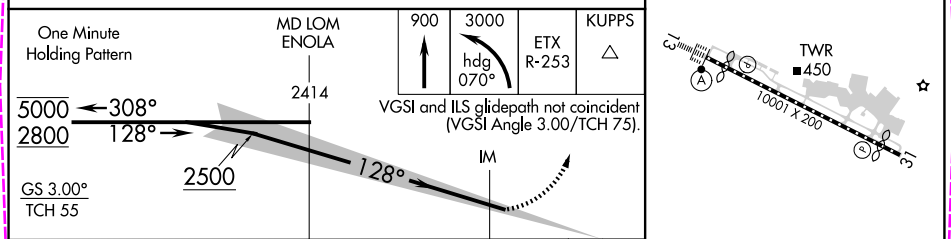
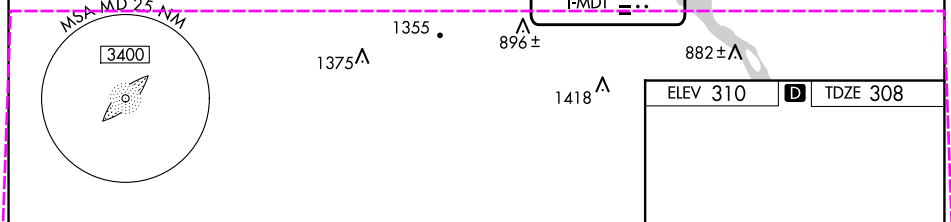


ILS RWY 13 (SA CAT I)
HARRISBURG INTL (MDT)

ATIS 118.8	HARRISBURG APP CON (080°-179°) 126.45 281.525 (180°-329°) 124.1 273.525	HARRISBURG INTL TOWER 124.8 269.35	GND CON 121.7 348.6
ALTERNATE HARRISBURG	(330°-079°) 118.25 269.45		



	A	B	C	D
S-ILS 13	RA 150/14 150 DA 458			

SA CATEGORY I ILS - SPECIAL AIRCREW
& AIRCRAFT CERTIFICATION REQUIRED

TDZ/CL Rwy 13
REIL Rwy 31
HIRL Rwy 13-31

HARRISBURG, PENNSYLVANIA

AL-188 (FAA)

25219

LOC I-MDT 110.9	APP CRS 128°	Rwy Ldg TDZE Apt Elev 8070 308 310
---------------------------	------------------------	--

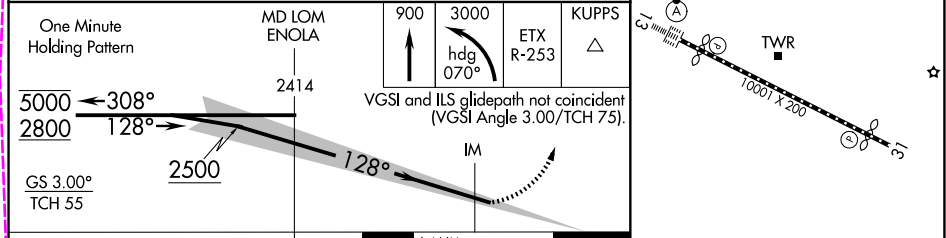
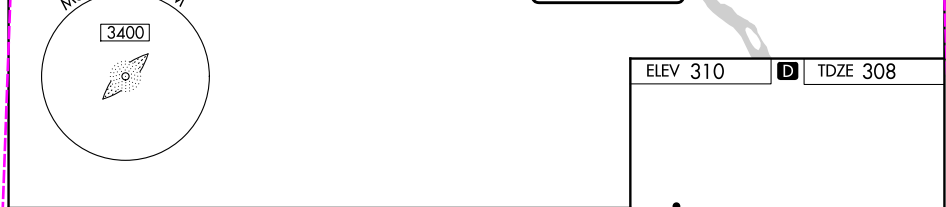
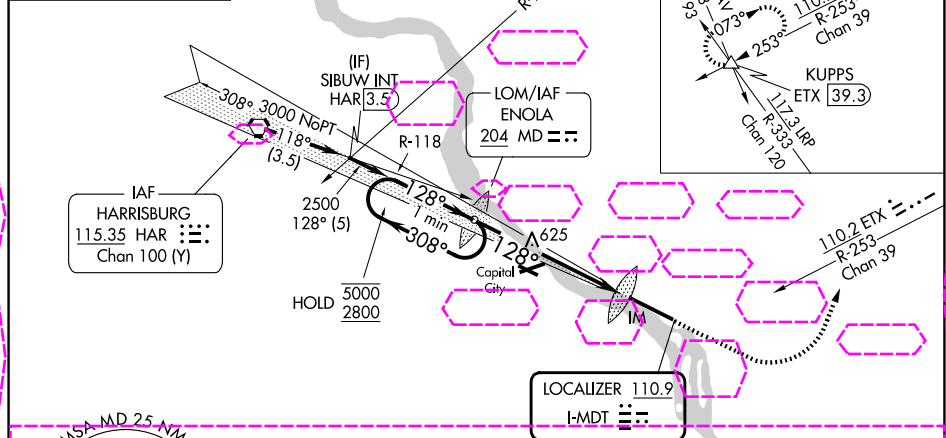
ILS RWY 13 (SA CAT I)

HARRISBURG INTL (MDT)

16°C	Requires specific OPSPEC, MSPEC, or LOA approval.	ALSF-2	MISSED APPROACH: Climb to 900 then climbing left turn to 3000 on heading 070° and on ETX VOR/DME R-253 to KUPPS INT/ETX 39.3 DME and hold.
-------------	---	--------	--

ATIS 118.8	HARRISBURG APP CON (080°-179°) 126.45 281.525 (180°-329°) 124.1 273.525 (330°-079°) 118.25 269.45	HARRISBURG INTL TOWER 124.8 269.35	GND CON 121.7 348.6
----------------------	--	---	--------------------------------------

ALTERNATE MISSED APCH FIX	HARRISBURG HAR 115.35 Chan 100 (Y)	Procedure NA for arrival on HAR VORTAC airway radials 102 CW 157 and at HAR VORTAC on V12 eastbound.
---------------------------	------------------------------------	--



CATEGORY	A	B	C	D
S-ILS 13	RA 150/14	150 DA 458		

SA CATEGORY I ILS - SPECIAL AIRCREW & AIRCRAFT CERTIFICATION REQUIRED

HARRISBURG, PENNSYLVANIA
Amdt 3A 11JUL24

40°12'N-76°46'W

HARRISBURG INTL (MDT)
ILS RWY 13 (SA CAT I)

TDZ/CL Rwy 13
REIL Rwy 31
HIRL Rwy 13-31

NE-4, 07 AUG 2025 to 04 SEP 2025

NE-4, 07 AUG 2025 to 04 SEP 2025