

ILS RWY 13 (CAT II & III)
HARRISBURG INTL (MDT)

TDZ/CL Rwy 13	
REIL Rwy 31	
HIRL Rwy 13-31	

NE-4, 10 JUL 2025 to 07 AUG 2025

HARRISBURG, PENNSYLVANIA

AL-188 (FAA)

25219

LOC I-MDT 110.9	APP CRS 128°	Rwy Ldg TDZE Apt Elev 8070 308 310
---------------------------	------------------------	--

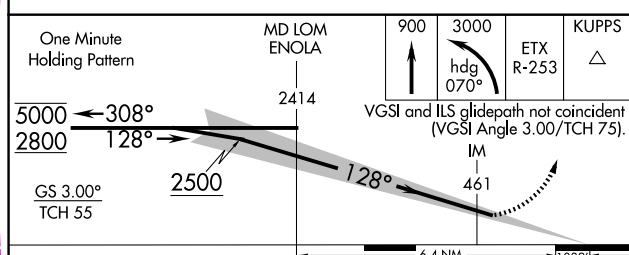
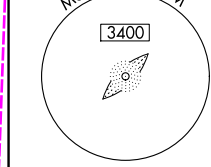
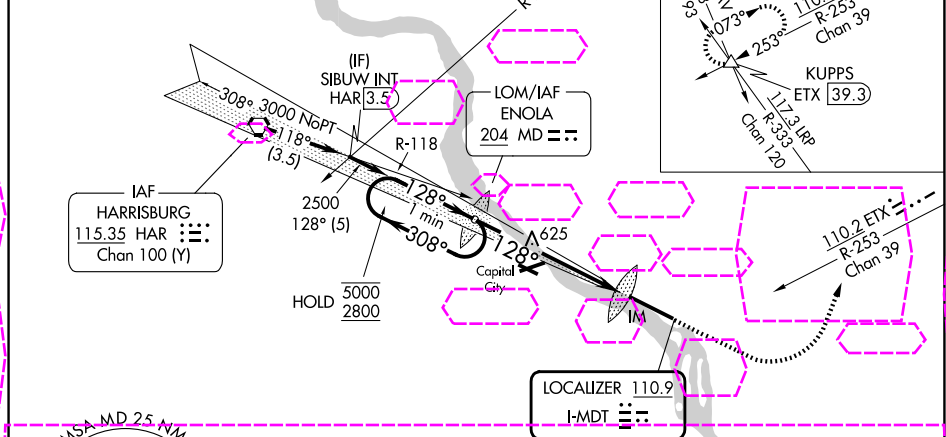
ILS RWY 13 (CAT II & III)

HARRISBURG INTL (MDT)

CAT II: RVR 1000 authorized with specific OPSPEC, MSPEC, or LOA approval and use of autoland or HUD to touchdown.	ALSIF-2 	MISSED APPROACH: Climb to 900 then climbing left turn to 3000 on heading 070° and on ETX VOR/DME R-253 to KUPPS INT/ETX 39.3 DME and hold.
---	-------------	--

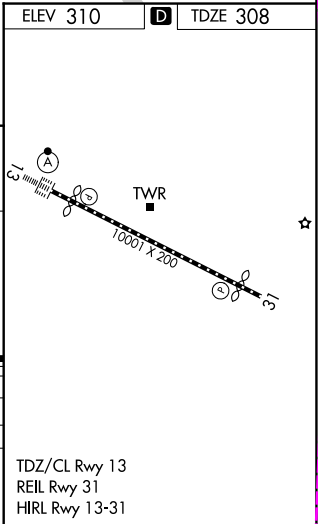
ATIS 118.8	HARRISBURG APP CON (080°-179°) 126.45 281.525 (180°-329°) 124.1 273.525 (330°-079°) 118.25 269.45	HARRISBURG INTL TOWER 124.8 269.35	GND CON 121.7 348.6
----------------------	---	--	-------------------------------

ALTERNATE MISSED APCH FIX R-281 101° 281°	HARRISBURG HAR 115.35 Chan 100 (Y)	Procedure NA for arrival on HAR VORTAC airway radials 102 CW 157 and at HAR VORTAC on V12 eastbound.	114.6 RAV Chan 93
--	------------------------------------	--	-------------------



CATEGORY	A	B	C	D
S-ILS 13	CAT II	RA 100/12	100 DA 408	
S-ILS 13	CAT III	RVR 06		

CATEGORY II & III ILS - SPECIAL AIRCREW & AIRCRAFT CERTIFICATION REQUIRED



HARRISBURG, PENNSYLVANIA
Amdt 3A 11JUL24

40°12'N-76°46'W

HARRISBURG INTL (MDT)
ILS RWY 13 (CAT II & III)

NE-4, 07 AUG 2025 to 04 SEP 2025

NE-4, 07 AUG 2025 to 04 SEP 2025