

HARRISBURG, PENNSYLVANIA

AL-187 (FAA)

24193

WAAS CH 86800 W26A	APP CRS 262°	Rwy Idg TDZE 347 Apt Elev 347
--	------------------------	---

RNAV (GPS) RWY 26

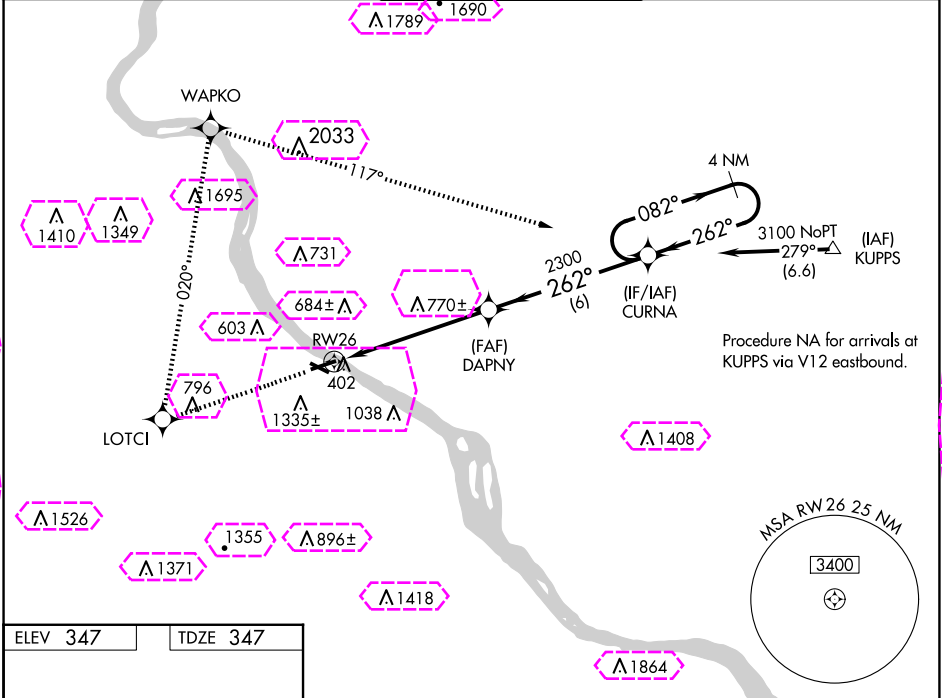
CAPITAL CITY (CXY)

RNP APCH - GPS.

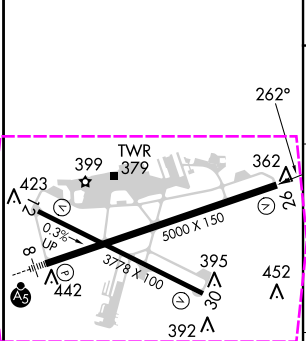
When local altimeter setting not received, use Harrisburg Intl altimeter setting. Circling Rwy 12 NA at night. Rwy 26 helicopter visibility reduction below ¾ SM NA. Circling NA south of Rwy 8-26. VDP NA when using Harrisburg Intl altimeter setting.

MISSED APPROACH: Climb to 3100 direct LOTCI and right turn via 020° track to WAPKO and right turn 117° track to CURNA and hold.

ATIS 134.95	HARRISBURG APP CON 124.1 273.525	CAPITAL CITY TOWER ★ 119.5 (CTAF) 0 257.8	GND CON 121.9	UNICOM 122.95
-----------------------	--	---	-------------------------	-------------------------

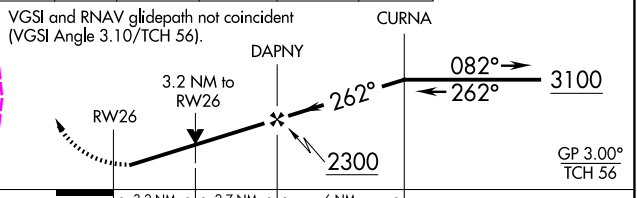


ELEV 347	TDZE 347
-----------------	-----------------



3100 LOTCI	WAPKO	CURNA
tr 020°	tr 117°	

4 NM Holding Pattern



CATEGORY	A	B	C	D
LPV DA	847-1 ³ / ₈	500 (500-1 ³ / ₈)		
LNAV MDA	1460-1 ¹ / ₄ 1113 (1200-1 ¹ / ₄)	1460-1 ¹ / ₂ 1113 (1200-1 ¹ / ₂)	1460-3 1113 (1200-3)	
CIRCLING	1460-1 ¹ / ₄ 1113 (1200-1 ¹ / ₄)	1700-1 ¹ / ₂ 1353 (1400-1 ¹ / ₂)	1700-3 1353 (1400-3)	

HARRISBURG, PENNSYLVANIA
Orig-D 13JUL23

40°13'N-76°51'W

RNAV (GPS) RWY 26

NE-4, 10 JUL 2025 to 07 AUG 2025

NE-4, 10 JUL 2025 to 07 AUG 2025

HARRISBURG, PENNSYLVANIA

AL-187 (FAA)

25219

WAAS CH 86800 W26A	APP CRS 262°	Rwy Ldg TDZE 347 Apt Elev 347
--	------------------------	---

RNAV (GPS) RWY 26

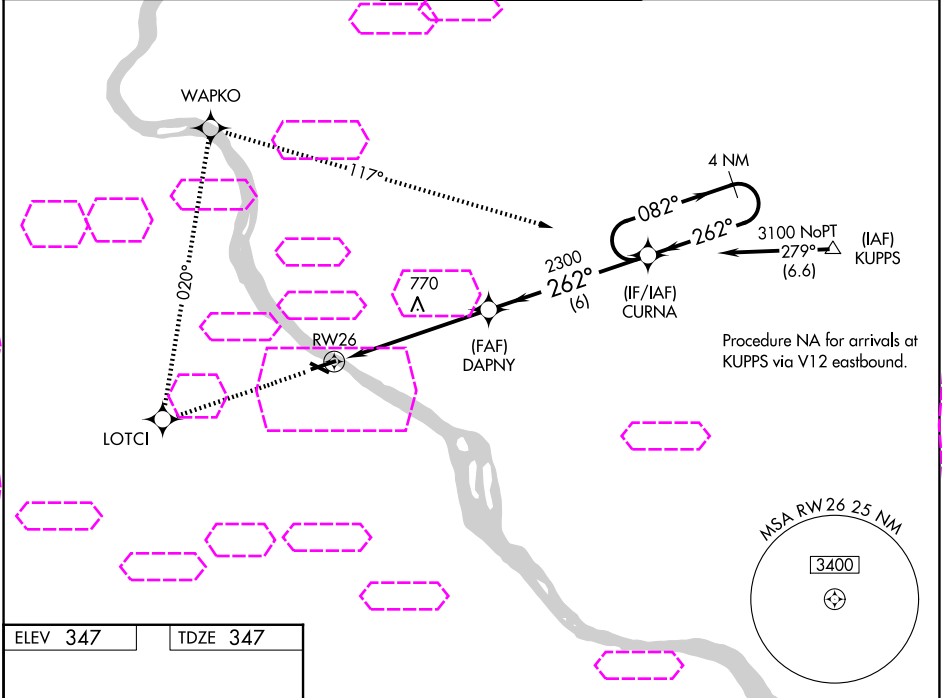
CAPITAL CITY (CXY)

RNP APCH - GPS.

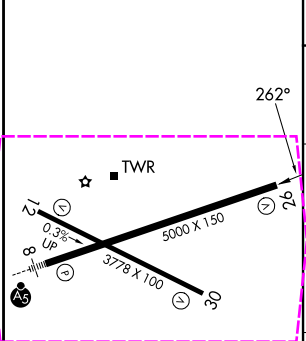
When local altimeter setting not received, use Harrisburg Intl altimeter setting. Circling Rwy 12 NA at night. Rwy 26 helicopter visibility reduction below ¾ SM NA. Circling NA south of Rwy 8-26. VDP NA when using Harrisburg Intl altimeter setting.

MISSED APPROACH: Climb to 3100 direct LOTCI and right turn via 020° track to WAPKO and right turn 117° track to CURNA and hold.

ATIS 134.95	HARRISBURG APP CON 124.1 273.525	CAPITAL CITY TOWER ★ 119.5 (CTAF) 257.8	GND CON 121.9	UNICOM 122.95
-----------------------	--	---	-------------------------	-------------------------



ELEV 347	TDZE 347
-----------------	-----------------



HIRL Rwy 8-26	1
MIRL Rwy 12-30	1

3100	LOTCI	WAPKO	CURNA	4 NM Holding Pattern
↑	✧	tr 020°	tr 117°	
VGSI and RNAV glidepath not coincident (VGSI Angle 3.10/TCH 56).				
DAPNY				
3.2 NM to RWY 26				
RWY 26				
3.2 NM				
2.7 NM				
6 NM				
CURNA				
082° → 3100				
← 262°				
GP 3.00°				
TCH 56				
CATEGORY	A	B	C	D
LPV DA	847-1⅓ ₈ 500 (500-1⅓ ₈)			
LNAV MDA	1460-1¼ 1113 (1200-1¼)	1460-1½ 1113 (1200-1½)	1460-3	1113 (1200-3)
CIRCLING	1460-1¼ 1113 (1200-1¼)	1700-1½ 1353 (1400-1½)	1700-3	1353 (1400-3)

NE-4, 07 AUG 2025 to 04 SEP 2025

NE-4, 07 AUG 2025 to 04 SEP 2025