

RNAV (GPS) RWY 5R  
PIEDMONT TRIAD INTL (GSO)

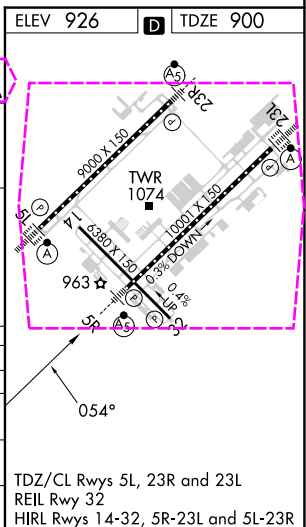
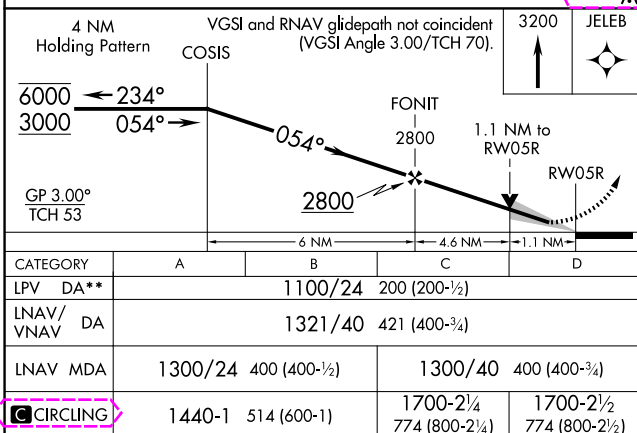
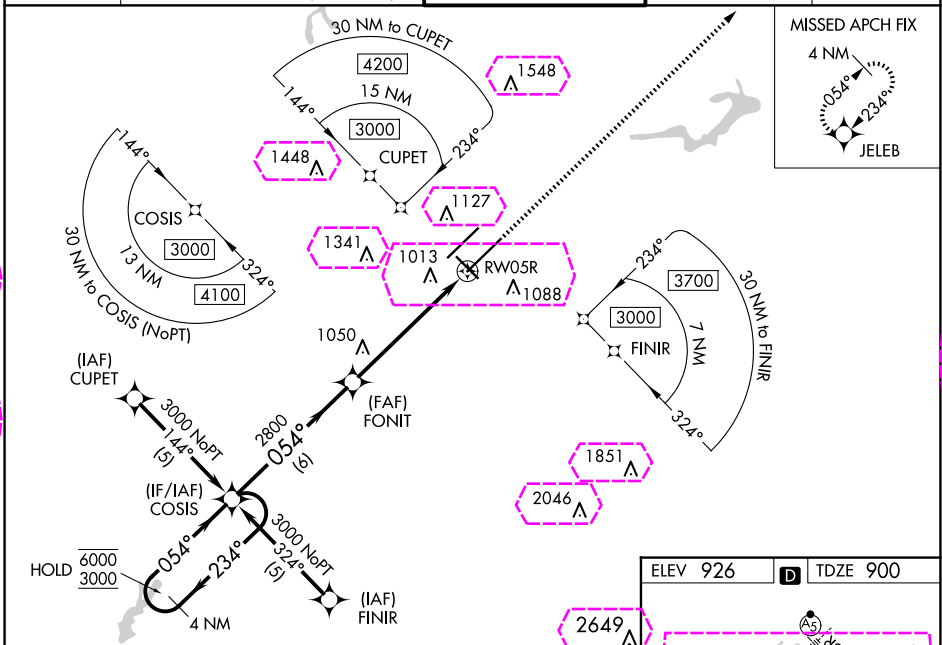
**T** For uncompensated Baro-VNAV systems, LNAV/VNAV NA below -16°C or above 54°C.  
**A** Simultaneous approach authorized. Use of FD or AP required during simultaneous operations. LNAV procedure NA during simultaneous operations. For inop ALS, increase LNAV Cat C/D visibility to RVR 6000.  
 \*\* 1800 RVR authorized with use of FD or AP or HUD to DA.

MALSR

**MISSED APPROACH:**  
Climb to 3200 direct  
JELEB and hold.

D-ATIS	GREENSBORO APP CON		GREENSBORO TOWER		GND CON	CLNC DEL
<b>128.55</b>	<b>124.35</b>	<b>269.225</b> (250°-049°)	<b>119.1</b>	<b>290.325</b>	<b>121.9</b>	<b>348.6</b>
	<b>126.6</b>	<b>327.075</b> (050°-249°)				<b>121.75</b>



WAAS CH <b>53610</b> <b>W05A</b>	APP CRS <b>054°</b>	Rwy Ldg <b>10001</b> TDZE <b>900</b> Apt Elev <b>926</b>
--	------------------------	--

RNAV (GPS) RWY 5R  
PIEDMONT TRIAD INTL (GSO)

RNP APCH-GPS.

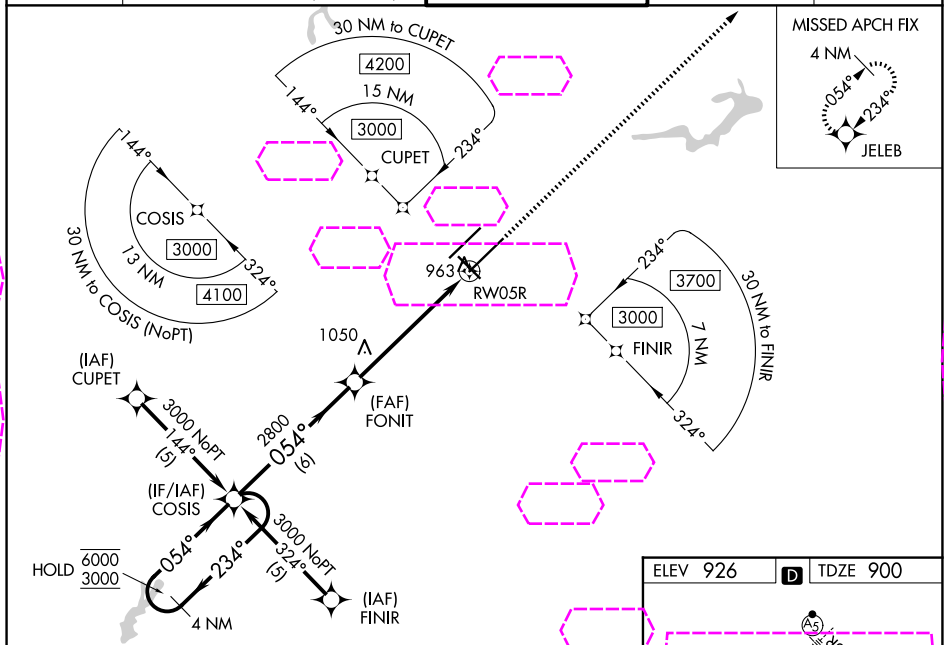
- V** For uncompensated Baro-VNAV systems, LNAV/VNAV NA below -16°C or above 54°C.  
**A** Simultaneous approach authorized. Use of FD or AP required during simultaneous operations. LNAV procedure NA during simultaneous operations. For inop ALS, increase LNAV Cat C/D visibility to RVR 6000.  
 \*\*1800 RVR authorized with use of FD or AP or HUD to DA.

MALSR

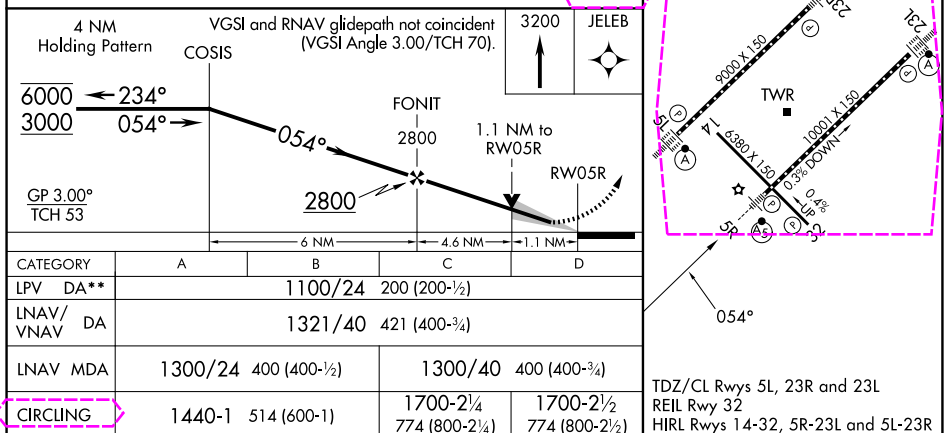
 

**MISSED APPROACH:**  
Climb to 3200 direct  
JELEB and hold.

D-ATIS <b>128.55</b>	GREENSBORO APP CON <b>124.35 269.225</b> (250°-049°) <b>126.6 327.075</b> (050°-249°)	GREENSBORO TOWER <b>119.1 290.325</b>	GND CON <b>121.9 348.6</b>	CLNC DEL <b>121.75</b>
-------------------------	---	--	-------------------------------	---------------------------



SE-2, 07 AUG 2025 to 04 SEP 2025



GREENSBORO, NORTH CAROLINA  
Amdt 2G 22FEB24

36°06'N-79°56'W

PIEDMONT TRIAD INTL (GSO)  
RNAV (GPS) RWY 5R