

GREENSBORO, NORTH CAROLINA

AL-178 (FAA)

24361

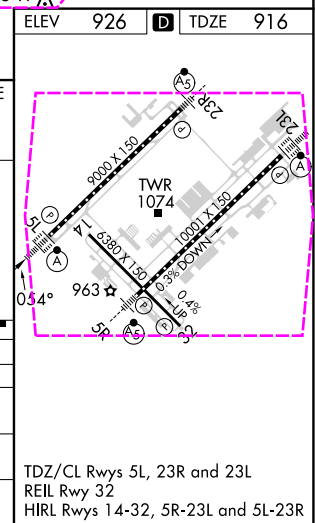
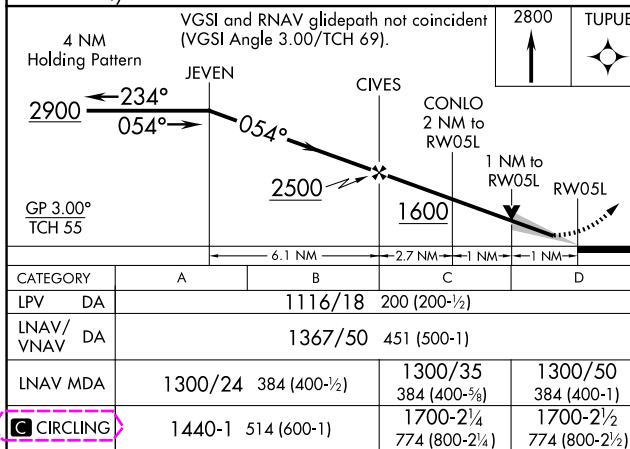
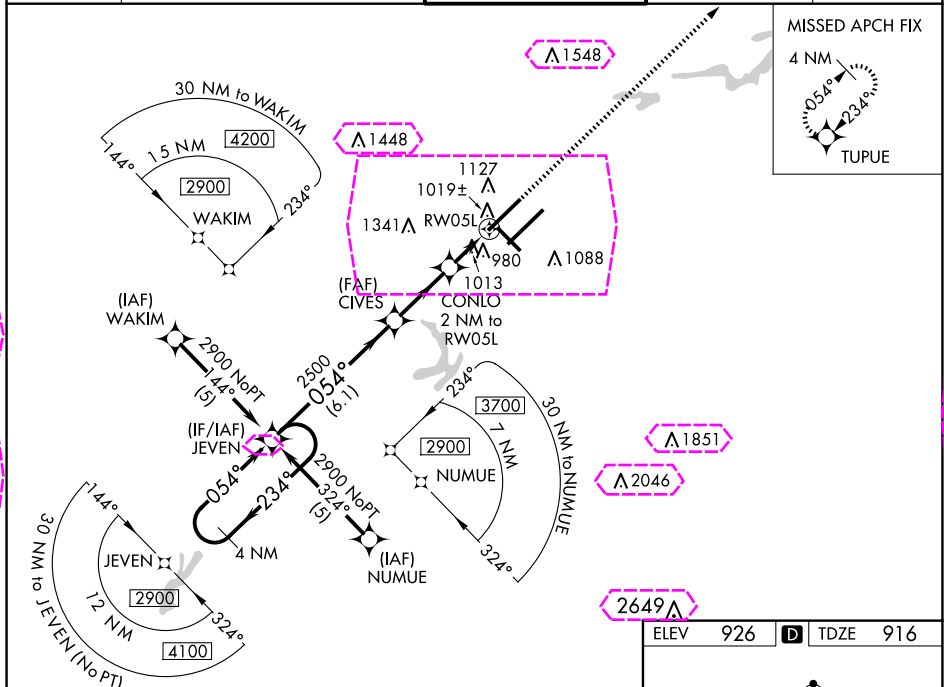
WAAS CH 86515 W05B	APP CRS 054°	Rwy Idg 9000 TDZE 916 Apt Elev 926
--	------------------------	---

RNAV (GPS) RWY 5L

PIEDMONT TRIAD INTL (GSO)

RNP APCH - GPS.		ALSF-2	MISSED APPROACH: Climb to 2800 direct TUPUE and hold.
For inop ALS, increase LNAV Cat D visibility to RVR 6000. For uncompensated Baro-VNAV systems, LNAV/VNAV NA below -16°C or above 47°C. Simultaneous approach authorized with ILS or LOC Rwy 5R, ILS Rwy 5R (CAT II). Use of FD or AP required during simultaneous operations. LNAV procedure NA during simultaneous operations.			

D-ATIS 128.55	GREENSBORO APP CON 124.35 269.225 (250°-049°) 126.6 327.075 (050°-249°)	GREENSBORO TOWER 119.1 290.325	GND CON 121.9 348.6	CLNC DEL 121.75
-------------------------	---	--	-------------------------------	---------------------------



GREENSBORO, NORTH CAROLINA

AL-178 (FAA)

25219

WAAS CH 86515 W05B	APP CRS 054°	Rwy Ldg 9000 TDZE 916 Apt Elev 926
--	------------------------	---

RNAV (GPS) RWY 5L

PIEDMONT TRIAD INTL (GSO)

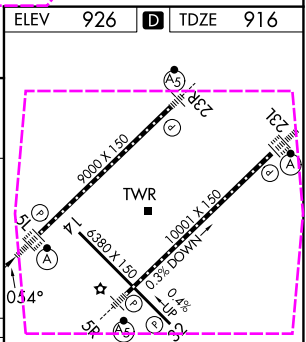
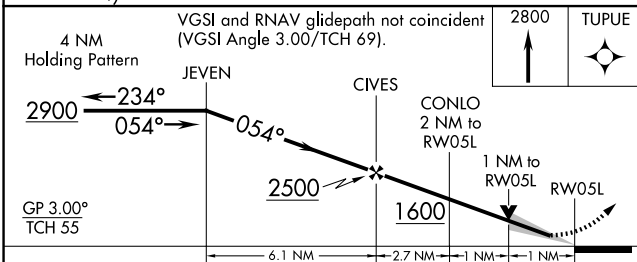
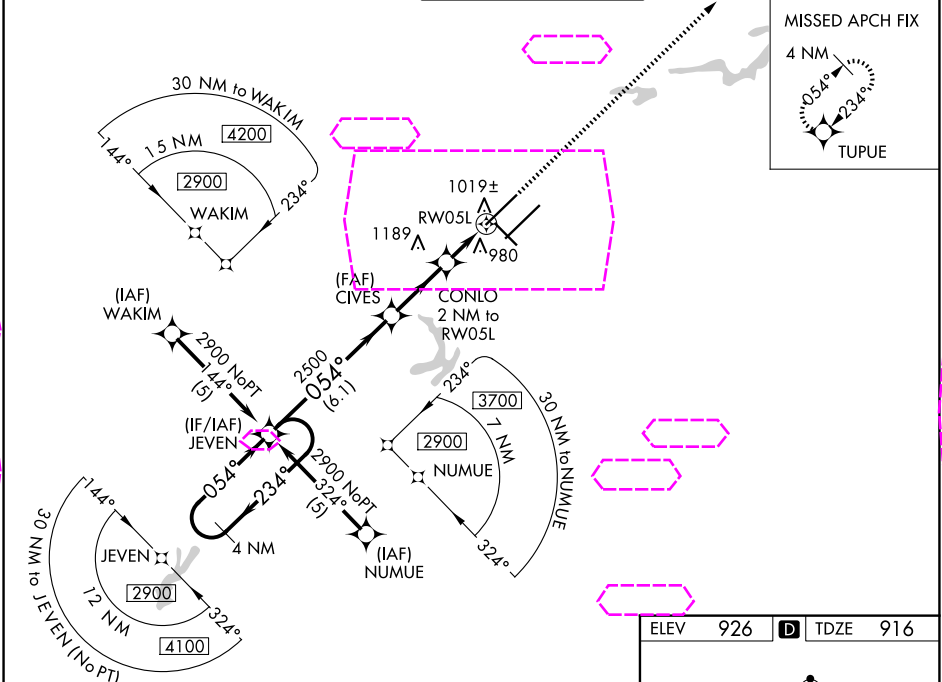
RNP APCH - GPS.

For inop ALS, increase LNAV Cat D visibility to RVR 6000. For uncompensated Baro-VNAV systems, LNAV/VNAV NA below -16°C or above 47°C. Simultaneous approach authorized with ILS or LOC Rwy 5R, ILS Rwy 5R (CAT II). Use of FD or AP required during simultaneous operations. LNAV procedure NA during simultaneous operations.

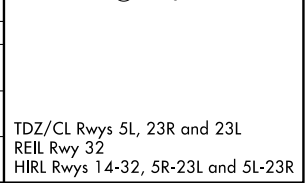
ALSF-2

MISSED APPROACH:
Climb to 2800 direct TUPUE and hold.

D-ATIS 128.55	GREENSBORO APP CON 124.35 269.225 (250°-049°) 126.6 327.075 (050°-249°)	GREENSBORO TOWER 119.1 290.325	GND CON 121.9 348.6	CLNC DEL 121.75
-------------------------	---	--	-------------------------------	---------------------------



CATEGORY	A	B	C	D
LPV DA	1116/18	200 (200-½)		
LNAV/VNAV DA	1367/50	451 (500-1)		
LNAV MDA	1300/24	384 (400-½)	1300/35 384 (400-¾)	1300/50 384 (400-1)
CIRCLING	1440-1	514 (600-1)	1700-2¼ 774 (800-2¼)	1700-2½ 774 (800-2½)



GREENSBORO, NORTH CAROLINA
Orig-E 25JAN24

36°06'N-79°56'W

PIEDMONT TRIAD INTL (GSO)

RNAV (GPS) RWY 5L

SE-2, 07 AUG 2025 to 04 SEP 2025

SE-2, 07 AUG 2025 to 04 SEP 2025