

24361

WAAS CH <b>93919</b> <b>W14A</b>	APP CRS <b>143°</b>	Rwy Idg <b>6380</b> TDZE <b>926</b> Apt Elev <b>926</b>
--	------------------------	---

RNAV (GPS) RWY 14  
PIEDMONT TRIAD INTL (GSO)

	RNP APCH - GPS.
--	-----------------

**T** For uncompensated Baro-VNAV systems, LNAV/VNAV NA below -7°C or  
**A** above 54°C.

**MISSED APPROACH:** Climb to 3700 direct IRKUW and hold, continue climb-in-hold to 3700.

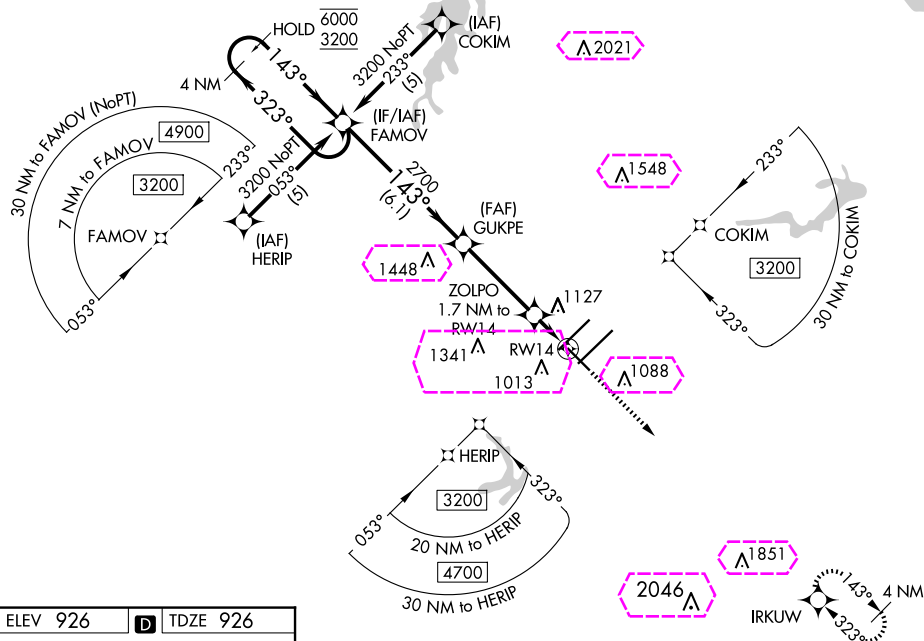
D-ATIS  
**128.55**

GREENSBORO APP CON

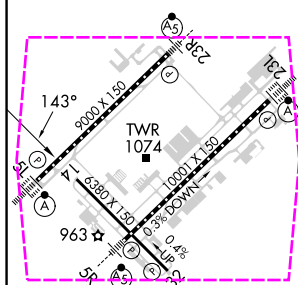
124.35	269.225	(250°-049°)
126.6	327.075	(050°-249°)

GREENSBORO TOWER  
119.1 290.325

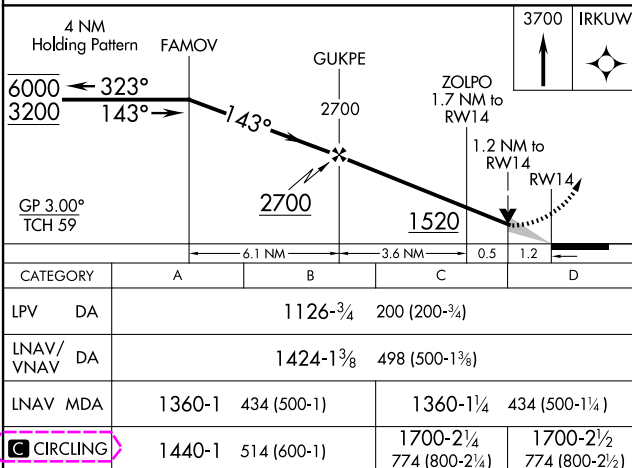
GND CON  
121.9 348.6

CLNC DEL  
**121.75**

ELEV 926		TDZE 926
----------	--	----------



TDZ/CL Rwy 5L, 23R and 23L  
REIL Rwy 32  
HIRL All Rwys



GREENSBORO, NORTH CAROLINA  
Amdt 2B 16MAY24

36°06'N-79°56'W

PIEDMONT TRIAD INTL (GSO)  
RNAV (GPS) RWY 14

GREENSBORO, NORTH CAROLINA

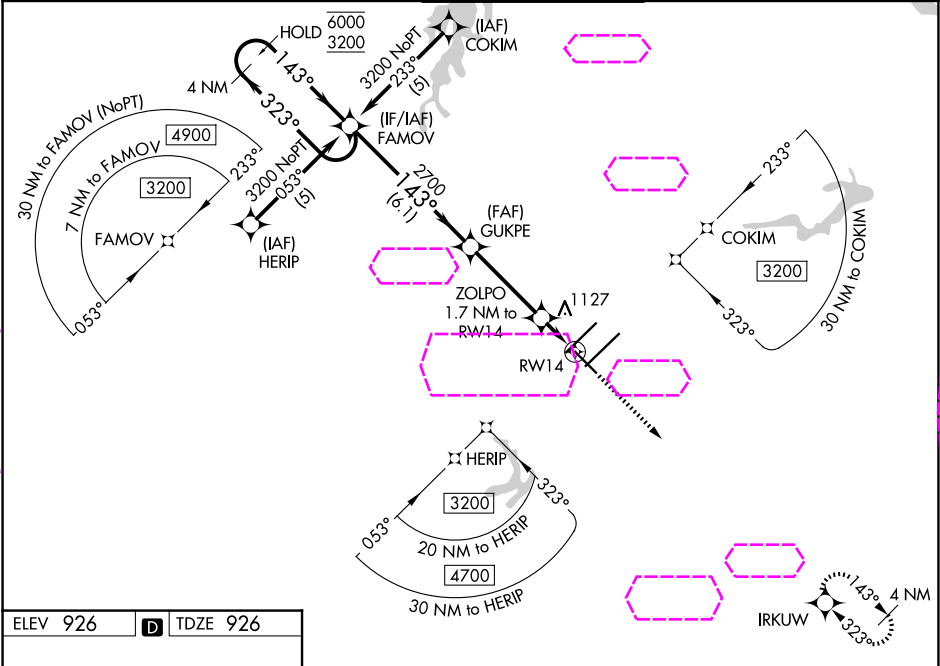
AL-178 (FAA)

25219

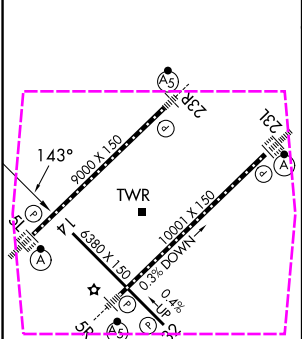
WAAS CH <b>93919</b> <b>W14A</b>	APP CRS <b>143°</b>	Rwy Ldg TDZE Apt Elev	<b>6380</b> <b>926</b> <b>926</b>
--	------------------------	-----------------------------	---

**RNAV (GPS) RWY 14**  
PIEDMONT TRIAD INTL (GSO)

RNP APCH - GPS.		MISSED APPROACH: Climb to 3700 direct IRKUW and hold, continue climb-in-hold to 3700.		
D-ATIS <b>128.55</b>	GREENSBORO APP CON <b>124.35 269.225</b> (250°-049°) <b>126.6 327.075</b> (050°-249°)	GREENSBORO TOWER <b>119.1 290.325</b>	GND CON <b>121.9 348.6</b>	CLNC DEL <b>121.75</b>



ELEV 926	<b>D</b>	TDZE 926
----------	----------	----------



TDZ/CL Rwy 5L, 23R and 23L  
REIL Rwy 32  
HIRL All Rwy

4 NM Holding Pattern FAMOV		3700 IRKUW	
6000 ← 323° 3200 143° →		ZOLPO 1.7 NM to RW14 1.2 NM to RW14 RW14	
GP 3.00° TCH 59		2700 1520	
6.1 NM		3.6 NM	
CATEGORY		A B C D	
LPV DA		1126-3/4 200 (200-3/4)	
LNAV/VNAV DA		1424-1 3/8 498 (500-1 3/8)	
LNAV MDA		1360-1 434 (500-1) 1360-1 434 (500-1 1/4)	
CIRCLING		1700-2 1/4 774 (800-2 1/4) 1700-2 1/2 774 (800-2 1/2)	

GREENSBORO, NORTH CAROLINA  
Amdt 2B 16MAY24

36°06'N-79°56'W

PIEDMONT TRIAD INTL (GSO)  
**RNAV (GPS) RWY 14**

SE-2, 07 AUG 2025 to 04 SEP 2025

SE-2, 07 AUG 2025 to 04 SEP 2025