

LOC/DME I-GFN <b>111.15</b> Chan <b>48</b> (Y)	APP CRS <b>325°</b>	Rwy Idg <b>6380</b> TDZE <b>902</b> Apt Elev <b>926</b>
--	------------------------	---

ILS Z or LOC Z RWY 32  
PIEDMONT TRIAD INTL (GSO)

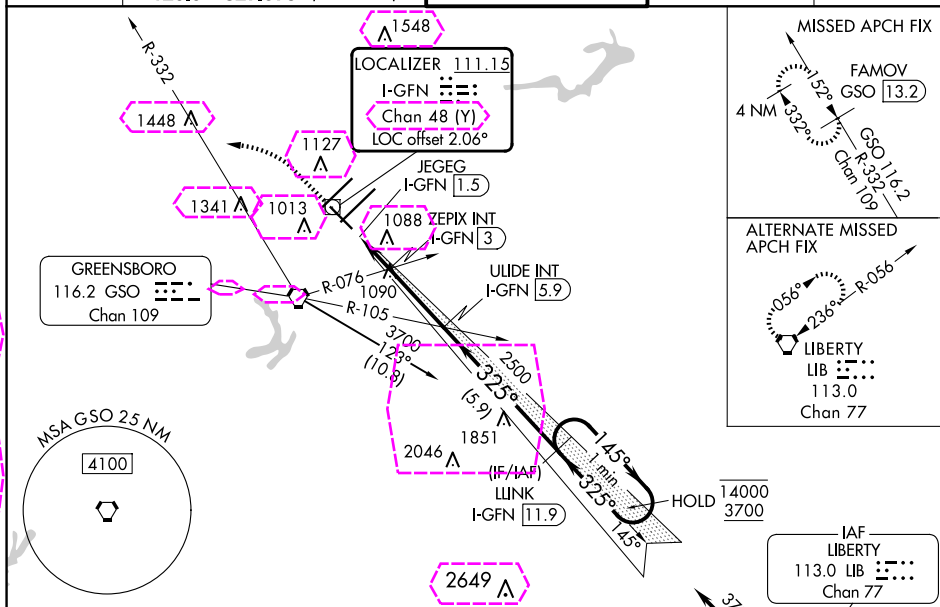
DME required.



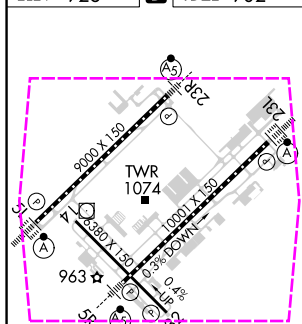
Rwy 32 helicopter visibility reduction below  $\frac{3}{4}$  SM NA.

**MISSED APPROACH:** Climb to 1400 then climbing left turn to 3700 on heading 307° and GSO VORTAC R-332 to FAMOV/GSO 13.2 DME and hold.

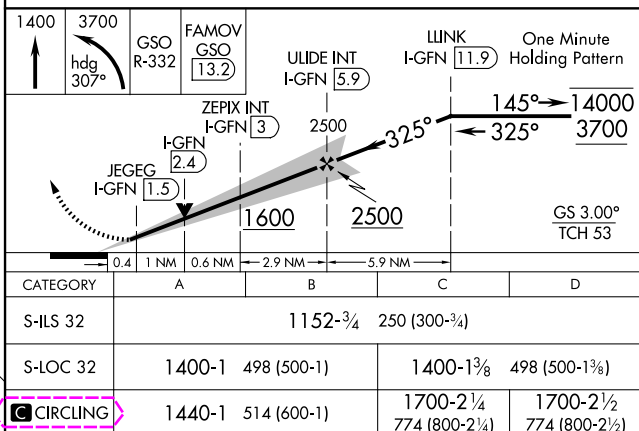
D-ATIS	GREENSBORO APP CON		GREENSBORO TOWER		GND CON	CLNC DEL
<b>128.55</b>	<b>124.35</b>	<b>269.225</b> (250°-049°)	<b>119.1</b>	<b>290.325</b>	<b>121.9</b>	<b>348.6</b>
	<b>126.6</b>	<b>327.075</b> (050°-249°)				<b>121.75</b>



ELEV 926	<b>D</b>	TDZE 902
----------	----------	----------



TDZ/CL Rwy 5L, 23R and 23L  
REIL Rwy 32  
HIRL Rwy 14-32, 5R-23L and 5L-23R



GREENSBORO, NORTH CAROLINA  
Orig-B 18MAY23

36°06'N-79°56'W

PIEDMONT TRIAD INTL (GSO)

ILS Z or LOC Z RWY 32

SE-2, 10 JUL 2025 to 07 AUG 2025

SE-2, 10 JUL 2025 to 07 AUG 2025

LOC/DME I-GFN <b>111.15</b> Chan <b>48</b> (Y)	APP CRS <b>325°</b>	Rwy Ldg <b>6380</b> TDZE <b>902</b> Apt Elev <b>926</b>
--	------------------------	---

ILS Z or LOC Z RWY 32  
PIEDMONT TRIAD INTL (GSO)

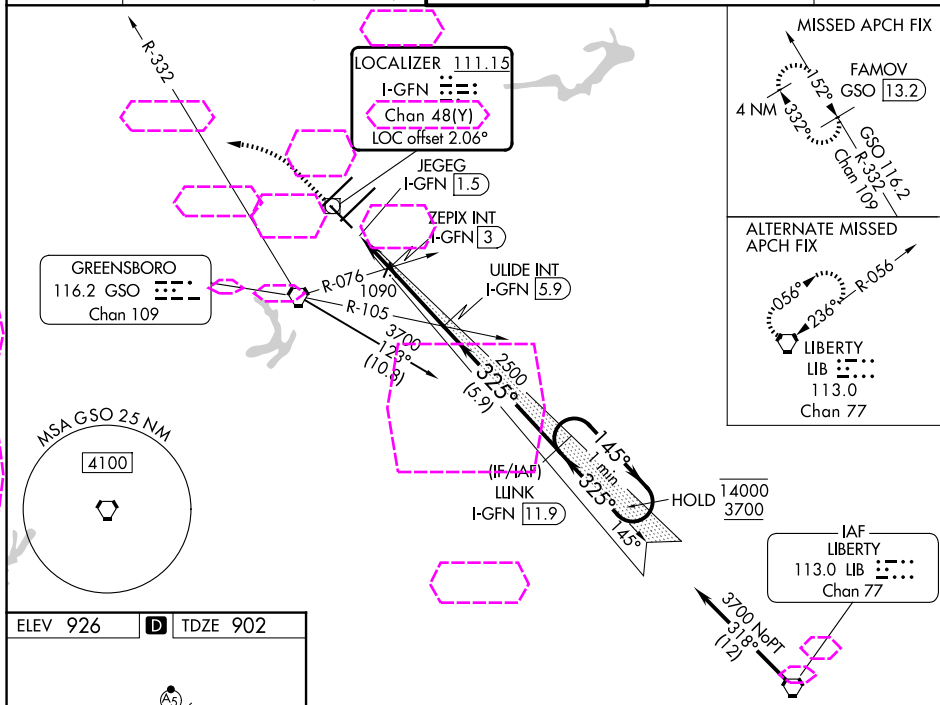
DME required.



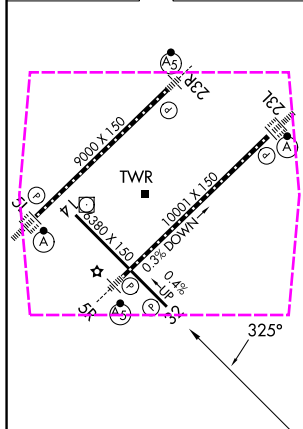
Rwy 32 helicopter visibility reduction below  $\frac{3}{4}$  SM NA.

**MISSED APPROACH:** Climb to 1400 then climbing left turn to 3700 on heading 307° and GSO VORTAC R-332 to FAMOV/GSO 13.2 DME and hold.

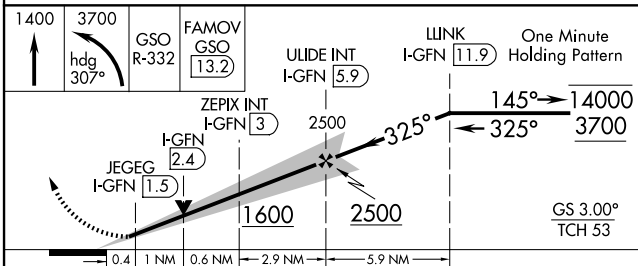
D-ATIS	GREENSBORO APP CON		GREENSBORO TOWER		GND CON	CLNC DEL
<b>128.55</b>	<b>124.35</b>	<b>269.225</b> (250°-049°)	<b>119.1</b>	<b>290.325</b>	<b>121.9</b>	<b>348.6</b>
	<b>126.6</b>	<b>237.075</b> (050°-249°)				<b>121.75</b>



ELEV 926	<b>D</b>	TDZE 902
----------	----------	----------



TDZ/CL Rwy 5L, 23R and 23L  
REIL Rwy 32  
HIRL Rwy 14-32, 5R-23L and 5L-23R



CATEGORY	A	B	C	D
S-ILS 32	1152- <sup>3</sup> / <sub>4</sub> 250 (300- <sup>3</sup> / <sub>4</sub> )			
S-LOC 32	1400-1 498 (500-1)		1400-1 <sup>3</sup> / <sub>8</sub> 498 (500-1 <sup>3</sup> / <sub>8</sub> )	
CIRCLING	1440-1 514 (600-1)		1700-2 <sup>1</sup> / <sub>4</sub> 774 (800-2 <sup>1</sup> / <sub>4</sub> )	1700-2 <sup>1</sup> / <sub>2</sub> 774 (800-2 <sup>1</sup> / <sub>2</sub> )

SE-2, 07 AUG 2025 to 04 SEP 2025

SE-2, 07 AUG 2025 to 04 SEP 2025